



# MASSACHUSETTS LOBSTERMEN'S ASSOCIATION

A LEADING Commercial Fishing Industry Association in New England



JOIN TODAY and  
show your support

AUGUST 2021 NEWSPAPER • WWW.LOBSTERMEN.COM

## Massachusetts allocated \$23 million for additional CARES Act Fisheries Relief

The Consolidated Appropriations Act of 2021 has provided an additional allocation of \$255 million in fisheries assistance funding to support activities previously authorized under Sec. 12005 of the Coronavirus Aid, Relief, and Economic Security Act, also called the CARES Act, to states, Tribes, and territories with coastal and marine fishery participants who have been negatively affected by COVID-19. In this second round of COVID-19 fisheries relief funding, Massachusetts was allocated approximately \$23 million, the third-highest allocation in the country, behind Alaska and Washington.

This funding follows the \$28 million of fisheries relief allocated to Massachusetts by the CARES Act in May 2020. For the first round of relief, "Round 1", DMF ran programs across four sectors (aquaculture, commercial fishing, for-hire fishing, and seafood processing/wholesale dealing) from June to November 2020. On November 10, 2020, with the mailing of payments for the commercial fishing sector, Massachusetts became the first state to completely disburse their allocation of funds under this program. DMF approved a total of 954 applications for funding through the Round 1 CARES Act



Fisheries Relief program.

Although the pandemic's financial impacts vary across sectors and individual businesses, this crisis undoubtedly brought unique challenges to every fishing industry participant in Massachusetts. The Round 1 CARES Act Fisheries Relief was sorely needed by Massachusetts' fish-

ery groups and was regarded by many as a lifeline for their struggling businesses. While data gathered by the MA DMF Statistics Program suggest that some fisheries have been able to recover from the most severe losses seen during the early days of the pandemic, Round 2 of this program will continue to

provide critical financial relief to those facing economic hardships.

The Consolidated Appropriations Act of 2021 provides the same eligibility requirements as those mandated under Round 1. As required by the CARES Act,





SERIOUS ABOUT SAFETY

LRSE.COM | 401-816-5400

590 FISH RD, TIVERTON, RI 02878  
 181 OLD COLONY AVE, UNIT A, BOSTON, MA 02127  
 55 STATE ST, NARRAGANSETT, RI 02882



SALES • SERVICE • TRAINING • RENTAL • OUTFITTING • PICKUP + DELIVERY

**Safety Equipment Servicing**

Life Raft + Survival Equipment has been selling and servicing all major brands of Life Rafts, EPIRBs/PLBs, Life Jackets, Immersion Suits, and Man Overboard Equipment since 1983.

We offer pickup and delivery to over 20 locations throughout the Northeast.

CALL FOR GREAT PRICING.

**North East Safety Training**

NEST, a division of LRSE, offers hands-on Basic, Advanced, and Customized Safety Training Courses, Monthly Drill Conducting, First Aid/CPR/AED Courses and Vessel Inspections.

VISIT OUR WEBSITE TO LEARN MORE.

-  **LIFE RAFTS**
-  **EPIRBs + PLBs**
-  **LIFE JACKETS**
-  **IMMERSION SUITS**
-  **MAN OVERBOARD**
-  **PICKUP + DELIVERY**

**COMMERCIAL LIFE RAFTS**

*Elliot, Zodiac, Crewsaver, Revere, Viking*



**FIBRELIGHT LADDERS**

*Man Overboard Recovery Cradle, Self Recovery Ladder*



**IMMERSION SUITS**

*Imperial*



**EPIRBs**

*ACR V4*



**FIRETKO®**

*Fire Suppression Tool*



**LIFE JACKETS**

*Mustang*



# MLA Sponsors

The following companies are proud supporting MLA members. We encourage our members to patronize them. If your company is not listed and you would like it to be, contact Tracey Abboud at 781-545-6984, ext. 2

## **ALIVE & KICKING LOBSTER**

LOUIS MASTRANGELO  
CAMBRIDGE, MA  
617.876.0451

## **ALUMATECH MARINE**

ANDY COSTA  
PLYMOUTH, MA  
508.746.7774

## **BAR HARBOR LOBSTER**

JEFF HAZELL  
ORLANDO, FL  
407.851.4001

## **BOSTON LOBSTER**

NEIL ZARELLA  
617.464.1500  
bostonlobstercompany.com

## **BOSTON SWORD & TUNA**

STEPHEN SCOLA  
BOSTON, MA  
617.946.9850

## **BROOKS TRAP MILL**

STEPHEN BROOKS  
THOMASTON, ME  
207.354.8763  
stephen@brookstrapmill.com

## **CAPE ANN MARINE**

SALES & SERVICE  
978.283.0806  
CapeAnnMarina.com

## **C-TRAP**

MATT BORGES  
MATTAPOISETT, MA  
508.758.2740

## **CAPE CODDER MARINE, LLC**

BOB DOBIAS  
SWAMPSCOTT, MA  
978.979.1795  
capecodderboats.com

## **CAPE SEAFOODS BAIT DEALER**

GERRY O'NEIL  
GLOUCESTER, MA  
978.479.4642

## **CAPE FISHERMEN SUPPLY**

DAVE LIBBY  
CHATHAM, MA  
508.945.3501

## **CAPE TIP SEAFOODS**

CHRIS KING  
PROVINCETOWN/ORLEANS  
508.487.0259 | 508.225.7221

## **CAPTAIN MARDEN'S SEAFOODS**

KIM MARDEN  
WELLESLEY, MA  
781.329.7007 | 781.329.0792  
captainmardens.com

## **CHERRY ST. FISH MARKET**

DARRYL PARKER  
DANVERS, MA  
978.777.3449

## **CHRIS ELECTRONICS CORP.**

FAIRHAVEN, MA  
508.994.8257

## **COASTAL HYDRAULICS**

RICH TUCKER  
SEABROOK, NH  
603.474.1914  
coastalhyd.com  
sales@coastalhyd.com

## **COHASETT LOBSTER POUND**

TOMMY ALIOTO  
COHASETT, MA  
781.383.1551

## **EAST COAST SEAFOOD**

SPIROS TOURKAKIS  
LYNN, MA  
781.593.1737

## **ELECTRA-DYNE CO INC.**

JUDY MACCAFERRI  
PLYMOUTH, MA  
508.746.3270

## **FARM CREDIT EAST**

MIDDLEBORO, MA  
508.946.4455

## **FISHER AIR FASTENERS**

ED & CHRIS FISHER  
PEMBROKE, MA  
781.826.2522

## **FISHERMEN SERVICES**

DONNA CHEPREN  
781.545.5073  
fishermenservices.com

## **FLEET PROPELLER SERVICE**

MIKE VALM  
FAIRHAVEN, MA  
508.979.8000

## **FRIENDSHIP TRAP CO.**

CHRIS ANDERSON  
FRIENDSHIP, ME  
800.451.1200

## **HAMILTON MARINE INC.**

56 US ROUTE 1 BYPASS  
KITTERY, ME 03904  
207.439.1133  
hamiltonmarine.com

## **HARBOR FUELS**

info@harborfuels.com  
617.720.3835

## **HERCULES**

JOHN REARDON  
NEW BEDFORD, MA  
508.993.0010

## **JAMES HOOK & CO.**

ED HOOK JR.  
BOSTON, MA  
617.423.5500

## **JOHN M. KARBOTT CUSTOM**

WOODEN BOAT  
BUILDING & REPAIR  
PLYMOUTH, MA  
508.224.3709  
by-the-sea.com/  
karbottboatbuilding

## **JOLIN LOBSTER**

MANCHESTER, MA  
978.526.7954

## **KETCHAM TRAPS**

HEATHER KETCHAM  
NEW BEDFORD, MA  
508.997.4787

## **KINGFISHER TRAP**

CARL HOWARD  
DENNIS, MA  
508.385.5968

## **KING LOBSTERS**

D.J. KING  
BRANFORD, CT  
203.488.6926

## **KING MARINE LLC**

CAPT. GEORRDIE KING  
MARINE SURVEYOR  
207.337.8706  
kinggeordie@comcast.net

## **LOBSTER CRUISES**

PAUL QUINTAL  
PLYMOUTH, MA  
508.746.5342

## **LOBSTER TRAP FISH MARKET**

MONUMET BEACH, MA  
508.759.6400  
lobstertrap.com

## **LOBSTER TRAP CO.**

LOGAN CLARK  
BOURNE, MA  
508.759.4928  
lobstertrap.com

## **LYNCH LOBSTER CO.**

JOHN LYNCH  
BEVERLY, MA  
978.921.8088

## **MAIN STREET WIRE**

PETER CHRISTIAN  
DOUGLAS, MA  
508.847.8888

## **MARINE HYDRAULIC ENGINEERING**

ROBERT CROWE  
ROCKLAND, ME  
207.594.9525 | 800.747.7550

## **MILTON CAT POWER SYSTEMS**

KEVIN HAMPSON  
MILFORD, MA  
508.207.8542

## **MORTILLARO LOBSTER, INC.**

VINCE MORTILLARO  
GLOUCESTER, MA  
798.281.0959

## **NAHANT FISH & LOBSTER**

781.592.7500

## **NAVROC MARINE ELECTRONICS**

JASON PHILBROOK  
ROCKLAND, ME  
207.596.7803

## **N.E. MARINE & INDUSTRIAL INC.**

MIKE RICHARDSON (NH)  
603.436.2836 | 781.834.9301  
Info@newenglandmarine.com

## **NEW ENGLAND PROPELLER**

RON PECK  
PLYMOUTH, MA  
800.635.9504  
neprop@aol.com

## **NORTH ATLANTIC POWER-TWIN DISC**

SAM PROFIO  
EXETER, NH  
sprofio@glpower.com |  
603.418.0470

## **PIGEON COVE COOP**

ROBERT MORRIS  
978.479.3828

## **RFP LOBSTER BAIT**

DICK PERENTZ  
774.248.0292

## **RIVERDALE MILLS**

NORTHBRIDGE, MA  
508.234.8715

## **ROWAND FISHERIES**

DANA ROWAND  
BEVERLY, MA  
978.927.1871

## **ROSES MARINE**

MARTY BOLCOMBE  
GLOUCESTER, MA  
877.283.3334  
rosesmarine.com

## **SEA CLIFF LOBSTER**

FRANK COLLINS  
MANOMET, MA  
508.224.5700

## **SPURS MARINE MFG.**

PABLO SOSA  
FORT LAUDERDALE, FL  
800.824.5372

## **SUPERIOR LOBSTER**

MARSHFIELD-SANDWICH  
774.773.5048  
www.superiorlobster.com

## **THE NEW RESULT**

LOUIS LARSEN  
Mvseafood@vineyard.net

## **TWO COUSINS FISH MARKET**

BRIAN O'DONOHUE  
FREEPORT, NY  
516.379.5065

## **WELLFLEET SHELLFISH CO.**

ALEX HAY  
508.255.5300  
sales@wellfleetshell.com

## **WINDWARD POWER SYSTEMS**

JIM & NATE TYNAN  
FAIRHAVEN, MA  
774.992.0059  
windwardpower.com

## **WOOD'S SEAFOOD**

JAY KIMBALL  
PLYMOUTH, MA  
508.746.0261  
www.woodsseafood.com

## **YANKEE FISHERMEN'S CO-OP.**

SEABROOK, NH  
603.474.9850



**IN MEMORIAM**



*Patrick J. Bowes, Sr.*

1944-2021

It is with heavy heart we must tell you, lifelong MLA member Patrick J. Bowes Sr. USMC Veteran, Scituate Firefighter, Fisherman Patrick Joseph Bowes, Sr. of Scituate and Marshfield, formerly of South Boston, passed away on Friday, July 2, 2021 after a stroke.

Patrick was married for 50 years to the love of his life and college sweetheart, Constance (Connie) Ward Bowes. Connie passed away in July of 2018. Patrick was the proud father of Katie (Bowes) Prendergast and husband Tom of Marshfield and Patrick, Jr. (Jen) of Hull.

He served in the U.S.M.C. during Vietnam. He attended Boston State College where he earned degrees in English, History, Economics and Secondary Education. While at Boston State he was a talented hockey player and

was co-captain of the team. Patrick was a Boston Harbor Fisherman for over 40 years and in past years fished off of Scituate, MA.

Pat learned most of what he knew about lobstering through Paul Vuilleumier. Pat was proud to have built his own beautiful 46 ft. fiberglass lobster boat F/V Katie Pat, in which he fished up until 5 years ago. Patrick was proud to have been a Scituate Firefighter for 21 years. The comradery he had with the other firefighters was something he always treasured.

In lieu of flowers, donations to honor Pat may be made to Massachusetts Lobsterman's Assoc. Scholarship Fund (<https://lobstermen.com/dues-donate>) or to the Scituate Firefighters Scholarship Fund, 800 CJC Hwy., Scituate, MA 02066.

*May you sail upon calm seas with fare winds Captain.*



**THE Specialists**  
FROM BUOY TO TRAP

*Built the Best, Built to Last,  
Built Your Way.*

**PROVEN PERFORMERS!**  
**Rockbottom Runners**



Our precision formulation and process has been refined over the years to provide the optimum balance of strength and flexibility... – and the wise test shows it

Over **20 YEARS** of fishing;

Well over **HALF A MILLION** sold



*Could you do this with any other concrete runner?*

**Lite Load**  
SOLID STEEL CORE  
- TOUGH POLYMER COATING



Over **6 YEARS** of fishing.

Over a **QUARTER MILLION** sold

**GORILLA WOOD RUNNERS**

OCEAN-TESTED for years... aircraft carrier decking and pilings in the marine borer intense Panama Canal Zone.



*The toughest species of junglewood we've found ... and the only kind we sell.*

**We are constantly listening to our customers:  
Your feedback + continuous improvement  
= proven reliability**

**Here to serve you!**

**Jerry Wadsworth** (207) 542-0842 [jerryw@friendshiptrap.com](mailto:jerryw@friendshiptrap.com)  
**Jimmy Emerson** (207) 483-6555 [jemerson@friendshiptrap.com](mailto:jemerson@friendshiptrap.com)  
**Mike Wadsworth** (207) 542-0841 [mikew@friendshiptrap.com](mailto:mikew@friendshiptrap.com)

**Friendship Office:** (800) 451-1200; (207) 354-2545  
**Columbia Falls Office:** (800) 339-6558

Visit our website: [www.friendshiptrap.com](http://www.friendshiptrap.com)







# HAMILTON MARINE BOATERS' STORE!™

Our inventory is a unique mix of traditional and the latest in marine technology, representing a wide range of top marine manufacturers. We're the one-stop destination for all things boating and beyond. We supply boatbuilders, sailors, pleasure boaters and commercial fishermen with products to build and outfit their boats!

*Save The Date:* **AUGUST 26-28, 2021**

**COMMERCIAL FISHERMEN  
APPRECIATION DAYS!**

*In store and by phone!*

**DOOR PRIZES!  
STOREWIDE SALE!**

**GIVEAWAYS!**



Hauling  
Supplies



Gear



Electronics



Safety



Rope



Anchoring



Rubrail



Trailing



Electrical



Steering



Paint



Fasteners

800-639-2715

HAMILTONMARINE.COM



**KITTERY  
PORTLAND  
ROCKLAND  
SEARSPORT  
SW HARBOR  
JONESPORT**

Photos by Wayne Hamilton ©





*Service Provider for MLA Non-Profit Boat Protection Cooperative Ltd.*

**MLA's #1 Commercial Boating Insurance Provider**

**Agreed Hull Value – Protection & Indemnity**

**Crew Coverage - Extended Policy Limits - Chartering**

**Marina Floaters - Multiple Fisheries - Deductibles**

**Call now for a free quote 781-545-5073**

**or**

**Request a quote online at [fishermenservices.com](http://fishermenservices.com)**





**The Massachusetts Lobstermen's Association** would like to welcome the following new members to the Association. Your Association will continue its efforts on your behalf to conserve the resource, protect your livelihood, keep you informed, promote the industry and provide you with increasing benefits as they are developed. MLA stands ready to help you in anyway, at anytime — just let us know how!  
Safe on the water and good fishing!

**NEW MLA MEMBERS:**

**WILLIAM BRIGGS**

F/V: November Gale • Port: Point Judith, RI

**PATRICK DUCKWORTH**

F/V: Reaper • Port: Point Judith, RI

**FRANK DUGGAN**

F/V: OuterLimits3 • Port: Quincy

**JOSEPH DUGGAN**

Port: Plymouth

**GEORGE GANSON**

Port: Portsmouth, NH

**JOHN G. MCGRADE**

F/V: MF Demeanor

Port: Hampton Harbor, NH

**JOHN OSMERS**

F/V: Grayhaven • Port: Menemsha

**OLIVIA STOHR**

F/V: Olivia Page • Port: Nauset

**PAUL THOMAS**

F/V: New Wave • Port: Hull



Published by the Massachusetts Lobstermen's Association, Inc. 8 Otis Place, Scituate, MA 02066

– Published monthly –

Mailed to all paid members of the Massachusetts Lobstermen's Association

**Newsletter Departments**

Editor, Industry News, Notice Section, Editorial, Blog, Industry News, Promotions, Layout, Advertising: Beth Casoni — Executive Director

Buy Sell Swap: Tracey Abboud

**Newsletter Advertising Rates**

The MLA Newsletter is published monthly (Please note that all pre-paid ads for last year will be honored)

\$35 — ¼ Page Ad

\$65 — ½ Page Ad

\$95 — Full Page Ad

Color Ads — + \$25 per ad

# As the HAULER TURNS



Finally, the summer is in full swing here in Massachusetts and crates of lobsters are coming across the docks landing in consumers' pots. We are also happy to report that the demand is high and the prices are holding steady for your lobsters. There is nothing more gratifying to pass along this great news to the media when they call the MLA office and unfortunately, the good news never makes the paper?! Go figure.....

While you, the commercial fishermen in the Commonwealth are hard at work, please remember there are a plethora of important matters you must pay attention to and some of them are time sensitive. These matters do not take a day off nor do they ever stop.

The first one is the CARE'S ACT 2.0 which has several deadlines to qualify. The MADMF recently has mailed out a qualification determination letter to the commercial fishing industry outlining whether you may qualify or not. **PLEASE DO NOT FORGET TO CHECK YOUR MAIL.**

The MADMF is holding several workshops to help commercial fishermen with the application at the following locations:

**8/11: Cape Cod Commercial Fisherman's Alliance**  
1566 Main Street  
Chatham, MA  
1PM – 7PM

**8/12: Massachusetts Lobstermen's Association**  
8 Otis Place  
Scituate, MA  
1PM – 7PM

**8/17: DMF New Bedford Office**  
836 S Rodney French Blvd.  
New Bedford, MA  
1PM – 7 PM

**8/18: DMF Gloucester Office**  
30 Emerson Ave.  
Gloucester, MA  
1 PM – 7 PM

PLEASE remember that ALL applications must be returned to DMF and post-marked by August 28, 2021 and the MADMF will complete the appeals review process by September 17, 2021.

Also another important matter still in the works is the right whale lawsuit in the Boston federal court. On August 19th the Judge will be asking both sides a series of questions on their Finding of Facts and the Ruling of Law documents they submitted in late July.

The Judge will be asking a series of clarifying questions on these documents submitted by both parties to better comprehend the legitimacy of their arguments. On this date the Judge could ultimately make a ruling on the suit, either way; good, bad, or indifferent. The MLA is following this matter closely and will keep you posted once we know more.



If you have not yet signed up to receive MLA Member email directly from me, please do so by sending an email to [beth.casoni@lobstermen.com](mailto:beth.casoni@lobstermen.com) directly. These are not the MLA weekly emails that go out to the general public, they are specifically for MLA members

The MLA is monitoring several other issues up and down the coast that will impact several commercial fishermen should these initiatives be realized. From mosquito spraying to the loss of a Designated Port Area, the MLA is standing by to help you whenever possible. All you have to do is call 781-545-6984 xt. 1. Please remember, we are in this together all the way, good, bad, and indifferent.

Safe on the water,

*Beth Casoni*

Executive Director





# The Commonwealth of Massachusetts

## Division of Marine Fisheries

251 Causeway Street, Suite 400, Boston, MA 02114  
 p: (617) 626-1520 | f: (617) 626-1509  
[www.mass.gov/marinefisheries](http://www.mass.gov/marinefisheries)



CHARLES D. BAKER  
Governor

KARYN E. POLITO  
Lt. Governor

KATHLEEN A. THEOHARIDES  
Secretary

RONALD S. AMIDON  
Commissioner

DANIEL J. MCKIERNAN  
Director

June 30, 2021

Fixed Gear Fishermen of Massachusetts,

*MarineFisheries* will be conducting its annual fall trawl survey throughout state coastal waters beginning September 7, 2021. Surveys have been conducted each May and September since 1978 to provide a consistent sampling of benthic fishes and mobile invertebrates. Survey data is used to monitor the condition of fish stocks, as well as to inform the environmental review process that minimizes construction impacts on fisheries resources. Maintaining access to the planned sampling sites is critical to the integrity of the survey.

Please review the attached table of station locations and the accompanying figures which plot the sample sites. Station location information can also be accessed on our website (<http://www.mass.gov/eea/agencies/dfg/dmf/programs-and-projects/resource-assessment-surveysproject.html>). **We kindly ask for your cooperation and insist that all fixed gear be kept clear of station locations (1.5 n. mi. diameter circle as shown in figure - center point reported in table) for the indicated periods until station completion.** While we will make every attempt to complete stations during the assigned period to minimize inconvenience to fixed gear fishermen, *MarineFisheries* is prepared to attach restrictions to permit renewals (under 322 CMR 7.01 (7)), mandating that fixed gear not be set on designated trawl survey sites for the announced dates. It remains our hope that this action will be unnecessary.

A daily updated list of completed survey stations will be posted on the *MarineFisheries* website and on Twitter (handle: @MassDMF). The Massachusetts Lobstermen's Association will also post survey information on their webpage (<http://www.lobstermen.com>), as well as on Facebook (username: lobstermensassoc) and Twitter (handle: @masslobstermens).

In the event of a delay due to weather, the schedule will be resumed as soon as working conditions permit. Fishermen can contact the R/V *Gloria Michelle* on VHF channels 13 or 16 to determine the updated daily schedule.

Personnel aboard the NOAA R/V *Gloria Michelle*, a 65' western rigged steel stern trawler with a blue hull and white deckhouse, will carefully check each site for marked gear by cruising along a selected tow path before the net is set. Twenty-minute tows undertaken at 2.5 knots cover approximately 0.8 nautical miles. We encourage communicating helpful information to the R/V officers (via channels 13 or 16).

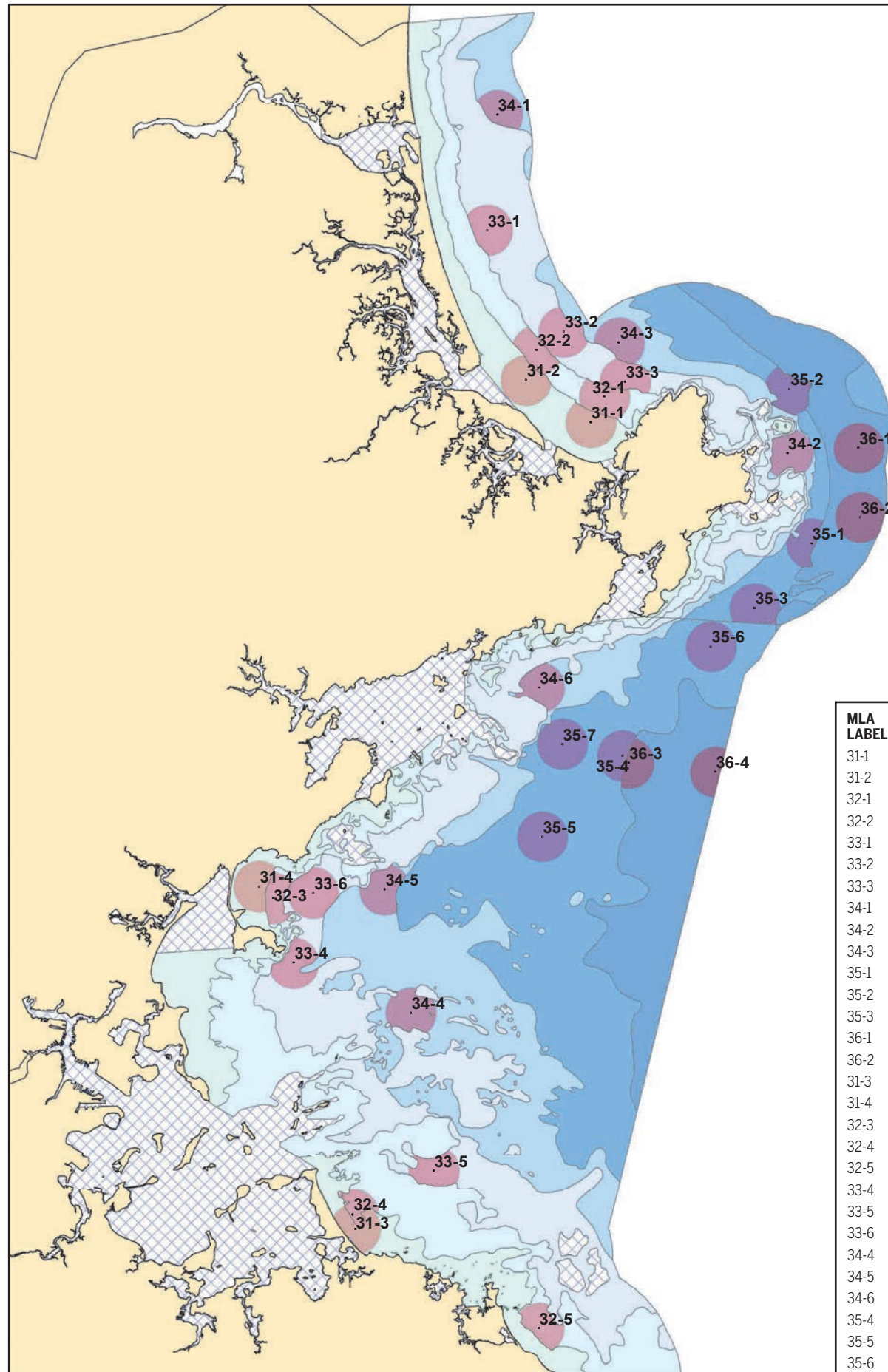
Your cooperation is greatly appreciated and is vital to the effective monitoring of marine resources in the Commonwealth. If you have any questions about the survey, please contact me ([matt.camisa@mass.gov](mailto:matt.camisa@mass.gov), (508) 742-9743). **If you have any questions about the *MarineFisheries* website, Facebook, or Twitter, please contact Story Reed ([story.reed@mass.gov](mailto:story.reed@mass.gov), 617- 626-1524).**

Sincerely,

Matt Camisa  
Senior Marine Fisheries Biologist

Cc. Dan McKiernan, Director





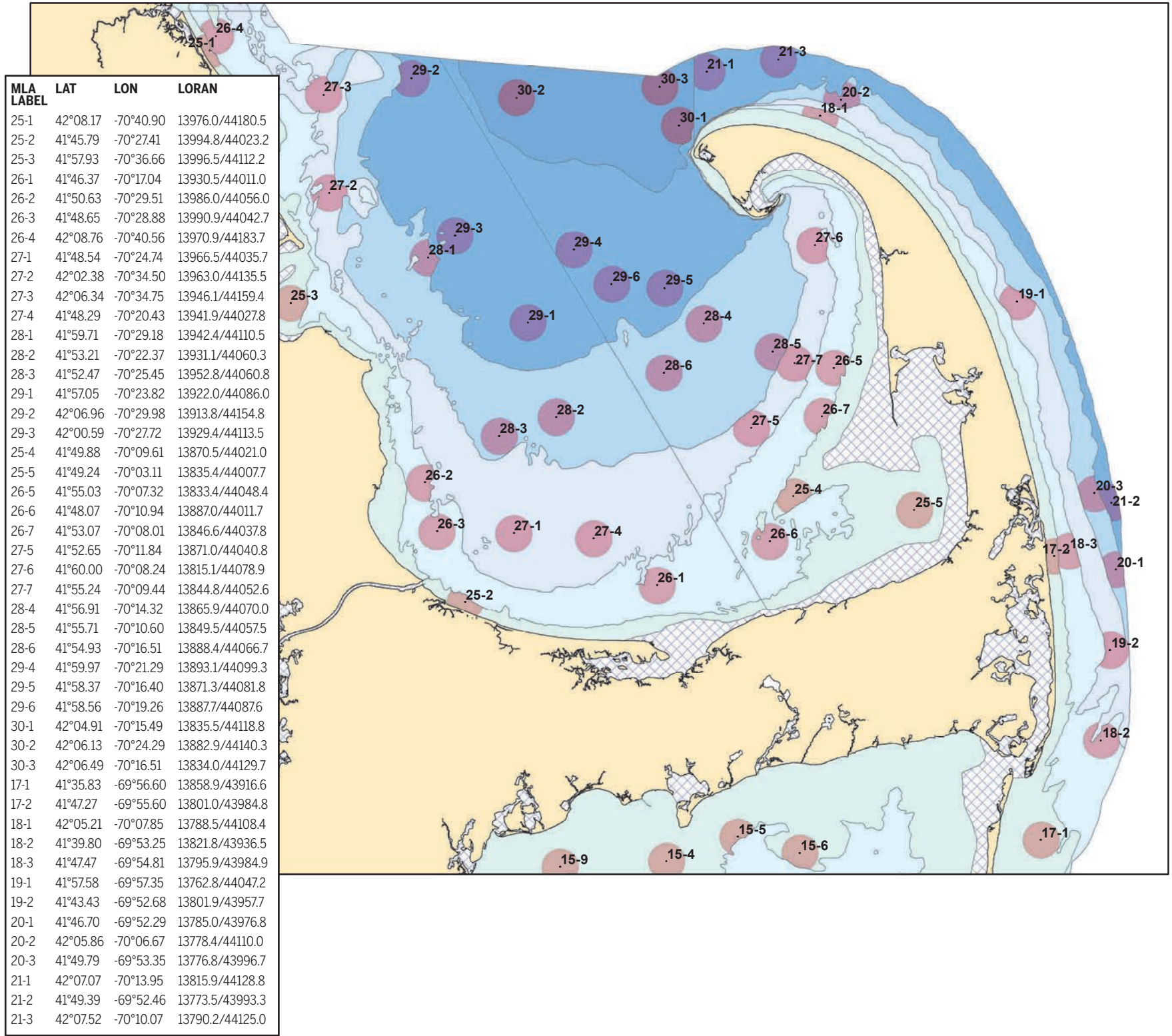
## Massachusetts Marine Fisheries Fall 2021 Planned Tow Locations Massachusetts Bay to New Hampshire

MLA LABEL	LAT	LON	LORAN
31-1	42°40.52	-70°41.82	13818.5/44364.3
31-2	42°41.77	-70°44.39	13828.3/44357.7
32-1	42°41.26	-70°41.27	13811.0/44367.0
32-2	42°42.64	-70°43.94	13821.1/44379.5
33-1	42°46.18	-70°45.89	13814.5/44401.7
33-2	42°43.18	-70°42.86	13811.1/44380.4
33-3	42°41.69	-70°40.44	13803.4/44367.6
34-1	42°49.58	-70°45.43	13793.0/44418.3
34-2	42°39.54	-70°33.99	13773.6/44344.2
34-3	42°42.84	-70°40.66	13798.6/44374.3
35-1	42°36.87	-70°33.08	13781.7/44328.0
35-2	42°41.42	-70°33.89	13762.9/44354.0
35-3	42°34.99	-70°35.38	13806.5/44322.0
36-1	42°39.67	-70°31.16	13754.8/44339.7
36-2	42°37.63	-70°31.13	13765.0/44328.8
31-3	42°16.84	-70°51.44	14000.8/44250.4
31-4	42°26.94	-70°55.16	13975.4/44315.3
32-3	42°26.59	-70°54.61	13973.7/44312.3
32-4	42°17.28	-70°51.53	13999.0/44253.1
32-5	42°13.88	-70°44.22	13969.0/44219.9
33-4	42°24.68	-70°53.80	13977.6/44299.5
33-5	42°18.54	-70°48.32	13972.7/44254.7
33-6	42°26.74	-70°53.01	13962.8/44309.9
34-4	42°23.19	-70°49.17	13955.0/44282.8
34-5	42°26.82	-70°50.17	13943.5/44304.9
34-6	42°32.72	-70°43.97	13873.3/44325.6
35-4	42°30.70	-70°40.69	13862.8/44308.7
35-5	42°28.33	-70°43.90	13895.4/44301.5
35-6	42°33.88	-70°37.13	13823.6/44319.3
35-7	42°31.05	-70°43.07	13876.0/44315.0
36-3	42°30.49	-70°40.44	13862.4/44307.0
36-4	42°30.19	-70°37.01	13842.2/44299.0





## Massachusetts Marine Fisheries Fall 2021 Planned Tow Locations Cape Cod Bay and East of Cape Cod







MARINE • FISHING GEAR • SAFETY  
44 South Street, New Bedford, MA 02740

**DSPA 5 M**

OUR NEWEST FIRE PROTECTION

[www.Hercules-SLR-US.com](http://www.Hercules-SLR-US.com)

[JohnReardon@Hercules-SLR-US.com](mailto:JohnReardon@Hercules-SLR-US.com)

USCG Safety Inspection Station #327

**Commercial Fishing-Marine  
Safety-Rigging**

- ❖ Marine Hardware
- ❖ Cotesi - Netting, Leaded/Sink Rope
- ❖ Stormline & Climate Technical-Foul Weather Gear
- ❖ Buoys & Floats
- ❖ Lobster Bands
- ❖ PFD's, Vests, Float Coats
- ❖ Fish Totes
- ❖ Insulated Tubs
- ❖ Cordage & Twine
- ❖ Mooring Equipment
- ❖ Boarding Ladders
- ❖ Leadline
- ❖ Wire Rope - FC Galv, IWRC, Dyform
- ❖ HiFlyers 12', 14' & 15' XHD
- ❖ Golf & Batting Cage Netting



Inflatable PFD's



**Life Raft Sales**

- ❖ Revere
- ❖ Elliot
- ❖ Survitec
- ❖ Switlik

All brands accepted for service



Fenders & Buoys-All Colors



Boots from Honeywell Safety



ACR Electronics  
Sales & Service  
for your E.P.I.R.B.



Imperial Survival Suits  
Inspections & Safety Drills

Polysteel Rope- Esterpro  
Sinking, Hydropro

Call our USCG Certified Drill Conductor  
Ted Williams 508-264-5779

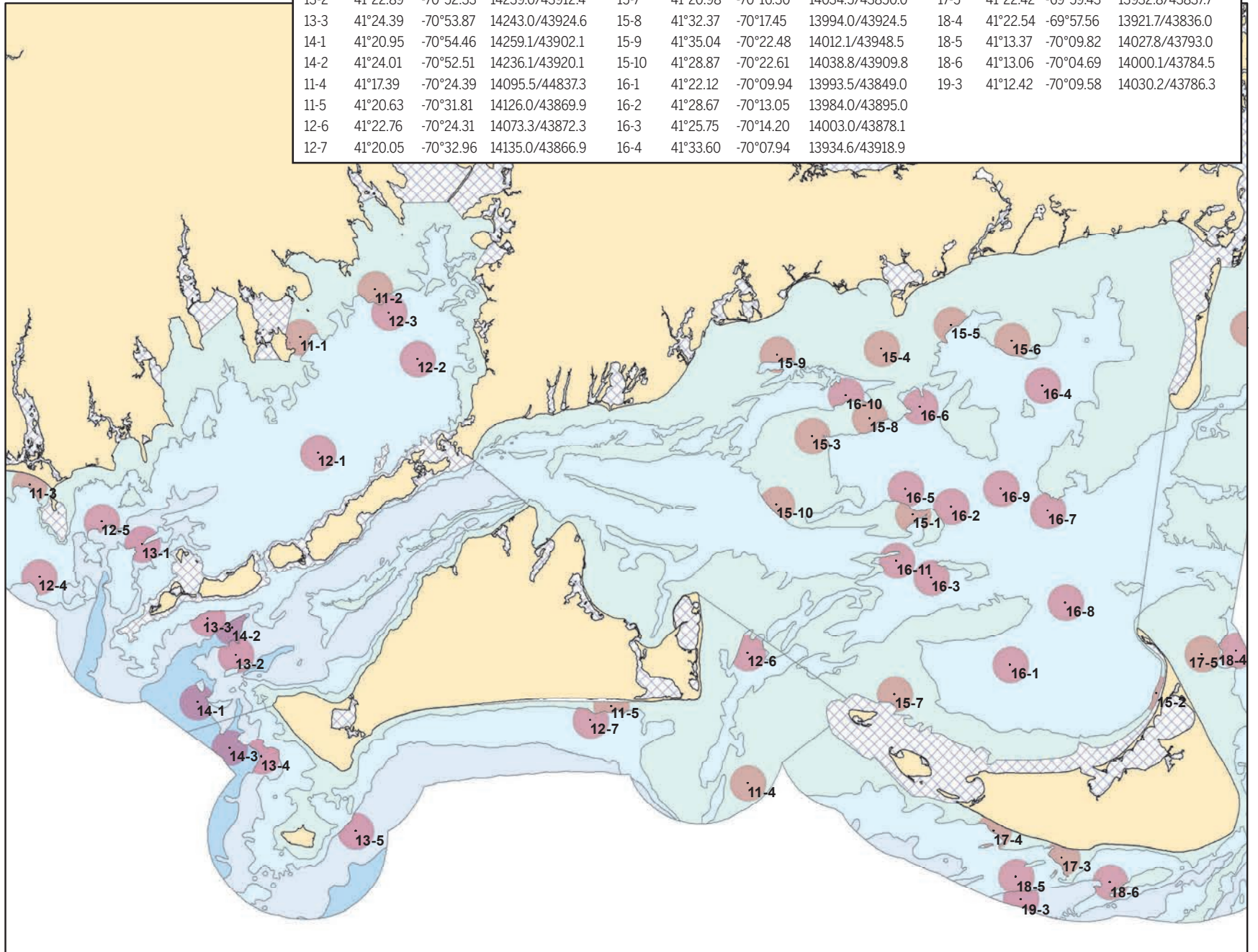
"PULL THE PIN AND THROW IT IN"

44 South Street, New Bedford, MA 02740  
Phone: 508-993-0010 Fax: 508-993-9005  
**Securing - Lifting - Rigging**  
82 MacArthur Dr. New Bedford, MA 02740  
Phone: 508-992-9519 Fax: 508-992-9419



## Massachusetts Marine Fisheries Fall 2021 Planned Tow Locations South of Cape Cod

MLA LABEL	LAT	LOX	L-ORAN	MLA LABEL	LAT	LOX	LORAN	MLA LABEL	LAT	LOX	LORAN
11-1	41°35.96	-70°48.66	14165.1/44395.5	13-4	41°18.69	-70°50.97	14247.0/43882.0	16-5	41°29.43	-70°15.54	13995.1/43903.2
11-2	41°37.92	-70°44.54	14131.9/44399.7	13-5	41°15.58	-70°45.85	14228.5/43853.7	16-6	41°32.81	-70°14.68	13976.0/43923.4
11-3	41°29.96	-71°03.58	13280.9/44976.5	14-3	41°19.06	-70°52.71	14256.2/43887.0	16-7	41°28.45	-70°07.76	13954.5/43886.5
12-1	41°31.19	-70°47.73	14178.8/43960.9	15-1	41°28.37	-70°15.16	13997.3/43886.0	16-8	41°24.64	-70°06.87	13965.0/43861.5
12-2	41°35.04	-70°42.23	14130.0/43977.6	15-2	41°20.84	-70°01.95	13953.3/43831.0	16-9	41°29.39	-70°10.30	13965.0/43896.0
12-3	41°36.95	-70°43.78	14131.2/43992.2	15-3	41°31.67	-70°20.62	14015.5/43924.8	16-10	41°33.32	-70°18.74	13997.5/43932.4
12-4	41°26.15	-71°03.07	14292.3/43950.2	15-4	41°35.22	-70°16.74	13977.7/43941.4	16-11	41°26.48	-70°16.08	14011.0/43885.4
12-5	41°28.42	-70°59.64	14262.5/43960.4	15-5	41°36.16	-70°12.90	13951.3/43941.8	17-3	41°14.12	-70°07.29	14010.4/43794.5
13-1	41°27.49	-70°57.41	14252.8/43950.8	15-6	41°35.47	-70°09.57	13934.8/43932.7	17-4	41°15.27	-70°11.00	14027.4/43806.5
13-2	41°22.89	-70°52.33	14239.0/43912.4	15-7	41°20.98	-70°16.30	14034.5/43850.0	17-5	41°22.42	-69°59.43	13932.8/43837.7
13-3	41°24.39	-70°53.87	14243.0/43924.6	15-8	41°32.37	-70°17.45	13994.0/43924.5	18-4	41°22.54	-69°57.56	13921.7/43836.0
14-1	41°20.95	-70°54.46	14259.1/43902.1	15-9	41°35.04	-70°22.48	14012.1/43948.5	18-5	41°13.37	-70°09.82	14027.8/43793.0
14-2	41°24.01	-70°52.51	14236.1/43920.1	15-10	41°28.87	-70°22.61	14038.8/43909.8	18-6	41°13.06	-70°04.69	14000.1/43784.5
11-4	41°17.39	-70°24.39	14095.5/44837.3	16-1	41°22.12	-70°09.94	13993.5/43849.0	19-3	41°12.42	-70°09.58	14030.2/43786.3
11-5	41°20.63	-70°31.81	14126.0/43869.9	16-2	41°28.67	-70°13.05	13984.0/43895.0				
12-6	41°22.76	-70°24.31	14073.3/43872.3	16-3	41°25.75	-70°14.20	14003.0/43878.1				
12-7	41°20.05	-70°32.96	14135.0/43866.9	16-4	41°33.60	-70°07.94	13934.6/43918.9				





Your vessel is on **FIRE!** You only have seconds....  
**“PULL THE PIN AND THROW IT IN”**

**Wall mount steel bracket\***

**AEROSOL FIRE SUPPRESSION TOOL**  
**NON-TOXIC • UP TO 5,300CU.FT.OF COVERAGE • 15YR. SHELF LIFE**

**Waterproof storage case (MILSPEC)\***

**REMOVES UP TO 1,000°F**  
**IN 60 SECONDS OR LESS!**

Innovation in Fire Suppression Since 2012 • www.flameguardusa.com • tollfree 855-377-2100 email sales@flameguardusa.com  
 X-Tinguish® is a trademark of Flame Guard USA, LLC Copyright ©2021 Flame Guard USA, LLC All Rights Reserved  
 \* Special order

## 15 YEAR SHELF-LIFE • 5-YEAR BATTERY

**NON-TOXIC-NON-CORROSIVE-NON-CONDUCTIVE**  
**NO OZONE DEPLETION POTENTIAL (ODP) • NO GLOBAL WARMING POTENTIAL (GWP)**  
**WORKS TO -65°F (-54°C) • NON-PRESSURIZED • DOES NOT REDUCE OXYGEN (O<sub>2</sub>)**



### OTHER FEATURES

- Extraordinary knock down & suppression
- Can eliminate flashover and backdraft
- NOT pressurized!
- 5-year battery life
- LED light turns red when the unit is activated

1000 Butterfield Road • Suite 1029  
 Vernon Hills, IL USA 60061  
 Url: <https://www.flameguardusa.com>

Email: [sales@flameguardusa.com](mailto:sales@flameguardusa.com)

Tollfree: (855) 377-2100 Direct: (815) 219-4074

### DESCRIPTION

The X-Tinguish® X-Treme is used by Firefighters, and First Responders in all industries as a highly effective suppression tool against early stage and fully developed fires. When Seconds Count, deploy the X-Tinguish® X-Treme directly into the fire. Simple to operate. Saves lives and Property.

### SPECIFICATIONS

Total weight	13.90lbs. / 6.3 kg.
Compound weight	6.40 Lbs. / 2.9 kg.
Volume coverage	≤ 5,300cu.ft. / 150 m <sup>3</sup>
Discharge time	33-35 seconds
Activation method	Manual pull pin
Operational to	-65°F / -55°C

**Flame Guard USA**  
*Innovation in Fire Suppression*



# BUY AMERICAN BUY AQUAMESH®



Artwork courtesy of Joe Higgins of Fished Impressions



1.800.762.6374 • [www.riverdale.com](http://www.riverdale.com) • [sales@riverdale.com](mailto:sales@riverdale.com)





***Cape Seafoods Bait Shop  
Kicking off the Season!***



## **THE LARGEST BAIT VARIETY IN THE ATLANTIC NORTHEAST**

*In operation since 2001 and still going strong!*

**Trust Us for Your Fresh, Salted & Frozen Bait Needs**

**From (1) Carton to a Full Truck Load.**

**Herring, Mackerel, Pogies, Redfish, Rockfish, Tuna, Monkfish, Sardines,  
Plaice, Squid, Sea Robin, Halibut, & Silversides.**

**We've got you covered!**

**Great News...We now buy Lobster, too!**

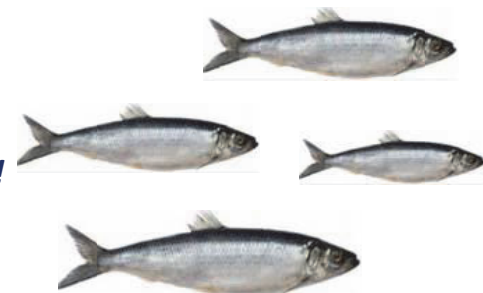
**Open Year Round (Serving clients 7 Days a Week from Mid-June To Mid-October)**

**Monday-Friday 5AM-3PM, Saturday 6AM-12PM & Sunday 6AM-10AM**

**Main Phone Line: 978.283.8522**

**Bait Shop Phone Line : 978.479.4642**

***If we don't have it... Please ask and we'll find it!***







# Massachusetts remains a leading commercial seafood producing state

The seafood industry has been important culturally and economically to Massachusetts for centuries. In 2019, Massachusetts remained one of the top states for commercial seafood landings and value in the country, according to NOAA Fisheries' recently released Fisheries of the United States, 2019 Report (<https://bit.ly/3xj0Dcl>). Massachusetts was second to Alaska in ex-vessel value of landings in 2019 at \$679.3 million. For the 20th year in a row, New Bedford was the highest valued U.S. port with a total ex-vessel landings value of \$451 million. New Bedford's consistently high landings value is being driven by high-value sea scallop landings. Massachusetts ranks second in the country in lobster landings, behind Maine.

Although the value of Massachusetts landings is being driven by the high-value sea scallop and lobster fisheries, a closer look at the top 10 species landed in Massachusetts by ex-vessel value (see table) shows a variety of shellfish, invertebrates, and finfish. Most of these top species are landed year-round. There are also several species

landed seasonally when they migrate into our waters, including bluefin tuna, black sea bass, scup, striped bass, and fluke.

The top two species harvested in state waters in 2019, in terms of value, were lobster and oysters. According to data reported by commercial harvesters, 9.4 million pounds of the total 16.7 million pounds of lobster and oyster landed in 2019 were harvested in state waters. This equates to an approximate ex-vessel value of \$53.7 million for lobster harvested in state waters. The top five Massachusetts ports for lobster landings in 2019 were Gloucester, New Bedford, Rockport, Plymouth, and Marshfield. Massachusetts issues just over 1,000 Coastal Lobster permits annually and on average about 700 of these permits are fished in a given year.

Eastern oyster landings in Massachusetts have increased significantly over the past ten years. The ex-vessel value of oysters landed has more than tripled from \$9.1 million in 2010 to \$30.1 million in 2019. The majority of oyster landings in Massachusetts, with an approximate ex-vessel value of



Photo by Jeremy Bishop on Unsplash

\$29 million, come from private aquaculture sites. DMF issued permits to 395 private aquaculture license site holders across nearly 30 coastal municipalities in 2019. More detailed information on license sites and landings by municipality can be found in the 2019 DMF Annual Report.

Detailed final landings data are not yet available nationally or in Massachusetts to fully evaluate the impact the COVID-19 pandemic had on the seafood industry but as

reported in the 3rd & 4th Quarter 2020 DMF News, it is clear that some segments of the seafood industry were significantly impacted. Seafood that is primarily sold in restaurants, like oysters, suffered the biggest losses. Regardless of 2020 impacts due to COVID-19, seafood remains important culturally and economically in Massachusetts. In fact, many seafood dealers have reported a higher demand for local seafood during the pandemic. It will be several months before 2020 data are available and analyzed to see how the shifting consumer demand and COVID-19 impacts combined to impact seafood landings and value across species.

*By Story Reed,  
Permitting & Statistics  
Program Manager,  
Massachusetts Division  
of Marine Fisheries*

[https://www.mass.gov/news/massachusetts-remains-a-top-seafood-producing-state?utm\\_medium=email&utm\\_source=govdelivery](https://www.mass.gov/news/massachusetts-remains-a-top-seafood-producing-state?utm_medium=email&utm_source=govdelivery)

Species	Landings (whole lbs)	Value
Sea Scallop	348,474,301	\$397,097,791
American Lobster	16,688,233	\$93,122,838
Eastern Oyster	9,097,916	\$30,140,622
Haddock	18,728,143	\$18,258,987
Atlantic surf clam	82,678,098	\$16,616,040
Ocean quahog	91,328,531	\$8,233,267
Jonah crab	9,697,607	\$8,137,653
Monkfish	14,024,887	\$8,100,894
Northern shortfin squid (Illex)	17,906,382	\$7,200,085
Soft shell clam	3,430,426	\$6,542,633

# New Breakaway Rope Regulation for Commercial Traps

May 1, 2021

*Order your rope or sleeves now...*



**Candy Cane 3/8" – \$100 ea.**

**Breakaway Rope:**

- 1700 Pound Breaking Strength
- 600 Foot Coils



**Red 5/16" – \$79 ea.**

**Breakaway  
Sleeves**

- 6 Feet Long
- Orange w/ White and Red Flecks

**Pack of 48 – \$74**



111 Myrtle Street  
New Bedford, MA  
@ketchamsupply



[www.ketchamsupply.com](http://www.ketchamsupply.com)  
[info@ketchamsupply.com](mailto:info@ketchamsupply.com)  
508.997.4787





New England Marine & Industrial  
www.newenglandmarine.com

## Lobster Bands

We carry:

Sheddar

Standard

Cold Water Sheddar

Jumbo



Buy them by the 1 pound bag, by the case or by the pallet. We also offer wholesale and volume discounts. Call and ask to speak to a salesman.



Dayglo &  
Flexabar  
Buoy Paint



Perone Buoys

Full selection of sizes  
in Stock

### Riverdale/Aquamesh Trap Wire

- Large inventory of trap wire in store
- Variety of sizes and colors available
  - Some trap kits in stock
- Order any size trap kits you may need

200 Spaulding Tpke  
Portsmouth, NH  
603-436-2836

294 Ocean St  
Brant Rock, MA  
781-834-9301

86 Cemetary Rd  
Stonington, ME  
207-367-2692

# Marshfield LobsterFest is **BACK!**



**Sunday, September 12, 2021  
11:00 AM - 6:00 PM EST**

Marshfield LobsterFest is a tasteful, fun celebration of all things coastal and

local! This event originated in 2019 in an effort to support our local lobstermen and to highlight Marshfield's natural beauty! Don't miss out on this great event. We have 50 artisan vendors, over 35 food vendors, games, a KidZ Zone, marine education and FUN!

The Massachusetts Lobstermen's Association (MLA) is a proud sponsor and will be participating at

the event. Stop by the MLA booth and say hello.

## Location

**Joseph Dribeek Way/  
Harbor Park  
100 Central Street  
Marshfield, MA 02050**

## Directions

### From the South

Take Route 3 North to Exit 11. At the end of the ramp, bear right onto Route 14. At the rotary, take the second exit to continue on Route 14



(Congress Street). After ½ mile, take a slight left onto Route 139. After 2 ½ miles, take a right onto Regis Road. Park at Governor Winslow School.

### From the North:

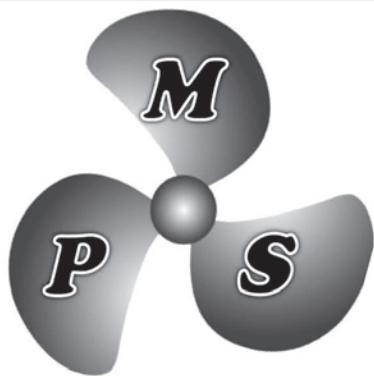
Take Route 3 South to Exit 11. Follow directions from above.

**For more information on the event please visit:**

<https://web.southshorechamber.org/events/Marshfield-LobsterFest-2021-18878/details>



OVER 20 YEARS EXPERIENCE ~ ALL MATERIALS & SIZES

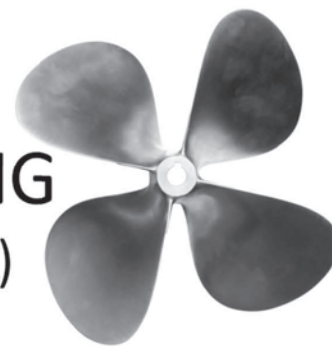


**FOR FAST SERVICE  
CALL MIKE @  
508.979.8000**

[marine.propeller128@gmail.com](mailto:marine.propeller128@gmail.com)

**MARINE**  
PROPELLER SERVICE

REPAIRS &  
RECONDITIONING  
(Fast & Fully Insured)



*THE MOST RELIABLE PROPELLER SERVICE COMPANY ON THE SOUTHCOAST*

74 MAIN STREET FAIRHAVEN MA 02719 508.979.8000 FAX 774.206.6449













# MLA letter of comment on BOEM's Notice of Intent for Offshore Wind Project

July 12, 2021

Program Manager  
Office of Renewable Energy, Bureau of Ocean Energy Management  
45600 Woodland Road  
Sterling, Virginia 20166

Submitted Via the Portal

RE: BOEM-2021-0047 "VINEYARD WIND SOUTH COP EIS"

Dear Program Manager,

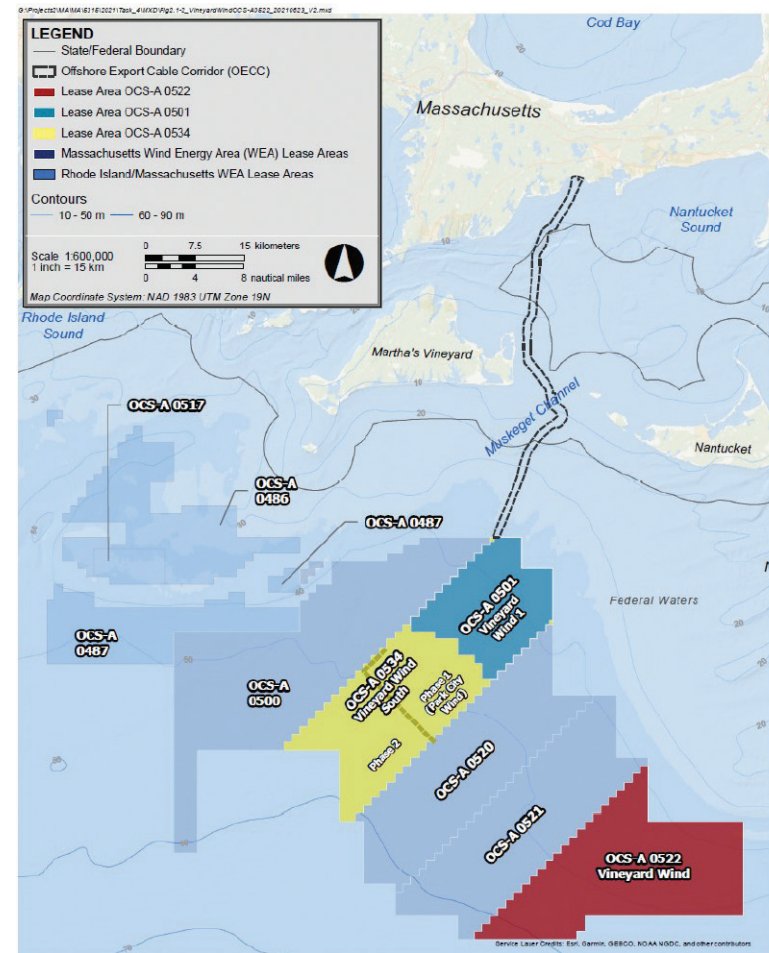
The Massachusetts Lobstermen's Association (MLA) respectfully submits this letter of comment on behalf of its 1800 members on the BOEM-2021-0047- Notice of Intent to Prepare an Environmental Impact Statement for the Vineyard Wind South Project Offshore Massachusetts.

Established in 1963, the MLA is a member-driven organization that accepts and supports the interdependence of species conservation and the members' collective economic interests. The membership is comprised of fishermen from North Carolina to Canada and encompasses a wide variety of gear types from fixed gear and mobile gear alike. The

MLA continues to work conscientiously through the management process with the Division of Marine Fisheries, Atlantic States Marine Fisheries, New England Fisheries Management Council, and the Bureau of Ocean and Energy Management to ensure the continued sustainability and profitability of the resources in which our commercial fishermen are engaged in.

The MLA remains concerned about the development of Offshore Wind (OSW) here in the Southern New England (SNE). The MLA is unyielding when it comes to pre, during and post constructions studies. It is of the utmost importance that initial studies be conducted not only the lobster resource from the larval stage to the legally harvestable size lobsters as well as an entire benthic habitat pre, post and during construction of any wind turbine in SNE.

A survey on the larval settlement in each developed area will help paint a better picture going forward as to what the impacts are to the lobster resource as these projects become more actively built. Also a survey along the cable routes is imperative given the limited research on Electromagnetic Fields (EMF) on the lobster and conch resources. We are still at the beginning of this and we need to make sure we get it done right as the sheer amount of electric cables out there is unprecedented and we do not know what the outcome will be.



Vineyard Wind South  
VINEYARD WIND

Figure 2.1-2  
Massachusetts Wind Energy Area

The MLA is pleased to report that we have been conducting pre-construction survey with Vineyard Wind through the University of Massachusetts School for Marine Science and Technology (SMAST).

The MLA is currently embarking on the third year, pre-construction survey in the Vineyard Wind 1 lease area-OCS-A-0501 lease area. The survey results will be shared during our Annual Weekend and Industry Trade Show in March of 2022.

While, the governments' ongoing and aggressive conservation efforts to increase the population of the North Atlantic Right Whale (NARW) is distressing to the commercial trap/pot industry when the government allows large scale construction projects while not fully understanding and exploring the long-term impacts of OSW on the NARW.

Furthermore, the commercial lobster and fixed gear industries are continually constrained because of potential future interactions with these animals, there is not enough known about the impacts of OSW construction, EMF and noise impacts on the NARW? The MLA continues to express concerns that the NARWs habitat and food sourcing locations will not be disrupted or eliminated completely.

The wind lease area has been utilized by the NARW to feed on the abundant calanus resource there and they continue to come and feed every year; what will the impact be on the calanus? More research is undeniably needed in this area of concern so that the commercial fleet does not further endure any more baseless constraints.

In closing, we would like to thank BOEM for their ongoing efforts to engage the commercial fishing industry stakeholders throughout this lengthy process and are encouraged that they will do their due diligence when vetting and engaging any industry representative. Should there be any further questions or comments please feel free to call me at 781-545-6984.

Sincerely,

*Beth Casoni*

MLA, Executive Director

## Are you thinking of buying or selling?

Boats | State and Federal Permits | Complete Businesses

ATHEARN MARINE AGENCY, INC.



SERVING FISHERMEN SINCE 1946

Tel: (508) 999-4505

Email: [sales@athearnmarine.com](mailto:sales@athearnmarine.com)

[www.athearnmarine.com](http://www.athearnmarine.com)

10 Union Wharf, Fairhaven, MA 02719





## CARES Act

FROM PAGE 1

eligible participants must have incurred an economic revenue loss greater than 35 percent as compared to their prior five-year average revenue. States are permitted to select the period within 2020 to which the average revenue would be compared. DMF worked with industry working groups to select timeframes at the sector level to better reflect the timing of the greatest economic loss for each sector. Further federal guidelines require that participants must be at least 18 years of age and cannot be made “more than whole” when comparing their 2020 revenue (inclusive of both rounds of CARES Act Fisheries Relief as well as other pandemic-related assistance) to revenues earned during a traditional year. Because the federal requirements for Round 2 closely match those of Round 1, DMF intends to run the Round 2 program largely using the same methods that led to the efficient and expedient disbursement of funds during Round 1.

DMF initiated its Round 2 program by holding meetings with the four sector working groups that were established

for Round 1 during April and May of 2021. Working group members were sector participants representing a diversity of businesses and municipalities across the Massachusetts coast. The working groups reviewed decisions made in structuring each sector's eligibility criteria and payment scaling methods for Round 1 and discussed what changes to the program would comply with Sec. 12005 of the CARES Act and associated federal regulations. All four working groups were in favor of using the general Round 1 program structure for Round 2 but supported slight modifications with the aim of allowing more sector participants to qualify for relief funds. One modification to the program will be the addition of another time period within each sector that can be used to calculate revenue loss. Flexibility in selecting a different time period for comparison will hopefully result in a larger pool of eligible applicants in Round 2 as compared to Round 1.

After receiving feedback from each sector, DMF reconvened its larger, cross-sector industry advisory panel on May 25 to finalize the program approach. This process resulted in sector-specific spending plans intend-

ed to be as inclusive as possible for those participants whose income is dependent on Massachusetts fisheries.

On June 9, 2021, DMF submitted the Round 2 Spending Plan to NOAA Fisheries and, following NOAA feedback, submitted a revised Spending Plan on June 25. On July 7, NOAA approved DMF's Round 2 Spending Plan. The DMF team is now preparing Round 2 applications and merging in data gathered during Round 1 to streamline the application process where possible. DMF aims to mail all applications to the relevant permit holders by the end of July.

DMF intends to run the Round 2 application periods for all sectors simultaneously. This way, DMF will be able to address any concerns with landings misattributions (e.g., aquaculture sales reported as

wild harvest) and avoid confusion for permit holders eligible in multiple sectors. In order to meet the September 30, 2021 target set by the Consolidated Appropriations Act of 2021, all applications must be returned by August 28, 2021. This will allow DMF to reconcile any clerical mistakes in the applications, make rulings on eligibility appeals, and provide the Atlantic States Marine Fisheries Commission a list of recipients to receive payments from the Round 2 CARES Act Fisheries Relief program.

*By Maggie Nazarenus  
Grants Coordinator  
Division of Marine Fisheries*

[https://www.mass.gov/news/massachusetts-allocated-23-million-for-additional-cares-act-fisheries-relief?utm\\_medium=email&utm\\_source=govdelivery](https://www.mass.gov/news/massachusetts-allocated-23-million-for-additional-cares-act-fisheries-relief?utm_medium=email&utm_source=govdelivery)

Locally Harvested with the Best Management Practices for Sustainability!



www.lobstermen.com

Ask for the Green Band!

8 Otis Place Scituate, MA 02066  
781.545.6984

Massachusetts

Make cleanup  
easy and fast.

# Blast Away!

Onboard Pressure Washers  
5.6 GPM @ 3,500 PSI

Our pressure washers come with everything you need, including 50' hose and wand with turbo nozzle.



Belt Driven



Hydraulic

Salt or Fresh Water

**Coastal Hydraulics, Inc.**

603-474-1914 • sales@coastalhyd.com

www.coastalhyd.com

28 Route 286, Seabrook, NH





# NEW ENGLAND PROPELLER, INC.

Distributor of Michigan Propellers

**Inboard • Outboard**

Next Generation 3D Computerized Propeller Analyzer  
Computerized Dynamic Balancing



## Marine Fuel Tanks

Custom Fabricated & Tested to U.S.C.G Specifications  
*By Capeway Welding*

- Marine Propeller Sales & Repairs - ***4000 Props in Stock***
  - Sierra Engine Parts for All Outboards & IOs
  - CDI Electronics • Camp & Godfrey Zincs
    - NGK Spark Plugs
  - Duramax Cutless Bearings • Spurs Line Cutters
    - PSS Dripless Shaft Seals
  - Buck Algonquin - Struts, Rudders & Stuffing Boxes
    - S/S Shafting • Drive Savers • Globe Impellers



9 Apollo Eleven Rd., Plymouth, MA 02360

Tel: 508-747-6666 800-635-9504 - [neprop.com](http://neprop.com)

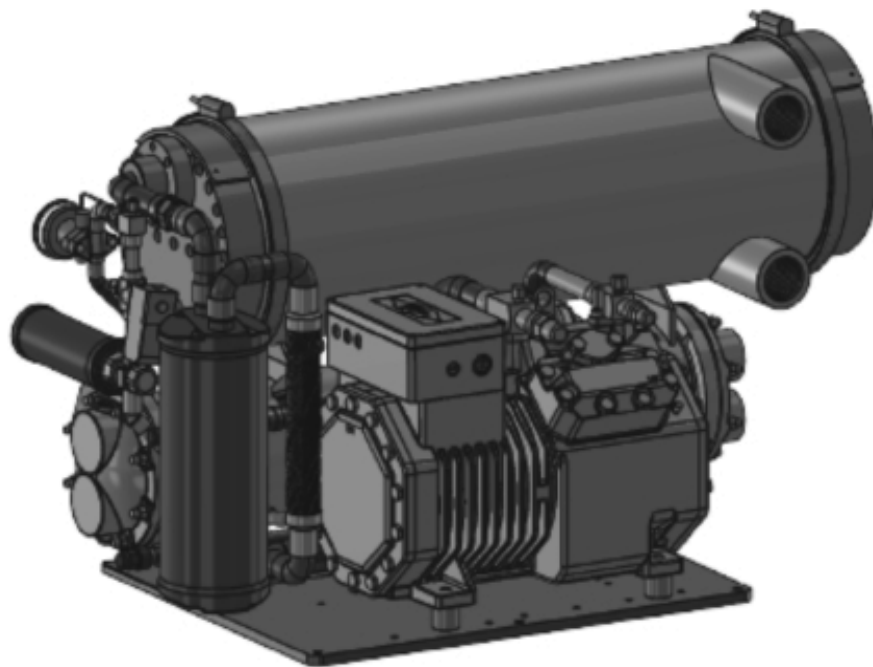




# New England Marine Engineering & Supply, Inc.

Marine • Industrial • Commercial • Refrigeration

10 TON ELECTRIC TITANIUM RSW  
INTEGRATED MARINE SYSTEMS



"New England Marine Engineering & Supply, Inc & Integrated Marine Systems, Inc is proud to announce & debut the new IMS 10 Ton Titanium Electric RSW at the 2018 Seafood Processing North America Show on March 11-13 Booth 1875. Come see us and be the first to view the latest IMS system to be introduced to the industry for the fishing vessels ranging from 40' - 80'.

It's going to be the talk of the show."

133 North Front Street, New Bedford, MA. 02740

[www.nemesinc.com](http://www.nemesinc.com) 1.800.540.8893





# New England Fishery Management Council

FOR IMMEDIATE RELEASE  
July 9, 2021

PRESS CONTACT: Janice Plante  
(607) 592-4817, [jplante@nefmc.org](mailto:jplante@nefmc.org)

## Council Receives Updates on Offshore Wind, Atlantic Herring, EBFM, and More; Approves 2021-2025 Research Priorities

The New England Fishery Management Council met June 22-24, 2021 by webinar. In addition to the actions the Council took on scallops, groundfish, and skates, here are other important highlights.

**Habitat/Offshore Wind** – The Council received offshore wind presentations from three different agencies.

- The Greater Atlantic Regional Fisheries Office (GARFO) covered how NOAA Fisheries cooperates and coordinates with other agencies on wind issues, develops checklists to help guide analyses of socio-economic impacts on fishing communities, as well as Endangered Species Act biological assessments and other analyses, conducts essential fish habitat (EFH) consultations and EFH mapping, and more;
- The Northeast Fisheries Science Center focused on offshore wind impacts on federal scientific surveys and the associated implications; and
- The Bureau of Ocean Energy Management (BOEM) provided a broad overview of offshore wind energy projects throughout the Atlantic region.

The Council agreed to develop comments on the Empire Wind and New York Bight offshore wind projects shown in the maps at right, as well as on: (1) the Coast Guard's Port Access Route Study regarding approaches to Chesapeake Bay, VA; and (2) the Blue Water Fisheries aquaculture project.

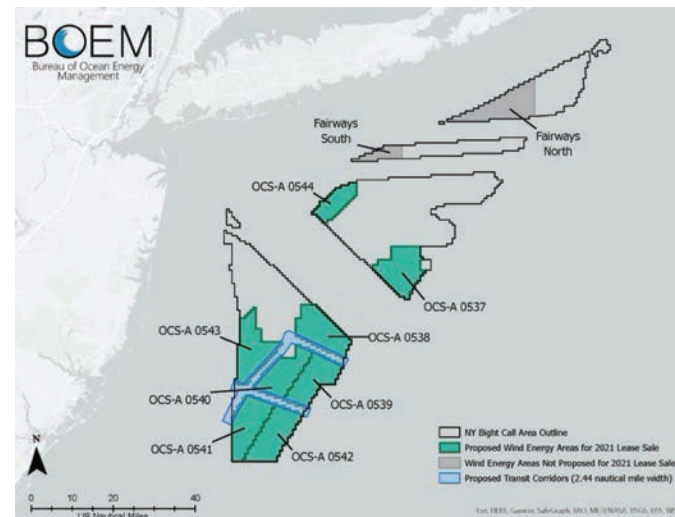
The Council also received a progress report on other habitat-related work.

**Atlantic Herring** – The Council received updates on two actions that are under development for Atlantic herring.

- Framework Adjustment 9: This action includes alternatives to address the overfished status of the resource and adjust herring accountability measures. The Council will continue



*The New England Council agreed to develop comments – jointly with the Mid-Atlantic Council if possible – on BOEM's notice of intent to prepare an environmental impact statement for the Empire Wind project (above) and BOEM's New York Bight proposed sale notice (below).*







## New England Fishery Management Council

to work on [Framework 9](#) over the summer and then take final action in September. Here is the [SSC report](#) and input on herring rebuilding strategies for the framework.

- Framework Adjustment 7: This action is focused on protecting adult spawning herring on Georges Bank. Work on [Framework 7](#) will continue throughout the summer, and the Council will receive a progress report in September.

**Ecosystem-Based Fishery Management (EBFM):** The Council received an update on the EBFM Management Strategy Evaluation Steering Committee's [work](#) to set the stage for [public outreach workshops](#) to help fishermen and other stakeholders better understand the fundamentals of ecosystem-based fishery management. Through these workshops, the Council is striving to:

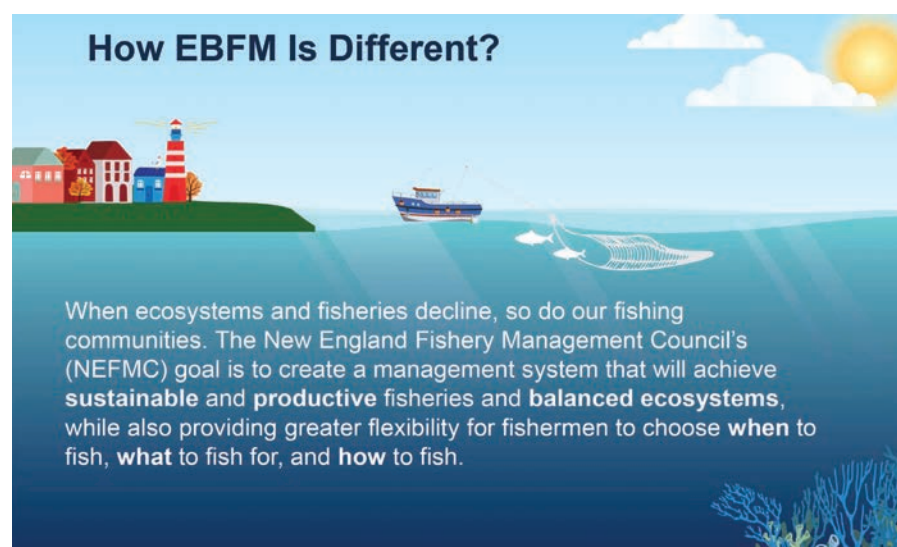
- Build a greater understanding of EBFM as a tool to assess and manage fisheries;
- Identify potential opportunities and concerns that different stakeholders see in EBFM; and
- Give stakeholders an opportunity to contribute feedback and build a willingness to keep participating in the process.

Additional work on this effort will continue through the summer and early fall. The Council will receive another progress report during its September meeting.

**2021-2025 Council Research Priorities:** As required by the Magnuson-Stevens Fishery Conservation and Management Act, the Council, in conjunction with its Scientific and Statistical Committee (SSC), developed its five-year list of research priorities and data needs. As part of this effort, the former 2020-2024 list was [reviewed](#) by the Council's plan development teams, advisory panels, and committees, which in some cases suggested modifications. The SSC then discussed the proposed 2021-2025 list and [provided comments](#).

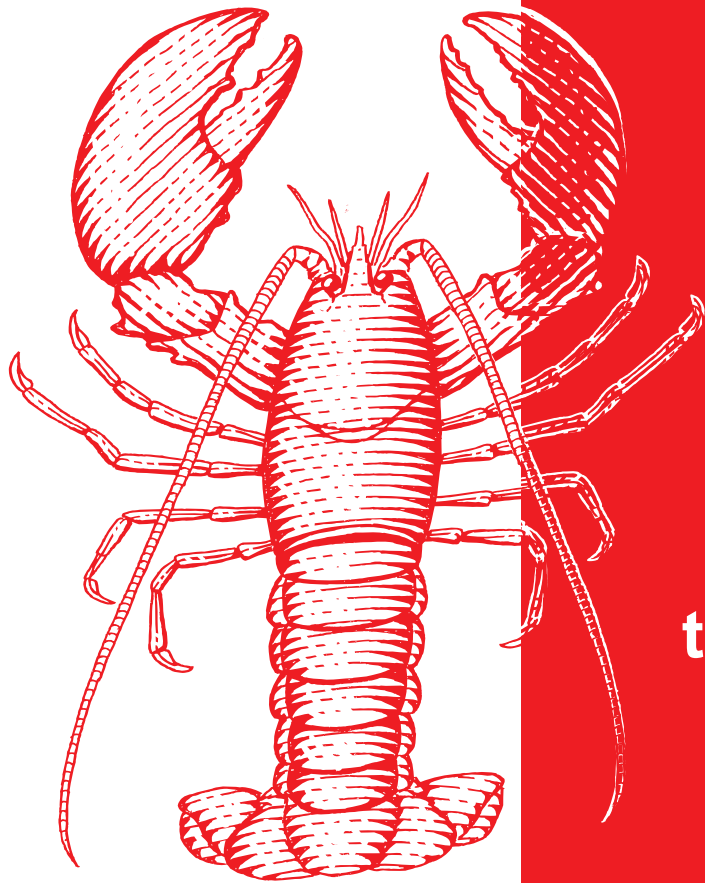
After weighing the collective feedback, the Council decided to keep all 108 priorities from the 2020-2024 list and add two more research priorities to the updated 2021-2025 list. These were:

- #109 – Increase understanding of scallop spatial population structure and population dynamics, including processes such as connectivity and source-sink dynamics, which would improve scallop stock assessments; and



The Council, working with [Green Fin Studio](#), has produced a wide range of public outreach materials to help fishermen and other stakeholders better understand what EBFM is all about. Infographics, stakeholder brochures, presentations, and other easy-to-read documents are posted on the Council's [EBFM Public Information Workshops webpage](#).





# Everything for Lobstermen.

traps, buoys, rope & supplies

**KETCHAM  
SUPPLY**

New Bedford, MA

111 Myrtle Street  
New Bedford, MA 02740

508.997.4787

[www.ketchamsupply.com](http://www.ketchamsupply.com)  
[info@ketchamsupply.com](mailto:info@ketchamsupply.com)

 [ketchamtraps](#)

 [ketchamsupply](#)



# New England Fishery Management Council

- # 110 – Study whether dynamic reference points should be used given a changing climate since static reference points may not be appropriate as species shift due to climate change.

The final version of the New England Council's 2021-2025 Research Priorities and Data Needs is posted [HERE](#) in two formats – as a PDF file and as a searchable Excel file.

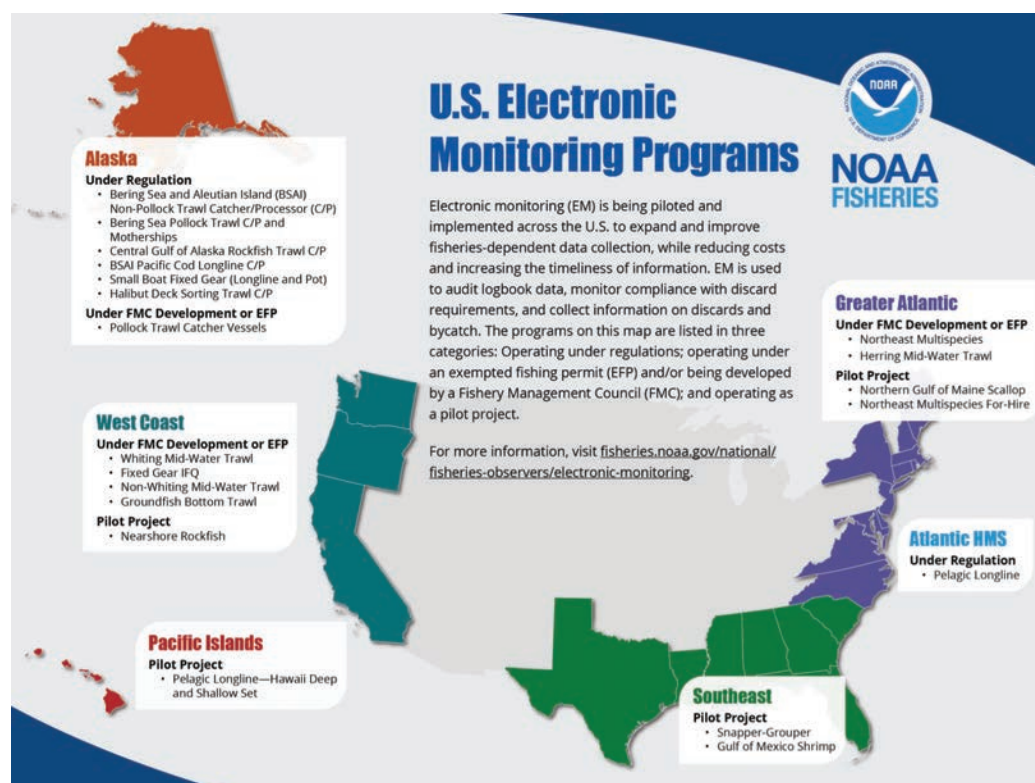
**White House Report** – The Council received a [briefing](#) from NOAA Fisheries leadership on a preliminary White House report titled “[Conserving and Restoring America the Beautiful.](#)” Council members asked questions about how some of the provisions within the report applied to fisheries and whether the current conservation efforts by the Council would be considered in the [Administration's goal](#) of “conserving at least 30 percent of our lands and waters by 2030.”

The Council Coordination Committee (CCC), which includes the chairs, vice chairs, and executive directors of all eight of the nation's regional fishery management councils, discussed the report during its [May 2021](#) meeting. The CCC agreed to form an Area-Based Management Subcommittee to ensure that current fishery management areas and marine protected areas are correctly described and counted as contributing to the Administration's 30x30 goal. New England Council Vice Chair Eric Reid is chairing the new CCC subcommittee.

**Electronic Monitoring** – The Council received a [presentation](#) on NOAA Fisheries' [draft procedural directive](#) on applying information law to electronic monitoring (EM) data in U.S. fisheries. The Council reviewed and approved a letter with comments about the draft directive.

**Financial Disclosures** – The Council reviewed a draft National Marine Fisheries Service [policy directive](#) containing procedural guidance for financial disclosures and recusals for regional fishery management councils. The Council agreed to submit a comment letter on the draft.

**Southeast For-Hire Reporting** – The Council was briefed on new reporting requirements implemented in January 2021 through the Southeast For-Hire Electronic Reporting Program. These requirements apply to all for-hire permits issued by the Southeast Regional Office of NOAA Fisheries. New England and Mid-Atlantic for-hire fishermen on vessels possessing dolphin/wahoo permits from the Southeast Regional Office have voiced concerns over the program. These vessel owners and captains now need to enter 12 additional data elements after each trip to meet the new requirements, regardless of whether they target and/or catch







# New England Fishery Management Council

dolphin/wahoo. The Council said it was unclear how data from permit holders would be used, particularly on trips that do not land dolphin/wahoo. The Council agreed to send a letter requesting an explanation of how each of these new data elements, most of which are socio-economic in nature, are to be utilized in management moving forward.

**Highly Migratory Species (HMS)** – The Council received a presentation on Amendment 13 to NOAA Fisheries’ 2006 Consolidated HMS Fishery Management Plan. The amendment, which is out for public comment through July 20, 2021, focuses on bluefish tuna issues.

**HMS AP, ICCAT AC** – The Council also received an update on recent meetings of the HMS Advisory Panel and the Advisory Committee to the U.S. Section of the International Commission for the Conservation of Atlantic Tunas (ICCAT). All related documents are posted HERE.

## Fare Thee Well Class of 2012



### Thanks for Nine Years of Dedicated Service

The Council bid a fond farewell to four members who were attending their final full Council meeting. Pictured clockwise from the upper left, they included: Vincent Balzano of Maine; Dr. Matt McKenzie of Connecticut; Council Chairman Dr. John Quinn of Massachusetts; and Terry Alexander of Maine. All four have served three consecutive three-year terms on the Council and were ineligible for reappointment. Their final day of service is August 10, 2021. The Council paid tribute to each of them following their final committee reports. The Council also expressed appreciation to Tim Donovan, former assistant director of the NOAA Office of Law Enforcement’s Northeast Division, who attended his final Council meeting as well.

## Commercial eVTR Update

The Council had an extensive debate about outreach efforts related to the upcoming implementation of new electronic vessel trip reporting requirements. Beginning November 10, 2021, all commercial vessels with federal permits for species managed by the Mid-Atlantic Council or New England Council will be required to submit vessel trip reports (VTRs) electronically as eVTRs within 48 hours of the end of a trip unless required sooner, as is the case with some sector allocations. This action also applies to for-hire party/charter vessels with permits for species managed by the New England Council.

- Links to additional information and training opportunities are posted on the New England Council’s website HERE and on the Mid-Atlantic Council’s website.
- Information about eVTR software options is available on the GARFO website, and many more training and outreach resources will become available soon.



# Rose Marine

Gloucester, MASS [www.rosesmarine.com](http://www.rosesmarine.com)

**877-283-3334**

## Aqualoy Stainless Propeller Shafts & Accessories



Largest stock of **Aqualoy** Stainless Prop Shafting on the East Coast  
With *Emergency* turn-around time available.

Call or e-mail Peter Tetrault for a price on your next shaft.  
[peter.tetrault@rosesoil.net](mailto:peter.tetrault@rosesoil.net)



- All Seamless Tubing
- High pressure available
- 90/10 copper-nickel
- 2" to 5" Dia. Body in stock



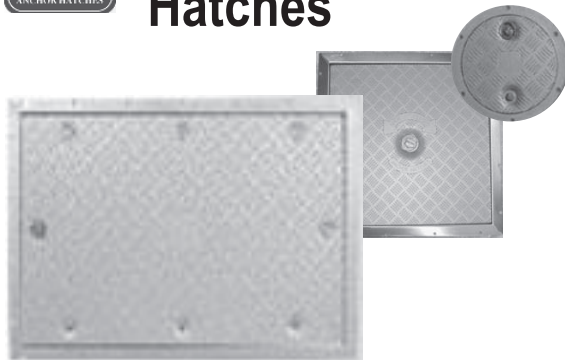
- Stainless Steel Wrapped
- Teflon Core
- Super Low friction

Ask for the "GREEN MARINE" cable

**KOBELT**  
Controls



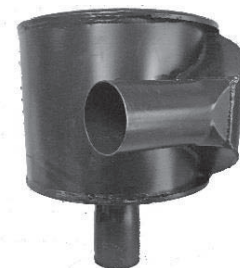
## Anchor Flush Mount Hatches



## Mufflers and Exhaust Components



Stainless Steel Mufflers  
And Accessories  
2" – 8" inlet size in stock







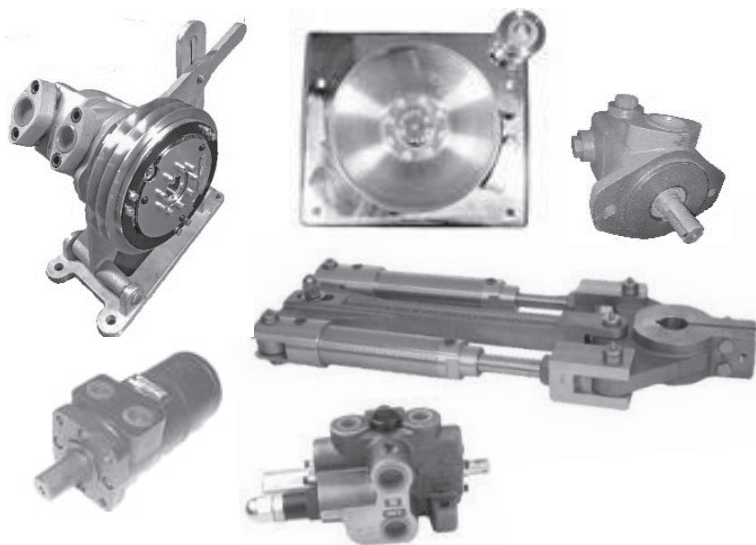
# Rose Marine

Gloucester, MASS [www.rosesmarine.com](http://www.rosesmarine.com)

## 877-283-3334

### Sales and Service of Hydraulic Components

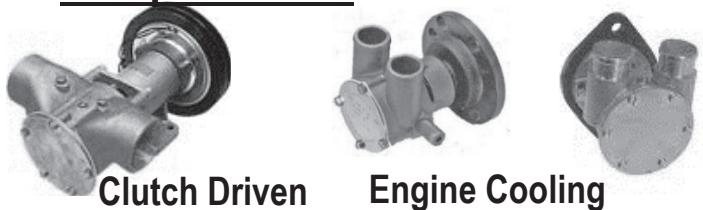
We will customize a hydraulic hauling or power-steering system to fit your exact needs.



**Authorized SEASTAR Solutions (FORMERLY Teleflex)**  
Repair Facility for the Northeastern U.S.



Complete Line of  
**Johnson Pump®**  
Pumps & Parts



Clutch Driven

Engine Cooling



**Hydraulic Driven**

*Sized to the flow rate to fit your boat.*

Complete Line of



**Pumps & Parts**

**PACKLESS SEALING SYSTEM**  
**SHAFT SEAL**



**Stocking Distributor**

**Combination Shaft Zinc & Line Cutters**



**Shaft Sizes**  
**3/4" to 2-1/4"**



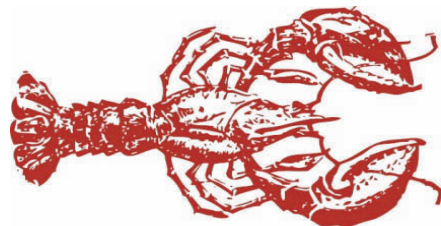


Encore Hartco Tools & Clips  
Stanley Spenax Tools & C-Rings  
Wematic Tools & D-Rings  
Simonds Pneumatic Wire Cutters  
Spotnail Staplers & Staples



(781) 826-2522  
Fax (781) 826 5252  
[www.fisherairfasteners.com](http://www.fisherairfasteners.com)  
[chris@fisherairfasteners.com](mailto:chris@fisherairfasteners.com)

Complete Parts Inventory  
Tool Repair Service



“Specializing in the sale & delivery of  
**LOBSTER BAIT**  
for over 30 years”

**FRESH FROZEN AND SALTED BAIT AVAILABLE**

**SKATES ~ HERRING ~ POGIES ~ HADDOCK ~ COD FISH ~ POLLOCK  
FLAT FISH ~ FISH SKINS ~ RED FISH ~ DOG FISH HEADS ~ SALMON**



**C & P BAIT**  
33 Wright St  
New Bedford, MA 02740

**Contact:**  
Danny Costa 508-951-9818  
Carlos Pereira 508-951-9819





# MLA letter of concern regarding mosquito spraying in Gloucester

July 26, 2021

Gloucester Department of Public Health  
Max Schenk, Interim Public Health Director  
3 Pond Road  
City Hall Annex  
Gloucester, MA 01930

Via: [mschenk@gloucester-ma.gov](mailto:mschenk@gloucester-ma.gov)

RE: Mosquito spraying efforts

Dear Director,

The Massachusetts Lobstermen's Association (MLA) respectfully submits this letter of great concern on behalf of its 1800 members regarding mosquito spraying being undertaken in Gloucester. The MLA members greatly depend upon smart and ecofriendly measures to mitigate mosquitos while protecting the healthy ecosystem they depend upon to earn a living.

The MLA has been hearing from several of its members about these ongoing efforts and they are greatly concerned that the impacts to the lobster resource will be equal to what happened in Long Island Sound (LIS) in the early 2000's when the EEE outbreak happened. Unfortunately, the lobsters and several other species in the LIS were killed and have yet to return.

Established in 1963, the MLA is a member-driven organization that accepts and supports the interdependence of species conservation and the members' collective economic interests. The membership is comprised of fishermen from Maryland to Canada and encompasses a wide variety of gear types from fixed gear and mobile gear alike. The MLA continues to work conscientiously through the management process with the Division of Marine Fisheries and the Atlantic States Marine Fisheries and the New England Fisheries Management Council to ensure the continued sustainability and profitability of the resources in which our commercial fishermen are engaged in.

While there have been several "new" laws and several "new" chemicals created over the last twenty years to protect the ecosystem while killing mosquitos and their larvae, the MLA does not believe there are any safe chemicals that have been created that will not only kill the mosquitos and their larvae but also the lobsters and their larvae. The detrimental impact this will have on the entire commercial lobster industry would be catastrophic.

Gloucester is the number one port for lobster being landed in the Commonwealth with 135 permitted commercial lobstermen, employing 300+ crew, landing over 3.2 million pounds of American Lobster being landed with a value of 72.8 million dollars to the local economy. The negative economic impact would be felt in the local restaurants, stores, and on the tax base as the industry would be shut down should there be any use of chemicals near any watershed feeding into the ocean.

The MLA has been following the ongoing LIS issue over the years and after reviewing numerous papers and articles we are extremely concerned about any use of the chemicals that were used in Connecticut. The paper Malathion immunotoxicity in the American lobster (*Homarus americanus*) upon experimental exposure by Sylvain De Guise a,\*, Jennifer Maratea a, Christopher Perkins ba and the Department of Pathobiology and Veterinary Science, University of Connecticut, concluded that "our results suggest that lobsters are highly sensitive to both the lethal and sub-lethal toxicity of malathion in sea water. A reduction in immune functions could likely result in an increase susceptibility to infectious agents, and could have contributed to the mass mortality if exposure was sufficient."

Furthermore, the report RESPONDING TO A RESOURCE DISASTER: AMERICAN LOBSTERS IN LONG ISLAND SOUND 1999 – 2004 by: Nancy Balcom1 and Penelope Howell2, CTSG-06-02, 1Connecticut Sea Grant, University of Connecticut 2CT Dept. Environmental Protection, Marine Fisheries Division found that "Pesticides were being applied in both states to combat the spread of the West Nile virus, which had caused seven human deaths by early September. Lab studies showed that these pesticides can have sub-lethal or lethal effects on the various life stages of lobsters, depending on the exposure time and concentration."

The Massachusetts Lobstermen's Association continues to monitor this most sensitive issue up and down the coast as the last thing we want to see is a repeat of Long Island Sound in Gloucester. Thank you for your thoughtful consideration and should you have any follow up questions please feel free to reach out to me directly.

Sincerely,

Beth Casoni

MLA, Executive Director

[www.lobstermen.com](http://www.lobstermen.com)

cc.

K. Theoharides, Sec. MAEEA

R. Amidon, Com. MAFWE

D. McKiernan, Dir. MADMF

MA Coastal Caucus

S. R. Theken,

MLA Ex. Com.

P. Page, Mortillaro Lobster

# REPOWER your boat with a new Cummins diesel engine.



**QSB6.7**  
250-480 HP



**QSC8.3**  
500 HP



**QSL9**  
290-410 HP



**QSM11**  
610 HP

**Contact your local Cummins distributor or dealer for complete program details.**

**Steve Nadeau** - MA, ME, RI and Upstate NY  
207-510-2247 | [steve.nadeau@cummins.com](mailto:steve.nadeau@cummins.com)

**Will Collins** - MA, RI, CT and NY  
781-801-1772 | [will.collins@cummins.com](mailto:will.collins@cummins.com)

## NETWORK OF MARINE ENGINE DEALERS THROUGHOUT NEW ENGLAND

**Billings Diesel and Marine**  
Stonington, ME  
(207) 367-2328

**Great Bay Marine**  
Newington, NH  
603-436-5299

**James Rich Boat Yard**  
Southwest Harbor, ME  
(207) 244-3208

**Niemiec Marine**  
New Bedford, MA  
(508) 997-7390

**Brewers' Plymouth Marine**  
Plymouth, MA  
(508) 746-4500

**Gorham's Diesel Repair, Inc.**  
Braintree, MA  
(781) 843-0816

**Journey's End Marina**  
Rockland, ME  
(207) 594-4444

**Point Judith Marina**  
Wakefield, RI  
(401) 789-7189

**Brewer Greenwich Bay**  
Warwick, RI  
(401) 884-0544

**Hinckley Yacht Services**  
Portsmouth, RI  
(401) 683-7100

**Kennedy Marine  
Engineering & Fabrication**  
Steuben, ME  
(207) 546-7139

**Port Niantic Inc**  
Niantic (East Lyme), CT  
(860) 739-2155

**Bristol Marine**  
Bristol, RI  
(401) 253-2200

**Hinckley Yacht Services**  
Southwest Harbor, ME  
(207) 244-5572

**Kingman Yacht Center**  
Cataumet, MA  
(508) 563-7136

**Rhode Island  
Engine Co., Inc.**  
Narragansett, RI  
(401) 789-1021

**Cape Ann Marine**  
Gloucester, MA  
(978) 283-2116

**Hodgdon Yacht Services**  
Southport, ME  
(207) 633-2970

**MacDougall's Cape Cod  
Marine Service**  
Falmouth, MA  
(508) 548-3146

**Russ Marine Service**  
Peabody, MA  
(978) 532-3373

**Casco Bay Diesel**  
Portland, ME  
(207) 878-9377

**Hyannis Marina**  
Hyannis, MA  
(508) 775-5662

**Merri-Mar Yacht Basin**  
Newburyport, MA  
(978) 465-3022

**Great Island Boat Yard**  
Harpswell, ME  
207-729-1639

**Independent Field Service**  
Dewitt, NY  
(315) 481-4077

[salesandservice.cummins.com](http://salesandservice.cummins.com)



# WE DELIVER FRESH LOBSTER BAIT

**INCLUDING:**

HERRING

POGIES

MACKEREL

RED FISH

SKINS

BLUEFISH

CHUM

SALMON  
HEADS



*FRESH, SALTED, AND QUICK FROZEN BAIT*

## Barrel Head Bait

*WE SELL SALT!*

**For More Information:**

**Mark Flight**  
[mark@barrelheadbait.com](mailto:mark@barrelheadbait.com)

**To Place An Order:**

**The Bait Line:**  
**857-200-2129**  
**Or Fax:**  
**617-561-8471**

# MLA Classifieds

Classified ads are a free benefit to MLA Members and Non-members are a flat \$25.00. Ads run for 5 months & will be automatically deleted unless you call the MLA office to renew.

781-545-6984 or email ads to: [tracey.abboud@lobstermen.com](mailto:tracey.abboud@lobstermen.com)

\*All ads are subject to review prior to placement

AD #1 (8/21) **FOR SALE** – Freeman 15 X24 oval hatch. \$150.00 Freeman 24 X 24 hatch. Both in good shape \$250.00 401-842-8165. Ted

AD#2 (5/21) **FOR SALE**– 19 2001 Eastern (first year they bought the mold from Seaway); 90 hp Mercury outboard; Hydroslave hauler. Boat was custom built. Center console w/ canvas top. Center console was built more forward creating more deck space for gear/fishing room. Transom was built higher. Stainless bow rails, fish finder, depth GPS, washdown pump, & Load Rite trailer only a few years old w/ power winch. Live tank & culling table. Boat in great shape. About 100 traps w/ rope & buoys. \$18,500 for all. Will sell separately. Serious inquiries only. Call Jack after 5 p.m. – 508-747-5680.

AD#3 (5/21) **FOR SALE** – Hydraulic Components, parts and service. Pumps, Motors, Valves and Accessories. Hydraulic Hoses made while you wait. Great Prices – Same day service (in many cases)- Wide selection of in-stock items. Rebuilt items occasionally available. ROSE MARINE, Gloucester, MA 877-283-3334

AD#4 (6/21) **FOR SALE - Turn-Key Lobster Business-owner retiring:** Area 1 Coastal License-800 Trap Allocation 30 SISU Fiberglass Lobster Boat. New 383 Mercruiser -700 hours. Re-built Borg Warner velvet drive gear-new neck-cut out stern-New (2) 80 gallon fiberglass fuel tanks-New hydraulics-12 in' hauler-Boat totally re-wired. New Seacocks- 450 traps-good condition/ropes/survival suits. \$70,000 or B.O. Pete 617-653-5012 Leave a message

AD#5 (6/21) **FOR SALE** – 24 Crosley Gillnet hauler w/ stainless steel stand \$1,000.00 11 roller SS-bracket & stand \$800.00 22- New re-hung foam core gillnets size 7x16x25 MB \$100.00 ea. 10- New re-hung foam core 6 1/2x16x25 MB \$100.00 ea. 24- Webs 7x16x25 MB \$45.00 ea. 8x16x12 ft New bag w/ 85 pound lead-line hung once w/offshore floats \$80.00 ea. 80 white pingers Bought new in 2018 fished 12 weeks \$25.00 ea. 20 Danforth Anchors -like new \$25.00 ea. Several used gill-net foam stand up 6 1/2 -7-11-12 Best offer. Text Bob 617-694-4802

AD#6 (5/21) **FOR SALE** – Trap racks, heavy aluminum. 3 total: Sizes are 3'x 8- 3'x 12 & 3'x 20 BROB Call Chet @508-725-8452

AD#7 (6/21) **FOR SALE** – 60 Totes all in good shape \$8.00 ea. Call Patrick 617-538-3474

AD#8 (4/21) **HELP WANTED** – Looking for a stern-man for lobster boat in Marshfield – must be responsible-will train- Call 781-767-4130 or 508-510-7792

AD#9 (8/21) **FOR SALE** – 30 Crosley Deep Water Gillnet lifter with SS stand for sale. Includes large roller also with SS stand. Both like new. Used two years. Been stored inside since. \$4,500.00. Ted 401-842-8165

AD#10 (6/21) **FOR SALE** – Menhaden by the tote, barrel or vat. Pick up in Hull, MA only Call Eric @ 774-217-0501

AD#11 (4/21) **FOR SALE** – 6-bronze propeller shafts 1 1/2 x 14 feet long, some snapped at engine coupling or slight bend at prop end, \$150.00 each.8-Farr/Ecolite air filters-9.8around X 24 long part # 062891-001 fits turbo charged Cummins KT 1150M, \$100.00 each. 100-red 45 gallon drums-no covers **FREE**. 100- blue 30 gal. barrels-no covers **FREE**. 401-635-2143 Leave message.

AD#12 (3/21) **FOR SALE** – Gillnet Gear 24 Crosley lifter, roller/alum picking table & ss spreader bar. 80 Pingers 6- insulated vats 40-round fish nets 6.5,7,7.5 95 monk nets 10,11,12 Would like to sell as a package \$15,500. Text Bill 774-264-0083

AD#13 (4/21) **FOR SALE** - Twin disc PTO SL 211 em 3 \$1,500.00 ZF Gear Im 310 AL \$2,500.00 John 631-286-3335

AD#14 (6/21) **ATTENTION C-TRAP CUSTOMERS/GOT WOOD** New wooden conch traps for sale, many types, prices starting @ \$23.50ea for 20x20 all oak frames 3 wide pine lath sides. Will cut custom lobster traps/frames/runners/laths. Call 508-989-4762

#15 (3/21) **FOR SALE** – 50 - 48x 24x 15 traps. Like new/lightly fished \$50.00 each Text Bill 774-264-0083

AD#16 (4/21) **FOR SALE** – 7 Barrels' sort lay rope-set up in 18 pot trawls \$50.00/ barrel Call Pete 617-653-5012 Leave a message

AD#17 (4/21) **FOR SALE** - - Long Line Gear-2000 hooks -250/box \$500. 80- 3 Lobster Traps 22x15 Shrimp mesh heads w/hoop, 3 bricks, 80'rope -\$30. each 12 gallon Hydro-slave hydraulic oil tank. J.B 617-688-0914

AD#18 (2/21) **FOR SALE** – Bow rail for a 42 Osmand H+H Best Offer-32x34 4 blade Dyna Quad Prop \$2,000 34x33 4 blade Hi Torg prop \$1,500 Bob 781-767-4130

AD#19 (3/21) **FOR SALE** - 30 Novi-Lobster boat w/ a transferable coastal lobster permit Area 1. 800 trap allocation, lobster traps, ropes, buoys' etc. Will not split up sold as a package. \$50,000.00 BRO Call Brian 781-715-4732

AD#20 (3/21) **FOR SALE** - Fiberglass commercial work skiffs 10, 14 & 23, built to order. All skiffs can be widened. call/text Bob @ 978-979-1795 for info.

AD#21 (7/21) **FOR SALE** - 800 4ft double parlor lobster traps excellent condition. Built by Brooks Trap of Thomaston, Maine. Finest construction. Shrimp mesh triangle heads, cast iron ballast. 5 years + newer. \$50-\$75 per trap. Call/e-mail joel.w.marie@gmail.com – 781-581-0324

AD#22 (7/21) **FOR SALE** -Lobster trawl ground line 7/16 Everson – 14fathom between traps w/super haul ganglions + 2 end-lines \$150.00 Call/e-mail joel.w.marie@gmail.com – 781-581-0324

AD#23 (3/21) **LOOKING TO BUY** - Area 2 MA State Coastal lobster permit. Call Bryan @ 774-510-6090

AD#24 (3/21) **LOOKING FOR WORK** -I am looking for work as a deck hand on lobster boat out of Boston this summer. I have no experience, however, I am a fast learner and responsible. Contact: Max German-508-983-4272

AD#25 (4/21) **FOR SALE** - 1 roll of black 10-gauge repair wire 2 inch \$225. Mark @508-843-8614

AD#26 (4/21) **FOR SALE** - 3/8 Everson Rope 15 pot trawls, all spliced \$75/trawl 978-767-1711

AD#27 (4/21) **FOR SALE** - Bait Bags large heavy duty twine drawstring top & bottom approx: 2000, .50 cents a piece. Call Brian **no texts** 401-480-8554

AD#28 (4/21) **FOR SALE** - 100 3ft. lobster traps starboard haul 36x 22 1/2 x15 all green Riverdale wire/ shrimp mesh heads comes w/ rope 10 trap trawls no knots/fished last year. \$25.00 each Call Brian 774-218-4701

AD#29 (8/21) **FOR SALE** - 100 4 double parlor traps. Like new. Most fished for just a few months. Right hand, haul parlor. Ergo block ballast. Plastic skid plate with corner and edge protectors. \$80.00. Text/call 781-248-8361

AD#30 (8/21) **PLACE YOUR AD HERE!**

AD#31 (4/21) **FOR SALE** - 1977 Robert Rich 36 . John Deere 6076 300hp., ZF 280A 1.9:1 gear. Major overhaul 4 years ago. Rebuilt gunwales and glassed over wash rails and trunk cabin. Aluminum fuel tanks, new floor framing, transom cut out framed in stainless, IPE deck (black ironwood). Asking \$35,000 Call 781-534-3214

AD#32 (4/21) **FOR SALE** - 85 Offshore traps 48\*25\*17 -four poured cement weights,3 plastic runners, doors are 2 piece, open from center, very heavy 10 gauge, double wire hauling end,\$45 each 508-496-5626

AD#33 (4/21) **FOR SALE** - Ritchie Power damp compass SS 5000 almost new, Racor fuel filter 900 FH, Racor fuel filter 900 FG, Bronze dual ram steering quadrant, Freeman Oval Hatch 15 x 23 opening +/-, Sendure Heat exchanger 3 x 25 w/ 2in npt ports, SS Long line rail roller and ss crucifier, SS mast base Call Mike @978-745-6182

AD#34 (5/21) **HELP WANTED** - Hull, Ma Looking for a crew lobstering on the weekends and menhaden seining Monday-Friday call or text 774-217-0501

AD#35 (5/21) **FOR SALE** - 150 Friendship Traps for sale-36 x 24 x 14 all in good shape with shark head and ring head – \$26 each” Kevin 508-951-6400

AD#36 (6/21) **FOR SALE** - 500 wood lathe conch pots cemented & bridled w/ figure eight spinners. Ready to fish \$17.00 ea. Call 401-635-2143



**Bottom Line**  
Super 46 Wesmac  
C18 CAT



# WHEN YOUR ENGINE MEANS BUSINESS, MILTON CAT MEANS MORE.

Milton CAT is the Northeast and upstate New York Caterpillar dealer. Our complete range of marine power systems solutions is backed by a team with exceptional knowledge and experience.

- More engine choices.
- More fully equipped and staffed locations.
- More support for your commercial fishing vessel, ferry, tug, or pleasure craft.
- More ordering and delivery options for unparalleled part availability.

**Contact:**

Kevin Hampson, 508-634-5503, [Kevin\\_Hampson@miltoncat.com](mailto:Kevin_Hampson@miltoncat.com)





Massachusetts Lobstermen's Association  
8 Otis Place  
Scituate, MA 02066

PRSR STD  
U.S. POSTAGE  
PAID  
Permit 137  
New England Newspapers, Inc.



**Stock and Custom-Built Traps  
Lobster and Specialty Traps  
Aquaculture Supplies  
Huge Inventory of Commercial  
Fishing Supplies  
Four Locations in Maine**



**BROOKSTRAPMILL.COM  
(800) 426-4526**