



MASSACHUSETTS LOBSTERMEN'S ASSOCIATION



**JOIN TODAY and
show your support**

A LEADING Commercial Fishing Industry Association in New England

JANUARY 2020 NEWSPAPER • WWW.LOBSTERMEN.COM



New England
Fishery Management
Council

NEFMC

PG 13



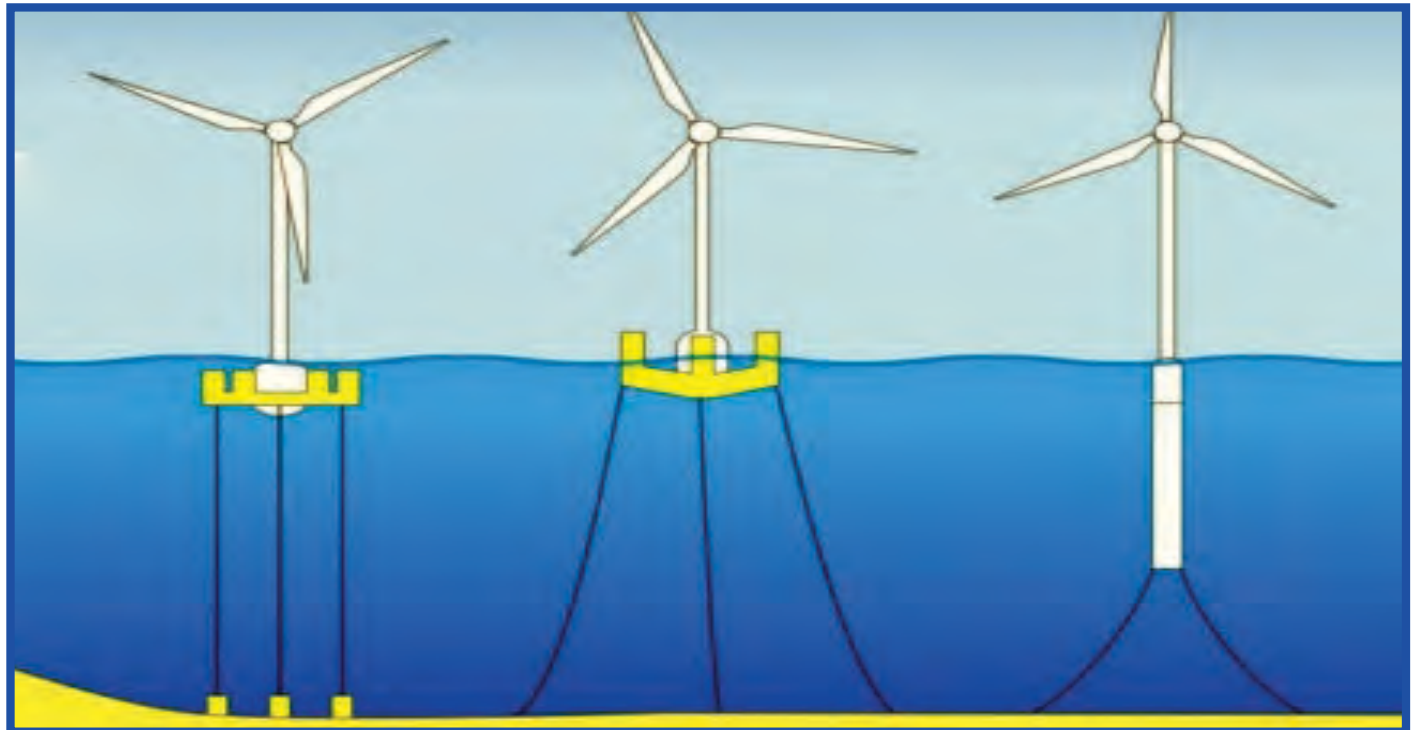
Conn. And Offshore Wind

PG 32



NOAA

PG 42



Offshore Wind in the Gulf of Maine

On December 12th the Bureau of Ocean and Energy Management (BOEM) held the Renewable Energy Task Forces which is comprised of intergovernmental groups. The Task force members are limited to Federal officials and elected state, local, and tribal officials, or designated member representatives to learn about the lengthy process to develop offshore wind in the Gulf of Maine.

This meeting was standing room only with several hundred interested parties from the public in attendance. Massachusetts Lobstermen's Association (MLA), Executive Director, Beth Casoni, was in attendance and was able to give public comment on the limited data sets for the lobster industry when it comes to a spatial resolution. The lobster industry does not leave a footprint on a chart unless the

YOU CAN NOW FOLLOW THE MLA ON THE FOLLOWING SOCIAL MEDIAS



FACEBOOK

www.facebook.com/mass.lobstermensassoc

If we are not already friends on FB and you want to be please send a message as we are at the 5000 limit and we will always make room for MLA members.



TWITTER

www.twitter.com/masslobstermens

If you tweet and want to follow the MLA this is a great way to stay up to date with all kinds of fisheries related news.



YOUTUBE

<http://www.youtube.com/user/lobsterdiva>

If you have any videos of fishing you would like to share please send them along. The MLA this has the camera rolling with all kinds of fisheries related news videos. Take a look!



PINTREST

<http://pinterest.com/masslobsters/>

Yes, now the MLA is Pinning to the wall! Take a look at Pintrest—this is the latest and hottest social media out there for sharing information. We Book, Tweet, Tube and now Pin!



Massachusetts Lobstermen's Association App now available

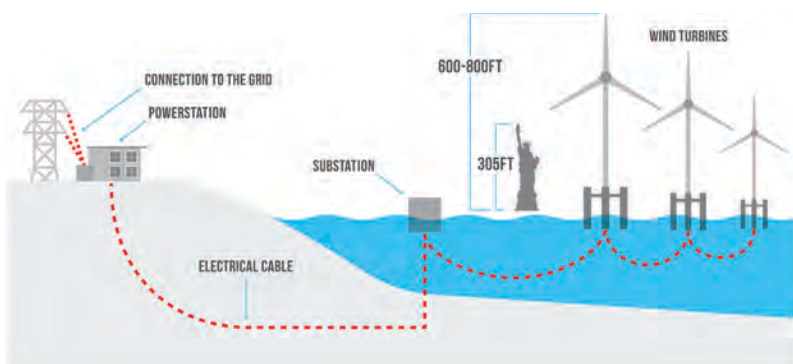
Yes, now the MLA has an app for Apple I Phones and I Pads for FREE. When searching your app store spell MLA out. Keep up to date with all of the latest industry issues and other great tools. We Book, Tweet, Tube, Pin and now we have an App to keep you connected!



Massachusetts Lobstermen's Association App now available

Yes, now the MLA has an app for Android Phones and Tablets for FREE. When searching your app store spell MLA out. Keep up to date with all of the latest industry issues and other great tools. We Book, Tweet, Tube, Pin and now we have an App to keep you connected!

COVER STORY



individual permit holder holds a multispecies permit. How is BOEM going to site the lease areas without all the data necessary to make informed decisions?

There were a lot of presentations given by various agencies and organizations on how they are handling offshore wind. Terry Alexander a Board member of the Responsible Offshore Development Alliance (RODA) gave a presentation on the commercial fisheries in the Gulf of Maine and indicated the many conflicts that these structures would have with existing users.

Given the depths of the Gulf of Maine and the limits for the use of mono-pilings of jacketed structures

the likely preferred structure to use would be floating platforms the windmills and substations would be sitting upon. With an estimated 8:1 ratio each structure would have a footprint of 1 square mile, with all the cable and inter-array cabling this would be a no go zone for any fishing. While these floating structures are not yet commercially viable today, don't blink because they will be sooner than later.

If you are a federally permitted fishermen and fish in the Gulf of Maine please pay attention to this process as it will appear to be a slow going process and then all of a sudden, "BAM" its happening! Remember, the Southern New England MA/RI wind lease area has been in "process" for over 15 years now and there are still no structures in federal waters.

On December 12th the MLA sent a formal request to Massachusetts Coastal Zone Management to expand the MA fisheries Working Group that has been meeting for 15 years now to a north shore location. If you are interested in participating on this Working Group once it is formed please let us know – 781-545-6984 xt.1. We look forward to hearing from you.



Published by the Mass. Lobstermen's Assoc., Inc.
8 Otis Place
Scituate, MA 02066

Published monthly

Mailed to all paid members of the Massachusetts Lobstermen's Association

Newsletter Departments

Editor, Industry News, Notice Section, Editorial, Blog, Industry News, Promotions, Layout, Advertising: Beth Casoni — Executive Director

Billing: Elaine Kracov

Buy Sell Swap: Tracey Abboud

Newsletter Advertising Rates

The MLA Newsletter is published monthly

(Please note that all pre-paid ads for last year will be honored)

\$35 — ¼ Page Ad

\$65 — ½ Page Ad

\$95 — Full Page Ad

Color Ads — + \$25 per ad

"NEW" MLA LOBSTER GEAR

Call 781-545-6984 or visit www.lobstermen.com



Working to maintain a sustainable resource in the marine ecosystem.



Individuals can help this cause by becoming a Supporting Member.

8 Otis Place
Scituate, MA 02066
781.545.6984



For more information, visit our website www.lobstermen.com



SPONSOR LIST

THE FOLLOWING COMPANIES ARE PROUD SUPPORTING MLA MEMBERS. WE ENCOURAGE OUR MEMBERS TO PATRONIZE THEM. IF YOUR COMPANY IS NOT LISTED AND YOU WOULD LIKE IT TO BE, PLEASE CONTACT TRACEY ABOUD AT 781-545-6984 ext. 2

ALIVE & KICKING LOBSTER
LOUIS MASTRANGELO
CAMBRIDGE, MA
617-876-0451

ARK BAIT
FRESH/SALTED
MENHADEN BAIT
508-678-4161

BAR HARBOR LOBSTER
JEFF HAZELL
ORLANDO, FL
407-851-4001

BESSY BAIT
SCOOTER BAKER
SEABROOK, NH
603-300-2849

BOB LOBSTER (FISH MKT & LOBSTER POUND)
ROBERT HARTIGAN
PLUM ISLAND, MA
978-465-7100

BOSTON LOBSTER
Lobster Dealer
NEIL ZARELLA
617-464-1500
www.bostonlobstercompany.com

BOSTON SWORD & TUNA
STEPHEN SCOLA
Boston, MA
617.946.9850

BROOKS TRAP MILL
STEPHEN BROOKS
THOMASTON, ME
207-354-8763
stephen@brookstrapmill.com

CAPE ANN MARINE
SALES & SERVICE
978-283-0806
CapeAnnMarina.com

C-TRAP
MATT BORGES
MATTAPOISETT, MA
508-758-2470

CAPE COD CLAM & SEAFOOD
SO. CHATHAM
CURT COLLINS
508-246-4366

CAPE CODDER MARINE, LLC
BOB DOBIAS
Swampscott, MA
978-979-1795
www.capecodderboats.com

CAPE SEAFOODS BAIT DEALER
GERRY O'NEIL
GLOUCESTER
978-479-4642

CAPE FISHERMEN SUPPLY
DAVE LIBBY
CHATHAM, MA
508-945-3501

CAPE TIP SEAFOODS
CHRIS KING
PROVINCETOWN
508-487-0259

CAPE TIP SEAFOODS
CHRIS KING
ORLEANS
508-255-7221

CAPTAIN MARDEN'S SEAFOODS
WELLESLEY, MA
KIM MARDEN
781-329-7007
781-329-0792
www.captainmardens.com

CHERRY ST. FISH MARKET
DANVERS, MA
DARRYL PARKER
978-777-3449

CHRIS ELECTRONICS CORP.
255 MacArthur Drive
New Bedford, MA
508-994-8257

COASTAL HYDRAULICS
RICH TUCKER
SEABROOK, NH
603-474-1914
www.coastalhyd.com
sales@coastalhyd.com

COHASETT LOBSTER POUND
TOMMY ALIOTO
COHASETT, MA
781-383-1551

COMMERCIAL MARINE ELEC
DANIEL HODGKINS
SCITUATE, MA
781-545-7883
www.comercialmarine.net

WILL COLLINS
Marine Sales Manager
Cummins Sales/Service
Office 781-801-1772
Cell 401-339-4004
will.collins@cummins.com

DOLE & BAILEY
SPENCER MONTGOMERY
WOBURN, MA
781-935-1234
www.doleandbailey.com
www.northeastoceans.com

EAST COAST SEAFOOD
LYNN, MA
SPIROS TOURKAKIS
781-593-1737

ELECTRA-DYNE CO INC.
JUDY MACCAFERRI
PLYMOUTH, MA
508-746-3270

FARM CREDIT EAST
MIDDLEBORO, MA
508-946-4455

FISHER AIR FASTENERS
ED & CHRIS FISHER
PEMBROKE, MA
781-826-2522

FISHERMEN SERVICES
Donna Chepren & Elaine
Kracov
781-545-5073
www.fishermenservices.com

FRIENDSHIP TRAP CO.
CHRIS ANDERSON
FRIENDSHIP, ME
800-451-1200

GRUNDENS USA
MICHAEL JACKSON
POULSBO, WA
360-779-4439
www.grundens.com

HAMILTON MARINE INC.
800-639-2715
Hamiltonmarine.com

JAMES HOOK & CO.
ED HOOK JR.
BOSTON, MA
617-423-5500

INDUSTRIAL MARINE MKTG.
ROGER SMITH
WAKEFIELD, RI
401-782-4412

HERCULES
JOHN REARDON
NEW BEDFORD MA
508-993-0010

JOLIN LOBSTER
MANCHESTER, MA
GEOFFREY SONES
TEL 978-526-7954 / FAX
978-526-7609

JOHN M. KARBOTT CUSTOM WOODEN BOAT BUILDING & REPAIR
PLYMOUTH, MA
508-224-3709
www.by-the-sea.com/
karbottboatbuilding

KETCHAM TRAPS
ROBERT KETCHAM
NEW BEDFORD, MA
508-997-4787

KINGFISHER TRAP
CARL HOWARD
DENNIS, MA
508-385-5968

KING LOBSTERS
D.J. KING
BRANFORD, CT
203-488-6926

KING MARINE LLC
CAPT. GEORRDIE KING
MARINE SURVEYOR
207-337-8706
kinggeordie@comcast.net

LOBSTER CRUISES
PAUL QUINTAL
PLYMOUTH, MA
508-746-5342

LOBSTER TRAP FISH MARKET
MONUMET BEACH, MA
508-759-6400
WWW.LOBSSTERTRAP.COM

LOBSTER TRAP CO.
LOGAN CLARK
BOURNE, MA
508-759-4928
www.lobstertrap.com

LYNCH LOBSTER CO
JOHN LYNCH
BEVERLY, MA
978-921-8088

MANCHESTER LOBSTER
TONY REZZA
MANCHESTER, MA
508-932-0990

MARINE PROPELLER SERVICE
MIKE VALM
NEW BEDFORD, MA
508-979-8000

MARINE HYDRAULIC ENGINEERING
ROBERT CROWE
ROCKLAND, ME
207-594-9525
1-800-747-7550

MILTON CAT POWER SYSTEMS
KEVIN HAMPSON
MILFORD MA 01757
508-207-8542

MORTILLARO LOBSTER, INC.
VINCE MORTILLARO
GLOUCESTER, MA
798-281-0959

SPONSORS *Continued from page 3*

NAUSET FISH & LOBSTER POOL
ORLEANS, MA
REBECCA HARRISON
508-255-1019

NEW ENGLAND BOATING
508-789-6708
tom@lighthousemags.com

NEW ENGLAND CRAB COMPANY
BOSTON, MA
MARK NEWBERT
617-464-1999

N.E. MARINE & INDUSTRIAL INC.
MIKE RICHARDSON (NH)
603-436-2836
781-834-9301 Info@
newenglandmarine.com

THE NET RESULT
LOUIS LARSEN
MARTHA'S VINEYARD
Mvseafood@vineyard.net

NEW ENGLAND PROPELLER
RON PECK
PLYMOUTH, MA
800-635-9504
neprop@aol.com

NORTH ATLANTIC POWER
TWIN DISC ~ SAM PROFIO
EXETER, NH
sprofio@glpower.com
603-418-0470

NORTHEAST TRAP LLC
Michael Christian / Peter Christian
Douglas, Ma
508.294.6999
northeasttrap@verizon.net

OCEAN STATE LOBSTER
KEVIN BATES
NARRAGANSETT, RI
401-782-3500

PENDER MARINE SERVICES
PAUL PENDER
WESTWOOD, MA
617-240-1622

RFP LOBSTER BAIT
DICK PERENTZ
774-248-0292

RIVERDALE MILLS
NORTHBRIDGE, MA
508-234-8715

ROWAND FISHERIES
DANA ROWAND
2 CABOT ST.
BEVERLY MA 01915
978-927-1871

ROSES MARINE
MARTY BOLCOME
GLOUCESTER, MA
877-283-3334
www.rosesmarine.com

SANDWICH SHIP SUPPLY
DON SPRING
SANDWICH, MA
508-888-0200

SEA CLIFF LOBSTER
FRANK COLLINS
MANOMET, MA
508-224-5700

SILVER KEY, INC.
WESTPORT, MA
CHUCK HUSKINS
508-673-3310

SPURS MARINE Mfg
PABLO SOSA
FORT LAUDERDALE, FL
800-824-5372

SUPERIOR LOBSTER
DARRYL DURNFORD
HUMAROCK, MA
774-773-5048

W.B. VAN DUZER CO.
WILLIAN VAN DUZER
DUXBURY, MA
781-585-7664

TWO COUSINS FISH MARKET
BRIAN O'DONOHUE
FREEPORT, NY
516-379-5065

Wellfleet Shellfish Co.
Alex Hay
508-255-5300
sales@wellfleetshell.com

WINDWARD POWER SYSTEMS
JIM & NATE TYNAN
FAIRHAVEN, MA 774-992-0059
www.windwardpower.com

WOOD'S SEAFOOD
PLYMOUTH, MA 02360
508-746-0261

YANKEE FISHERMEN'S CO-OP.
SEABROOK, NH
603-474-9850



The Massachusetts Lobstermen's Association would like to welcome the following new members to the Association. Your Association will continue its efforts on your behalf to conserve the resource, protect your livelihood, keep you informed, promote the industry and provide you with increasing benefits as they are developed. MLA stands ready to help you in anyway, at anytime — just let us know how!

Safe on the water and good fishing!

New Members	F/V Name	Port
Michael Leach	F/V Show Boat	Barnegat Light NJ
Josh Neal	F/V Lady Irene	Chatham
Jaun D. Peralta Marinez	F/V Nauti Kat	Hampton NH
Jacob Cabral		Tiverton RI
Christopher Kennedy	F/V Kennedy	Provincetown

Wishing You
a New Year filled
with new Hope ,
new Joy &
new Beginnings.



Calendar of Events

JANUARY

MLA Membership Meeting will be held April 18th

1/1 Happy New Year! MLA and FISH offices are closed

1/20 Martin Luther King Day - MLA and FISH offices are closed

1/28-30 New England Fishery Management Council, Portsmouth Event Center, Portsmouth NH

FEBRUARY

2/4 -6 Atlantic State Marine Fisheries Commission, The Westin Crystal City, 1800 S.Eads Street, Arlington VA 22202

2/12 MLA Delegates meeting- Sons of Italy Hall 120 Quarry St Quincy, MA 02169 7:00pm

2/14 Happy Valentines Day! Don't forget your sweetheart!

2/17 Presidents Day! MLA and Fish offices are closed

Please check the MLA website for more meetings and events as they will be added

MARCH

3/18 MLA Delegates Meeting- Sons of Italy Hall 120 Quarry St Quincy, MA 02169 7:00pm

Please check the MLA website for more meetings and events as they will be added.



LIFERAFT SERVICES

MARINE SAFETY AND SURVIVAL EQUIPMENT

5% DISCOUNT ON SERVICE FOR MLA MEMBERS!

- LIFERAFT INSPECTIONS

- EPIRBs & PLBs

- SIGNALING DEVICES

- IMMERSION SUITS & PFDs

- PICKUP & DELIVERY



www.SURVIVALATSEA.com

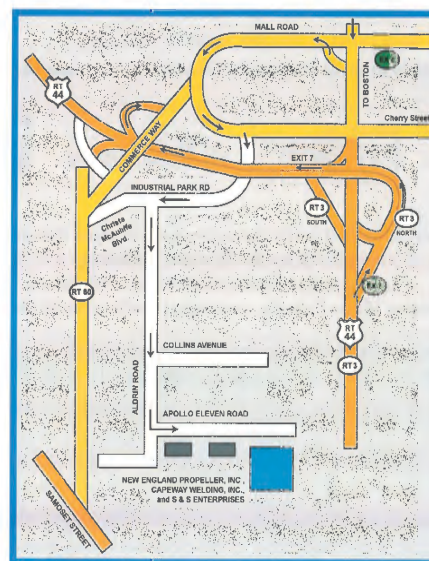
207.363.0220



NEW ENGLAND PROPELLER, INC

MARINE PROPELLER SPECIALISTS
TOLL FREE 1-800-635-9504

9 APOLLO ELEVEN ROAD • PLYMOUTH INDUSTRIAL PARK • PLYMOUTH, MA 02360
TEL (508) 747-6666 • FAX (508) 746-8804
WWW.NEPROP.COM • NEPROP@AOL.COM



CALL FOR DROP OFF LOCATIONS OUTSIDE OF PLYMOUTH AREA

NEW ENGLAND PROPELLER, INC
MARINE PROPELLER SPECIALISTS

M.L.A. COUPON

10% Off
Propeller Repairs

Any Size, Any Style • When You Need It Fast
Quality Affordable Repairs
Redeemable only at New England Propeller

NEW ENGLAND PROPELLER, INC
MARINE PROPELLER SPECIALISTS

M.L.A. COUPON

15% Off
Inboard Propellers Class 1 Hale M.R.I.
with Analysis Reports

15% Off
Dynamic Balancing

Redeemable only at New England Propeller



MLA Fishermen Services Corp.

Service Provider for MLA Non-Profit Boat Protection Cooperative Ltd.

MLA's #1 Commercial Boating Insurance Provider

- **Agreed Hull Value – Protection & Indemnity**
- **Crew Coverage - Extended Policy Limits - Chartering**
- **Marina Floaters - Multiple Fisheries & Deductibles**

Call 781-545-5073 for a free quote or

request a quote online at fishermenservices.com



As the HAULER TURNS



Happy New Year, may your 2020 year be full of health and prosperity. WOW, I can not believe it is two thousand and twenty, where does the time go? As I enter into my 12th year with the MLA I am still amazed how fast time has flown by and I still feel like I'm 39....well maybe now 51. I am also pleased to announce the arrival on my newest grandson Noah Joseph who arrived on 12/15/19 healthy and weighing in at 6lbs 3ozs, 19" long. This is what life is all about and I am truly grateful to be called "Grammy." I welcome 2020 with pep in my step and a heart full of joy.

As I sit back and reflect on 2019 which was nothing short of 12 a month marathon from; the countless conference calls, writing letters of comment, industry related events, fisheries management meetings, whale meetings, offshore wind meetings, environmental issue meetings and our own internal organization meetings all of equal importance we were there. I am

honored to be on the phone, at the table, and at the event for you so you can continue to work in the industry you love.

Furthermore, I really enjoy hearing from you about what you have going on in your area and that you appreciate all that the MLA is doing to help keep you on the water. Sometimes, I do get a call from an upset member and I do resolve whatever



the difference is and unfortunately, in most cases said individuals are not reading their monthly MLA publication.

The MLAs monthly newspaper is full of industry information so you can stay informed and current on all the pertinent fishing industry related issues. I have heard that you can lead a horse to water but you can't make

them drink, this is the same. If you are not reading this newspaper you are missing out on all the issues that will have an impact on your business, maybe not today but down the road and we want you to be informed so you can participate as the MLA does. If you have any topics you would like

me to write about or include in the MLA monthly newspaper please give me a call 781.545.6984 xt.1.

I really enjoy writing this blog every month and hearing from many of you, you do too. I used to say to Bill Adler when he would right his "Just a Thought" article.... "Do you have anymore thoughts left after 25 years?" and he would laugh and now here I am going into my 12th year and I wonder if I will ever run out of thoughts, highly unlikely with the never ending and reoccurring issues in the commercial fishing industry.

When I come into the MLA office, when I am not on the road, on the rails or in the air, I have the best laid out plan to get as much done as possible as scores of the issues are time sensitive and need attention more frequently than not. I keep asking Santa for a clone and still haven't gotten one as of yet! At times I get so frustrated when these issues are larger than a whale and blowing in like a hurricane, I seek solace in knowing that since 1963 the MLA has and will continue to write letters of comment, be on the phone, at the table, and at industry events for you.

Wishing you and your family a Happy New Year, *Beth Casoni*

Massachusetts Lobstermen's Association
 8 Otis Place
 Scituate, MA 02066

Office 781-545-6984
 Fax 781-545-7837
www.lobstermen.com

MEMBERSHIP APPLICATION

TYPE OF MEMBERSHIP	Full Voting	Associate	Business
	\$150 Annual Dues	\$150 Annual Dues	\$250 Annual Dues

*To qualify for a Full Regular Membership, you **MUST** (1) hold a valid Mass. Commercial Lobster License, (2) reside in Massachusetts, (3) be sponsored by either two Regular Members or one Delegate, and (4) send in a copy of your lobster license with this application.

Sponsors:

#1 Name _____ [] Delegate [] Regular Member

#2 Name _____ [] Delegate [] Regular Member

Name

Business Name * Business members will now be listed in 2"x2" ad in the new MLA business section at the front of the monthly newspaper, a 2"x2" ad linked to your website will be added to the MLA website, preferential ad location selection in the newspaper and early registration and booth preferences for the MLA Annual Weekend event.

Address

City/Town

State

Zip Code

Home Phone

Cell Phone

Work Phone

Fax Number

Email Address

Website

Vessel Name

Homeport

Permit ID#

Type of Permit

Check here if you would like Hull and P&I Insurance information sent to you

Payment options – Cash, Check, Master Card or Visa

Credit Card Number

Exp. Date

3 digit security#

Zip code

Signature _____ **Date:** ____ / ____ / ____

WE DELIVER FRESH LOBSTER BAIT

INCLUDING:

HERRING

POGIES

MACKEREL

RED FISH

SKINS

BLUEFISH

CHUM

SALMON
HEADS



FRESH, SALTED, AND QUICK FROZEN BAIT

Barrel Head Bait

WE SELL SALT!

For More Information:

To Place An Order:

Mark Flight

mark@barrelheadbait.com

The Bait Line:

857-200-2129

Or Fax:

617-561-8471

REPOWER your boat with a new Cummins diesel engine.



QSB6.7
250-480 HP



QSC8.3
500 HP



QSL9
290-410 HP



QSM11
610 HP

Contact your local Cummins distributor or dealer for complete program details.

Steve Nadeau - MA, ME, RI and Upstate NY
207-510-2247 | steve.nadeau@cummins.com

Will Collins - MA, RI, CT and NY
781-801-1772 | will.collins@cummins.com

NETWORK OF MARINE ENGINE DEALERS THROUGHOUT NEW ENGLAND

Billings Diesel and Marine
Stonington, ME
(207) 367-2328

Great Bay Marine
Newington, NH
603-436-5299

James Rich Boat Yard
Southwest Harbor, ME
(207) 244-3208

Niemiec Marine
New Bedford, MA
(508) 997-7390

Brewers' Plymouth Marine
Plymouth, MA
(508) 746-4500

Gorham's Diesel Repair, Inc.
Braintree, MA
(781) 843-0816

Journey's End Marina
Rockland, ME
(207) 594-4444

Point Judith Marina
Wakefield, RI
(401) 789-7189

Brewer Greenwich Bay
Warwick, RI
(401) 884-0544

Hinckley Yacht Services
Portsmouth, RI
(401) 683-7100

**Kennedy Marine
Engineering & Fabrication**
Steuben, ME
(207) 546-7139

Port Niantic Inc
Niantic (East Lyme), CT
(860) 739-2155

Bristol Marine
Bristol, RI
(401) 253-2200

Hinckley Yacht Services
Southwest Harbor, ME
(207) 244-5572

Kingman Yacht Center
Cataumet, MA
(508) 563-7136

**Rhode Island
Engine Co., Inc.**
Narragansett, RI
(401) 789-1021

Cape Ann Marine
Gloucester, MA
(978) 283-2116

Hodgdon Yacht Services
Southport, ME
(207) 633-2970

**MacDougall's Cape Cod
Marine Service**
Falmouth, MA
(508) 548-3146

Russ Marine Service
Peabody, MA
(978) 532-3373

Casco Bay Diesel
Portland, ME
(207) 878-9377

Hyannis Marina
Hyannis, MA
(508) 775-5662

Merri-Mar Yacht Basin
Newburyport, MA
(978) 465-3022

Great Island Boat Yard
Harpwell, ME
207-729-1639

Independent Field Service
Dewitt, NY
(315) 481-4077

salesandservice.cummins.com



Atlantic States Marine Fisheries Commission

NEWS RELEASE

Sustainable and Cooperative Management of Atlantic Coastal Fisheries

FOR IMMEDIATE RELEASE
November 25, 2019

PRESS CONTACT: Tina Berger
703.842.0740

ASMFC Seeks Proposals for Regional Pilot Projects in Support of Sustainable Aquaculture: Proposals Due January 15, 2020

Arlington, VA –The Atlantic States Marine Fisheries Commission (Commission), in partnership with the NOAA Fisheries Office of Aquaculture, is issuing a Request for Proposals (RFP), seeking marine aquaculture pilot projects focused on sustainable aquatic farming techniques and regional business practices to grow U.S. domestic seafood. The geographic scope of the proposed projects is the U.S. East Coast states from Maine to Florida. The primary location of the proposed projects must be in the marine/estuarine environment. Examples of the types of pilot projects being sought through the RFP follow:

- Research and development related to the production and distribution of shellfish seed stock.
- Finfish, shellfish (other than oyster*), and seaweed farming systems, especially for those species new to aquaculture in the region or that use novel production systems.
- Identification and development of Aquaculture Development Zones with pre-planning and pre-permitting for a range of aquaculture activities.
- Resolution of issues (e.g., enforcement, water quality, public trust concerns or impacts) related to open water finfish farming in state waters.
- Business incubators
- Regional market and economic impact studies

*Note: Proposals for oyster projects were already requested in a separate RFP (2019 Request Regional Oyster Aquaculture Research Consortia)

NOAA Fisheries, through the Commission, is making available \$625,000 for the funding period of July 1, 2020 to June 30, 2021. Individual proposals should not exceed \$200,000 or be less than \$50,000. It is anticipated that approximately 4-6 projects will be funded. Eligible applicants include researchers at U.S. academic institutions, research laboratories, for-profit companies/firms, nonprofits, and state agencies. Applicants seeking to apply to the RFP must submit, as a single file, an electronic proposal by email no later than 5:00 p.m. EST on January 15, 2020. Please see the RFP for complete proposal details, qualifying requirements, and submission instructions. The RFP is available at http://www.asmfc.org/files/RFPs/ASMFC2020PilotAquacultureRFP_Nov2019.pdf.

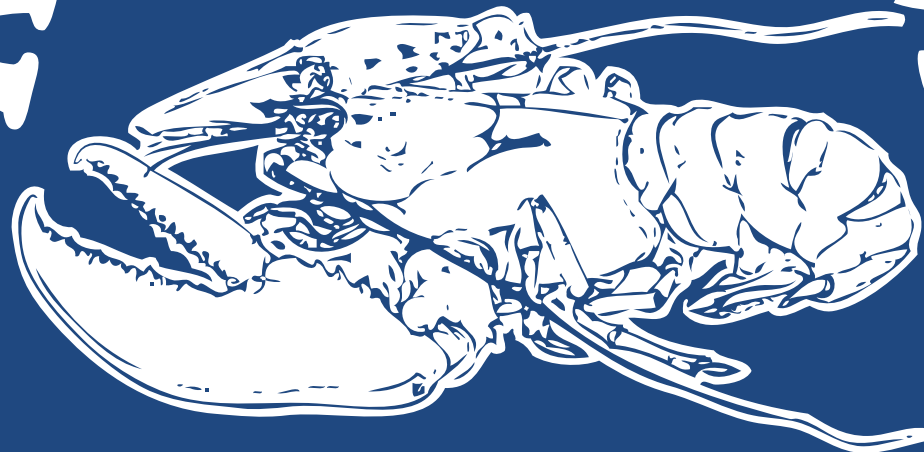
The Gulf and Pacific States Marine Fisheries Commissions have also issued similar RFPs seeking proposals relevant to their respective regions. For more information, please contact Dr. Louis Daniel at ldaniel@asmfc.org or 252.342.1478.

The Atlantic States Marine Fisheries Commission was formed by the 15 Atlantic coastal states in 1942 for the promotion and protection of coastal fishery resources. The Commission serves as a deliberative body of the Atlantic coastal states, coordinating the conservation and management of nearshore fishery resources, including marine, shell and diadromous species.

Rope

Totes

KETCHAM



Clips

Buoys

TRAPS

Tools

Traps

111 Myrtle Street
New Bedford, MA 02740

 @ketchamsupply

www.ketchamsupply.com
info@ketchamsupply.com

508.997.4787



New England Fishery Management Council

FOR IMMEDIATE RELEASE
December 5, 2019

PRESS CONTACT: Janice Plante
(607) 592-4817, jplante@nefmc.org

Council Receives Skate, Herring, Dogfish, and EBFM Updates

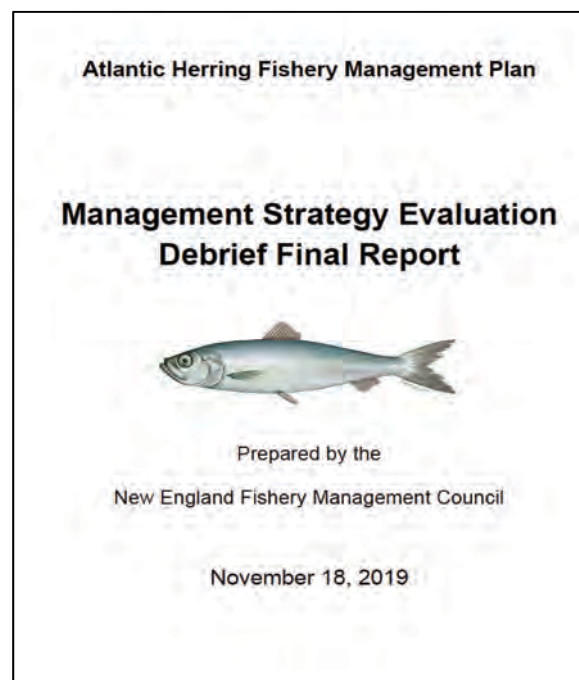
The New England Fishery Management Council began its December 3-5, 2019 meeting in Newport, RI by receiving numerous reports and updates from its own committees, as well as partner agencies. Here are a few highlights.

SKATES: The Council’s Skate Committee, Plan Development Team (PDT), and Advisory Panel (AP) continue to work on Amendment 5 to the Northeast Skate Complex Fishery Management Plan (FMP). The amendment is being developed to consider creating limited access permits for the skate wing and/or skate bait fisheries. The PDT is working to provide data to help the the Skate Committee and AP better understand the fisheries and fishermen using the skate resource. In other skate news, the Council was informed that:

- The [2019 Skate Annual Monitoring Report](#), which covers fishing year 2018, had been finalized; and
- [Framework Adjustment 8](#) to the FMP, which contains 2020-2021 specifications for the skate wing and bait fisheries, appeared to be on schedule for approval and implementation by the National Marine Fisheries Service (NMFS/NOAA Fisheries) in time for the May 1 start of the 2020 fishing year.

ATLANTIC HERRING: The Council discussed two items related to herring.

- The first pertained to Atlantic herring spawning activity on Georges Bank. The Council contracted the Gulf of Maine Research Institute to develop a discussion document that pulled together all pertinent historical and current scientific research plus related information about spawning activity on Georges Bank. The Council was briefed on preliminary findings at its September meeting, at which time it [initiated an action](#) to address offshore spawning of Atlantic herring. Now that the [final discussion document](#) is complete, work on the action will continue.
- The Council also received a summary of the [final report](#) for the Management Strategy Evaluation (MSE) Debrief that reviewed the process used to develop a range of alternatives for an acceptable biological catch (ABC) control rule for Amendment 8 to the Atlantic Herring FMP. The





New England Fishery Management Council

Council used MSE to provide greater upfront discussion of the control rule's objectives and to weigh tradeoffs between the alternatives. Since this was the first time the Council used MSE, it took a step back to review benefits and/or drawbacks of the process and cover "lessons learned." The debrief addressed questions such as:

- Was the purpose and need clear? Was the education process about MSE sufficient?
- Did stakeholders find utility in using MSE in balancing tradeoffs? And, among other questions,
- How did the MSE process compare to the Council's standard practice for developing alternatives?

Stakeholder responses to all of the question and additional input obtained from outside of the debrief process are contained in the final report.

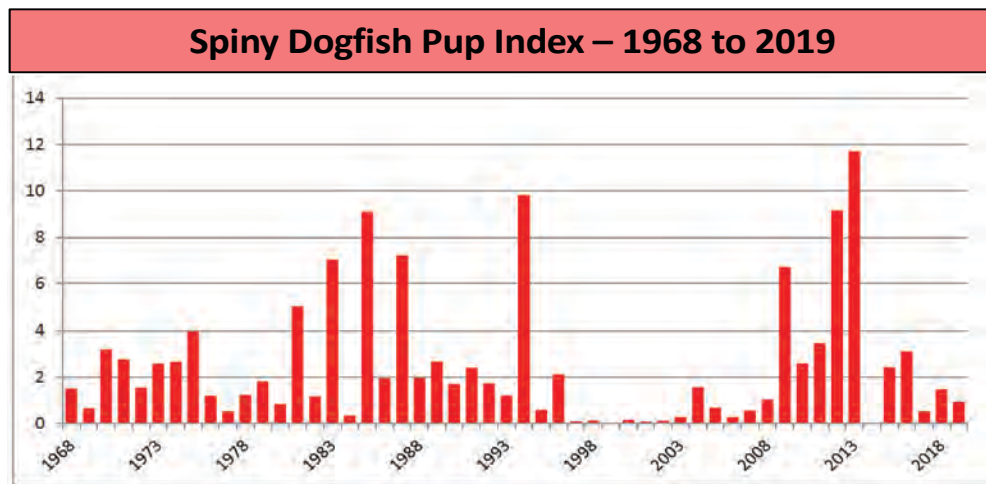
SPINY DOGFISH: The New England Council manages spiny dogfish jointly with the Mid-Atlantic Council. In 2018, the Councils approved fishing year (FY) 2019-2021 specifications for the fishery, which included the following commercial quotas:

- FY 2019 – 20,522,832 pounds
- FY 2020 – 23,194,835 pounds
- FY 2021 – 27,421,096 pounds

The 2019 fishery is ongoing. In October, the Mid-Atlantic Council reviewed 2020 specifications after considering input from its Scientific and Statistical

Committee, the joint Spiny Dogfish Advisory Panel, and the Spiny Dogfish Monitoring Committee. The New England Council also reviewed 2020 specifications during its December meeting here in Newport. Given the current status of the stock, coupled with feedback received from the various advisory bodies, both Councils made no changes to the specifications. As such, the commercial quota will increase 13% in 2020 over the 2019 level. The Councils also made no changes to the 6,000-pound federal trip limit. Stock status wise, pup production remains low, but given that dogfish landings have been below the quota since 2012 and the market for dogfish at present is fairly weak, the Councils determined that status quo was warranted. Additional materials are available at [spiny dogfish](#) and [MAFMC](#).

ECOSYSTEM-BASED FISHERY MANAGEMENT (EBFM) – The Council is continuing to explore EBFM. Up to now, the Council's work has focused on developing a draft example Fishery Ecosystem Plan ([eFEP](#)) for Georges Bank, as well as establishing a Management Strategy Evaluation [Steering Committee](#) to help



Above, estimated swept area biomass (in metric tons) of total pups, defined as spiny dogfish less than or equal to 35 centimeters in length, captured in the Northeast Fisheries Science Center's spring bottom trawl survey from 1968 through 2019. – Northeast Fisheries Science Center graphic



New England Fishery Management Council

determine how to best focus public input on EBFM overall and on the eFEP. In September, the Council asked the Steering Committee to:

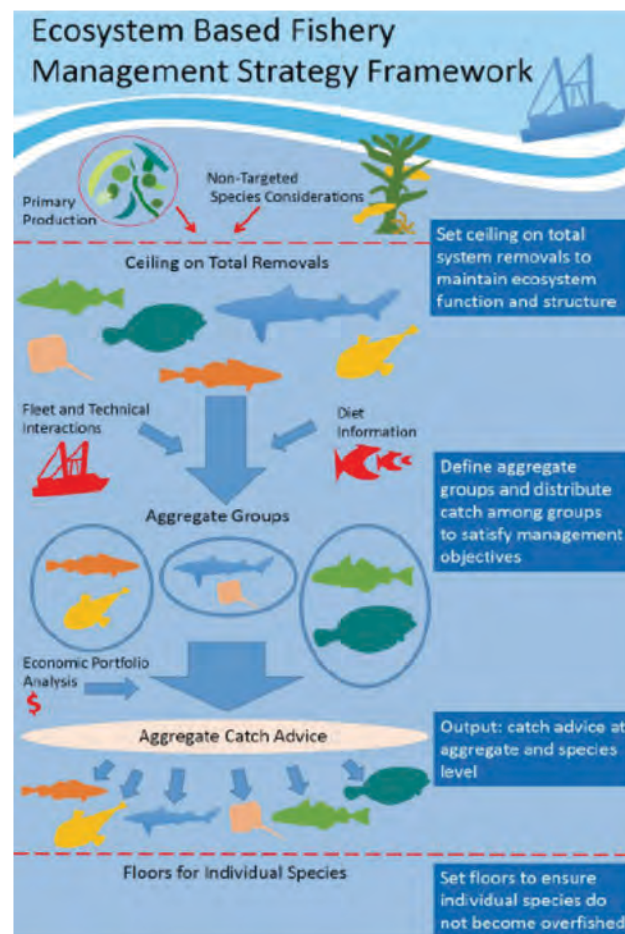
- Advise the Council on how to develop a “less technical and publicly digestible document” with examples that focus on a core EBFM approach; and
- Offer suggestions for how to structure and conduct public information workshops that will bring together stakeholders, gather feedback, address questions, and identify people who are willing to engage in an MSE process.

The MSE Steering Committee then met three times and formulated a package of [recommendations](#) for how to proceed. At this December meeting, the Council approved the recommendations and directed the EBFM Committee, the EBFM PDT, and Council staff to use the list to develop the desired materials and a plan for public information workshops that focus on EBFM for the Georges Bank ecosystem. The Council intends to engage the services of a science communicator and an outreach facilitator to help with the effort.

Additional Reports on December 3 in Newport, RI

The Council also:

- Received a report on the 41st Annual Meeting of the Northwest Atlantic Fisheries Organization ([NAFO](#)), which met in September in Bordeaux, France and was attended by three Council members;
- Supported the Atlantic States Marine Fisheries Commission’s determination that Virginia is [out of compliance](#) with the Atlantic Menhaden Interstate FMP;
- Received an overview of the Northeast Trawl Advisory Panel’s [November](#) meeting;
- Reviewed NMFS’s Draft National Standard 1 Technical Guidance for Carry-Over and Phase-In Provisions within ABC Control Rules and approved [draft Council comments](#);
- Received a presentation from the NOAA Office of Law Enforcement on [groundfish misreporting](#) in the Carlos Rafael criminal case and a presentation from the Coast Guard on broader misreporting issues and implications; and
- Reviewed NMFS’s Modernizing Recreational Fisheries Management Act of 2018 Report to Congress – the [Modern Fish Act](#) – and approved draft Council comments.



The flowchart above represents the “core approach” to Ecosystem-Based Fishery Management.

– Amanda Hart, UMass Dartmouth graphic



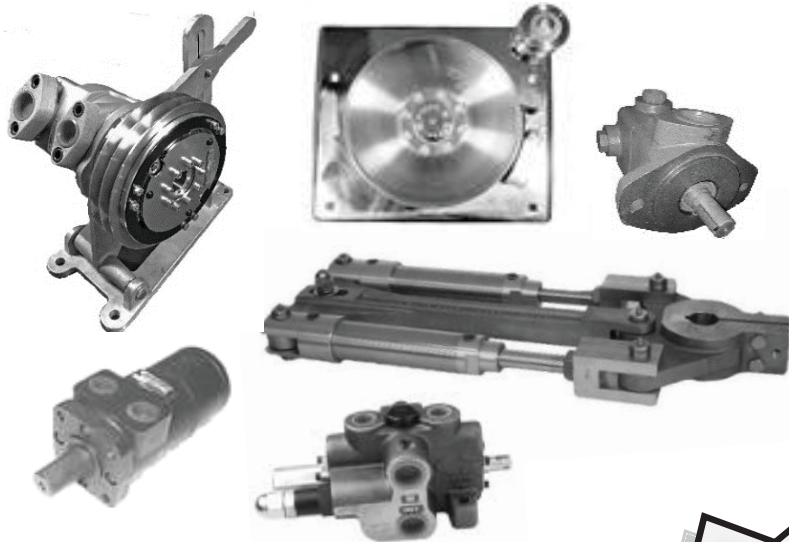
Rose Marine

Gloucester, MASS www.rosesmarine.com

877-283-3334

Sales and Service of Hydraulic Components

We will customize a hydraulic hauling or power-steering system to fit your exact needs.

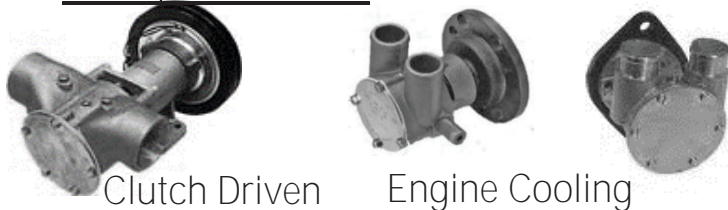


Authorized SEASTAR Solutions (FORMERLY Teleflex) Repair Facility for the Northeastern U.S.



Same-Day Service Available on most Emergency Repairs!

Complete Line of **Johnson Pump**® Pumps & Parts



Clutch Driven

Engine Cooling



Complete Line of **PACER** Pumps & Parts

Hydraulic Driven
Sized to the flow rate to fit your boat.

PACKLESS SEALING SYSTEM
SHAFT SEAL

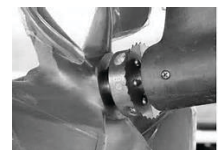


Stocking Distributor

Combination Shaft Zinc & Line Cutters



Shaft Sizes
3/4" to 2-1/4"





Rose Marine

Gloucester, MASS www.rosesmarine.com

877-283-3334

Aqualoy Stainless Propeller Shafts & Accessories



Largest stock of **Aqualoy** Stainless Prop Shafting on the East Coast
With *Emergency* turn-around time available.

Call or e-mail Peter Tetrault for a price on your next shaft.
peter.tetrault@rosesoil.net



Quality Oil Coolers
Made in the U.S.A.

- All Seamless Tubing
- High pressure available
- 90/10 copper-nickel
- 2" to 5" Dia. Body in stock



Cablecraft
PUSH-PULL CONTROLS

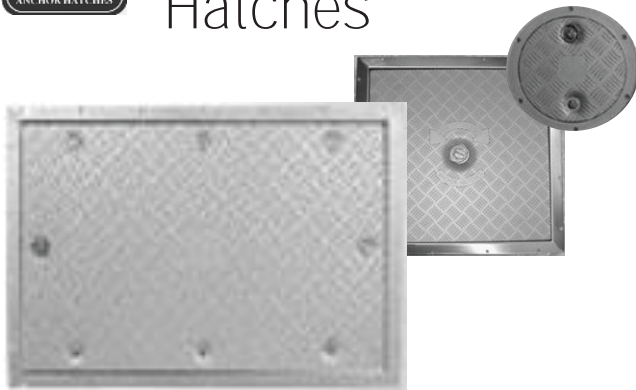
- Stainless Steel Wrapped
- Teflon Core
- Super Low friction

Ask for the "GREEN MARINE" cable

KOBELT
Controls



Anchor Flush Mount
Hatches



**Mufflers and Exhaust
Components**



Stainless Steel Mufflers
And Accessories
2" – 8" inlet size in stock



From Under the Golden Dome



On January 17th, 2019 Senator Brendan Crighton from Lynn filed SENATE DOCKET, NO. 1037, SENATE BILL No. 2060; To the Honorable Senate and House of Representatives of the Commonwealth of Massachusetts in General

Court assembled: The undersigned legislators and/or citizens respectfully petition for the adoption of the accompanying bill: An Act relative to tolls on the roadways of the Commonwealth.

This legislation WILL have a negative economic impact on the ALL citizens in the Commonwealth who drive the highways. If this is you please contact your legislators to find out more on where they stand on Senate Bill 2060. You can find your legislators numbers here; <https://malegislature.gov/legislators> New tolls are just the beginning as more fuel and mileage fees/taxes are in the works as well to fund the bridges, roadways and public transportation.

The MLA Delegates will be discussing this at their upcoming February 12th meeting and we are working with local legislators to find out where this is in the process as well as who is supporting this legislation. Nothing like putting in a fee just be able to say you are not raising taxes!?

SENATE DOCKET, NO. 1037 FILED ON: 1/17/2019

SENATE No. 2060

The Commonwealth of Massachusetts

PRESENTED BY:

Brendan P. Crighton

*To the Honorable Senate and House of Representatives of the Commonwealth of Massachusetts in General
Court assembled:*

The undersigned legislators and/or citizens respectfully petition for the adoption of the accompanying bill:

An Act relative to tolls on the roadways of the Commonwealth.

PETITION OF:

NAME:

Brendan P. Crighton

DISTRICT/ADDRESS:

Third Essex

SENATE DOCKET, NO. 1037 FILED ON: 1/17/2019

SENATE No. 2060

By Mr. Crighton, a petition (accompanied by bill, Senate, No. 2060) of Brendan P. Crighton for legislation relative to tolls on the roadways of the Commonwealth. Transportation.

[SIMILAR MATTER FILED IN PREVIOUS SESSION
SEE SENATE, NO. 1987 OF 2017-2018.]

The Commonwealth of Massachusetts

**In the One Hundred and Ninety-First General Court
(2019-2020)**

An Act relative to tolls on the roadways of the Commonwealth.

Be it enacted by the Senate and House of Representatives in General Court assembled, and by the authority of the same, as follows:

SECTION 1. Section 3 of Chapter 6C of the General Laws, as appearing in the 2016 Official Edition, is hereby amended by striking out, in lines 68 and 69, the words "fix and revise from time to time and charge and collect tolls for transit over the metropolitan highway system and the turnpike" inserting in place thereof the following:- "charge and collect tolls for transit over the metropolitan highway system and the turnpike; said toll rates shall not be increased from the rates in place on January 1, 2019".

SECTION 2. Subsection (a) of Section 13 of said Chapter 6C is hereby amended by striking out, in line 1 the words "fix and revise" and by inserting in place thereof the following:- "reduce the".

10 SECTION 3. Said subsection (a) of said Section 13 of said Chapter 6C is hereby further
11 amended by striking out, in lines 5 to 14, inclusive, the words "Such tolls shall be so fixed and
12 adjusted as to provide, at a minimum, funds sufficient with other revenues, if any, to pay: (i)
13 costs incurred in furtherance of this chapter related to the turnpike including, but not limited to,
14 the cost of owning, maintaining, repairing, reconstructing, improving, rehabilitating, policing,
15 using, administering, controlling and operating the turnpike; and (ii) the principal of, redemption
16 premium, if any, and the interest on notes or bonds relating to the turnpike as the same shall
17 become due and payable and to create and maintain reserves established for any of the
18 department's corporate purposes."

19 SECTION 4. Subsection (b) of said Section 13 of said Chapter 6C is hereby amended by
20 striking out, in lines 43 and 44, the words "fix and revise" and by inserting in place thereof the
21 following:- "reduce the".

22 SECTION 5. Said subsection (b) of said Section 13 of said Chapter 6C is hereby further
23 amended by striking out, in lines 48 to 58, inclusive, the words "Such tolls shall be so fixed and
24 adjusted as to provide, at a minimum, funds sufficient with other revenues, if any, to pay: (i)
25 costs incurred in furtherance of this chapter related to the metropolitan highway system
26 including, but not limited to, the cost of owning, maintaining, repairing, reconstructing,
27 improving, rehabilitating, policing, using, administering, controlling and operating the turnpike;
28 and (ii) the principal of, redemption premium, if any, and the interest on notes or bonds relating
29 to the metropolitan highway system as the same shall become due and payable and to create and
30 maintain reserves established for any of the department's corporate purposes."

31 SECTION 6. Notwithstanding any general or special law to the contrary, the
32 Massachusetts Department of Transportation shall study and report on the feasibility of
33 establishing all-electric tolling along state and interstate highways of the Commonwealth that are
34 not currently subject to a toll. The report shall examine the several options available to the
35 commonwealth to pursue additional tolls, including, but not limited to: (i) placement of all-
36 electronic tolling gantries on roads in the Commonwealth that are not currently tolled; (ii)
37 seeking a federal waiver for the placement of border tolls; (iii) reaching interstate or regional
38 agreements for the placement of additional tolls; and (iv) the commonwealth's ability to establish
39 border tolls in the event of proposed changes to federal law on interstate highway tolling. The
40 department shall file its report along with any legislative recommendations with the house and
41 senate committees on ways and means and the joint committee on transportation on or before
42 December 31, 2019.



MARINE • FISHING GEAR • SAFETY
44 South Street, New Bedford, MA 02740

DSPA 5 M

OUR NEWEST FIRE PROTECTION

www.Hercules-SLR-US.com

JohnReardon@Hercules-SLR-US.com

USCG Safety Inspection Station #327

Commercial Fishing-Marine Safety-Rigging

- ❖ Marine Hardware
- ❖ Cotesi - Netting, Leaded/Sink Rope
- ❖ Stormline & Climate Technical-Foul Weather Gear
- ❖ Buoys & Floats
- ❖ Lobster Bands
- ❖ PFD's, Vests, Float Coats
- ❖ Fish Totes
- ❖ Insulated Tubs
- ❖ Cordage & Twine
- ❖ Mooring Equipment
- ❖ Boarding Ladders
- ❖ Leadline
- ❖ Wire Rope - FC Galv, IWRC, Dyform
- ❖ HiFlyers 12', 14' & 15' XHD
- ❖ Golf & Batting Cage Netting



Inflatable PFD's



Life Raft Sales

- ❖ Revere
 - ❖ Elliot
 - ❖ Survitec
 - ❖ Switlik
- All brands accepted for service



Fenders & Buoys-All Colors



ACR Electronics
Sales & Service
for your E.P.I.R.B.



Boots from
Honeywell Safety



Imperial Survival Suits
Inspections & Safety Drills



Polysteel Rope- Esterpro
Sinking, Hydropro

Call our USCG Certified Drill Conductor
Ted Williams 508-264-5779

44 South Street, New Bedford, MA 02740
Phone: 508-993-0010 Fax: 508-993-9005
Securing – Lifting - Rigging
82 MacArthur Dr. New Bedford, MA 02740
Phone: 508-992-9519 Fax: 508-992-9419

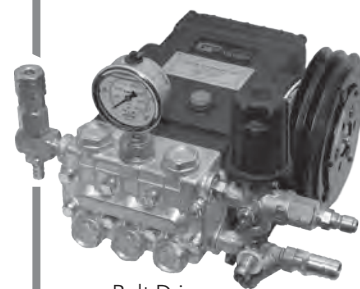


Make cleanup easy and fast.

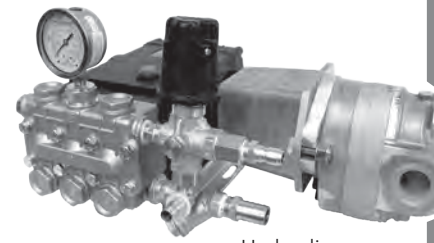
Blast Away!

Onboard Pressure Washers
5.6 GPM @ 3,500 PSI

Our pressure washers come with everything you need, including 50' hose and wand with turbo nozzle.



Belt Driven



Hydraulic

Salt or Fresh Water

Coastal Hydraulics, Inc.

603-474-1914 • sales@coastalhyd.com
www.coastalhyd.com
28 Route 286, Seabrook, NH

Bessy Bait LLC

LONG-LASTING,
AFFORDABLE
LOBSTER BAIT!



All Natural Salted Hairless Cowhide

www.bessybait.com

Available in 30 gal. barrels and 5 gal. pails
CALL: 603.300.2846 or 603.300.2849
EMAIL: info@bessybait.com

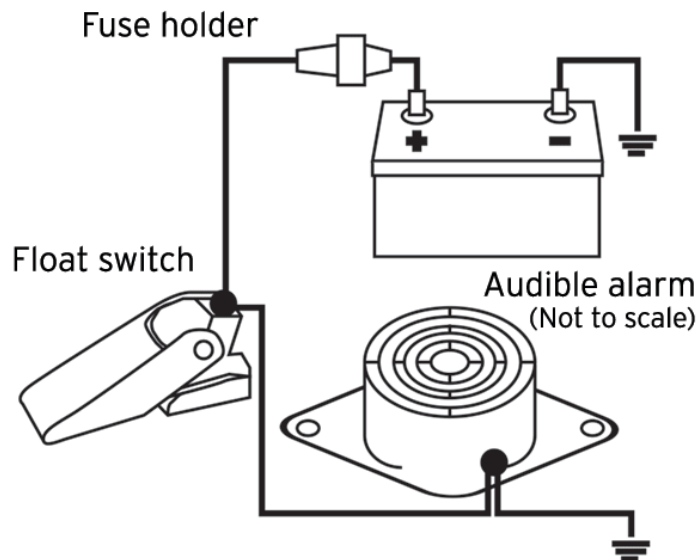
FOR SALE BY APPOINTMENT ONLY AT
155 Batchelder Rd., Seabrook, NH 03874

Install A High-Water Alarm

FOR your SAFETY

This easy install could save your boat.

Can your boat flood without your noticing until a ton of water is already aboard? If your boat has a closed cabin or enclosed compartments, the answer is likely yes. It's so easy to protect against this risk that it really should be standard equipment on new boats, like the ignition key beep in your car. All you need is an inexpensive float switch, an equally inexpensive 12-volt buzzer or siren, an in-line fuse holder, hookup wire, and crimp connectors. You can purchase marine alarm units with both light and sound alarms. If so, follow the manufacturer's instructions.



Locate the float switch in the lowest part of the boat, but higher than the automatic bilge pump. You only want it to activate if the amount of water coming aboard exceeds the discharge capacity of the pump or if the pump has failed to run. Locate the buzzer or siren near the helm so it can be heard over all other external noise.

Remove the fuse from the fuse holder, then crimp an appropriate terminal to one of its leads and connect that to the positive battery terminal or to some other 12-volt terminal that's always energized. The fuse is there to eliminate any fire risk that can occur with a short circuit and should be as near the power source as possible.

With the fuse still removed, use a crimp butt-splice connector to connect the other holder lead to the hookup wire. Route the wire to the mounted float switch, cut it to length, and connect it to one of the switch leads with a butt-splice connector. With a similar length of wire and two connectors, connect the other switch lead to one of the leads from your buzzer. The other buzzer lead gets connected to a battery ground terminal.

Reinstall the fuse and test your circuit by manually lifting the float switch. Secure the switch connections higher than the switch so they'll remain dry in the event of rising water activating the float switch. Also use heat-shrink connectors and cover with silicone marine sealant. Because the float switch remains dry unless water rises above expected levels, this alarm should prove 100-percent reliable without attention, but it's still a good practice to test it periodically by lifting the float. <http://www.boatus.com>



Encore Hartco Tools & Clips
Stanley Spenax Tools & C-Rings
Wematic Tools & D-Rings
Simonds Pneumatic Wire Cutters
Spotnail Staplers & Staples



Complete Parts Inventory
Tool Repair Service

(781) 826-2522
Fax (781) 826 5252
www.fisherairfasteners.com
chris@fisherairfasteners.com



New England Marine & Industrial
www.newenglandmarine.com

Lobster Bands

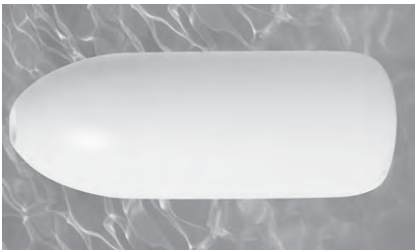
We carry:
 Printed and Non Printed
 Sheddar
 Standard
 Cold Water Shedder
 Jumbo



Buy them by the 1 pound bag, by the case or by the pallet. We also offer wholesale and volume discounts. Call and ask to speak to a salesman.



**Dayglo &
 Flexabar
 Buoy Paint**



Spongex Buoys
 Full selection of sizes
 in Stock

Worcester Cow Hide Bait
 We carry Regular and Hairless Bait
 Call for Special Pricing on both 5 pail
 purchases and pallet (20 pails) purchases
 "One week notice needed on pallet purchases"

200 Spaulding Tpke
 Portsmouth, NH
 603-436-2836

294 Ocean St
 Brant Rock, MA
 781-834-9301

86 Cemetary Rd
 Stonington, ME
 207-367-2692



***Cape Seafoods Bait Shop
Kicking off the Season!***



THE LARGEST BAIT VARIETY IN THE ATLANTIC NORTHEAST

In operation since 2001 and still going strong!

Trust Us for Your Fresh, Salted & Frozen Bait Needs

From (1) Carton to a Full Truck Load.

**Herring, Mackerel, Pogies, Redfish, Rockfish, Tuna, Monkfish, Sardines,
Plaice, Squid, Sea Robin, Halibut, & Silversides.**

We've got you covered!

Great News...We now buy Lobster, too!

Open Year Round (Serving clients 7 Days a Week from Mid-June To Mid-October)

Monday-Friday 5AM-3PM, Saturday 6AM-12PM & Sunday 6AM-10AM

Main Phone Line: 978.283.8522

Bait Shop Phone Line : 978.479.4642

If we don't have it... Please ask and we'll find it!





New England Fishery Management Council

FOR IMMEDIATE RELEASE
December 11, 2019

PRESS CONTACT: Janice Plante
(607) 592-4817, jplante@nefmc.org

Scallops: Council Approves Framework 32 for 2020 Fishing Year

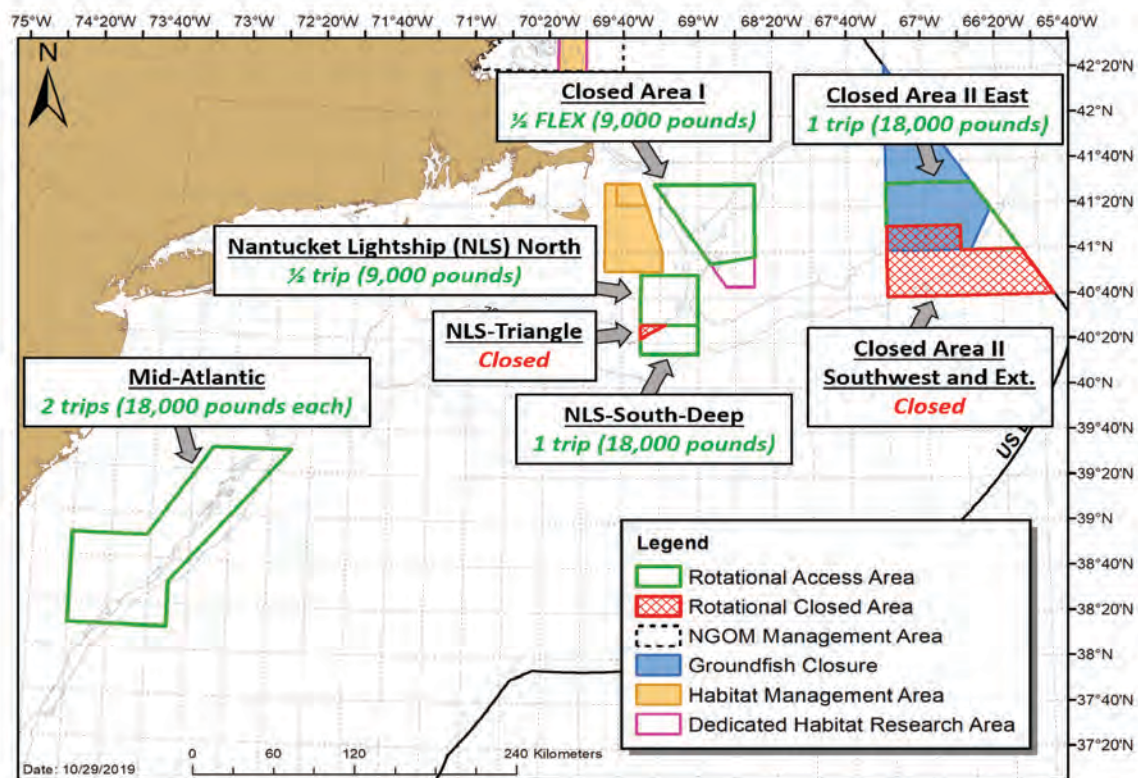
On December 5 during its meeting in Newport, RI, the New England Fishery Management Council approved Framework Adjustment 32 to the Atlantic Sea Scallop Fishery Management Plan. The framework includes specifications for the 2020 fishing year, default specifications for 2021, and measures to mitigate impacts on Georges Bank yellowtail flounder and northern windowpane flounder.

The new specifications are expected to result in roughly 52 million pounds of projected landings in 2020 with an estimated ex-vessel value of close to \$487 million. Landings of this magnitude, while lower than the 2019 projection of roughly 62.5 million pounds, will remain well above the historical average.

The resource, which is not overfished or subject to overfishing, is considered healthy. Conservative management has greatly contributed to high fishery landings and revenues in recent years. Based on results from the [2019 scallop surveys](#), large scallops from the remarkably strong 2012 and 2013 year classes are expected to continue supporting the majority of fishing in rotational access areas in fishing year 2020.

The Council's Scallop Advisory Panel (AP) and Scallop Committee supported taking a conservative approach for next year, opting to leave some harvestable scallops on the bottom to support the 2021 fishery.

The full Council endorsed this strategy, cognizant of the fact that recruitment has not been robust. While this year's surveys did find patches of young scallops in some spots, signs of large, incoming year classes were not evident on a wider scale.



Full-time limited access scallopers will be allocated 24 open area days-at-sea and, as depicted in the map above, six access area trips in the 2020 fishing year, which begins on April 1. – New England Fishery Management Council graphic

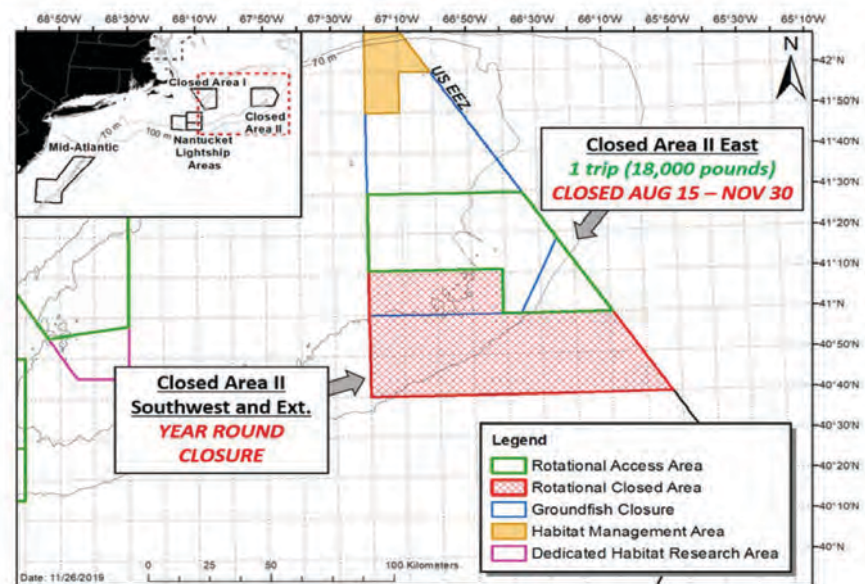


New England Fishery Management Council

Framework 32 must be reviewed and implemented by the National Marine Fisheries Service (NMFS/NOAA Fisheries) before becoming effective. The target implementation date is April 1, 2020, the start of the new scallop fishing year. Here are the major provisions within the framework.

- Full-Time Limited Access Scallop Permit Holders:** Scallopers in this category will be allocated 24 open area days-at-sea and six access area trips as follows:
 - One Closed Area II trip at 18,000 pounds;
 - One Closed Area I FLEX trip at 9,000 pounds;
 - One Nantucket Lightship-North trip at 9,000 pounds;
 - One Nantucket Lightship-South-Deep trip at 18,000 pounds;
 - Two Mid-Atlantic Access Area trips at 18,000 pounds each.
- Pound-For-Pound Exchanges:** The access area possession limit will be set at 18,000 pounds per trip, but full-time limited access vessels will be able to exchange access area allocations in 9,000-pound increments for all areas. For example, 9,000 pounds from Nantucket Lightship-North could be exchanged for 9,000-pounds from Closed Area II with another permit holder.
- Part-Time Limited Access Scallop Permit Holders:** Scallopers in this category will be allocated 9.6 open area days-at-sea along with three access area trips – two being in the Mid-Atlantic Access Area and one in Closed Area II – at 12,000 pounds each.
- Boundary Changes:** Note the boundary changes in the map on page 1 compared to the [current map](#) for the 2019 fishery. Some areas that currently are closed will revert to open bottom in 2020. Also, Closed Area II boundaries have been expanded, and the southwest and extension portions will be closed year round to protect concentrations of small scallops there.
- Flatfish Bycatch Mitigation:** The Closed Area II Scallop Rotational Access Area seasonal closure will be extended an additional two weeks, running from August 15 through November 30 during the 2020 fishing year. Compensation fishing under the Scallop Research Set-Aside (RSA) Program will be allowed only on open bottom, in the Mid-Atlantic Access Area, and, to a certain extent, in the Northern Gulf of Maine Management Area. Collectively, these measures will help reduce impacts on Georges Bank yellowtail flounder and northern windowpane flounder, as will the southwest/extension year-round closure in Closed Area II.

The "FLEX" trip in Closed Area I gives scallopers the ability to fish part or all of this 9,000-pound trip in the Mid-Atlantic Access Area rather than Closed Area I.



– New England Fishery Management Council graphic



New England Fishery Management Council

- Nantucket Lightship South-Deep Crew Limits:** Dense aggregations of slow-growing, aging scallops are located in this deep-water area. The scallops are marketable but smaller in size, taking longer to handle and shuck. As such, Framework 32 will allow a two-person increase in the crew limit for *this area only*, bringing the maximum crew size to 10 on full-time limited access boats and eight on single dredge boats.
- Limited Access General Category (LAGC) Individual Fishing Quota (IFQ) Permit Holders:** LAGC IFQ fishermen, who receive 5.5% of the sub-annual catch target for scallops as quota, will be allocated a total of 2,855 access area trips. Trips that initially were allocated to Closed Area II – a long distance for many vessels in this category – will be redistributed to Closed Area I and Nantucket Lightship-North.
- Fishing Year 2021 Default:** Full-time limited access scallopers will be allowed to fish 75% of this year’s open area days-at-sea and make one 18,000-pound trip in the Mid-Atlantic Access Area if implementation of new 2021 measures is delayed. Default measures are in place for other permit categories as well.

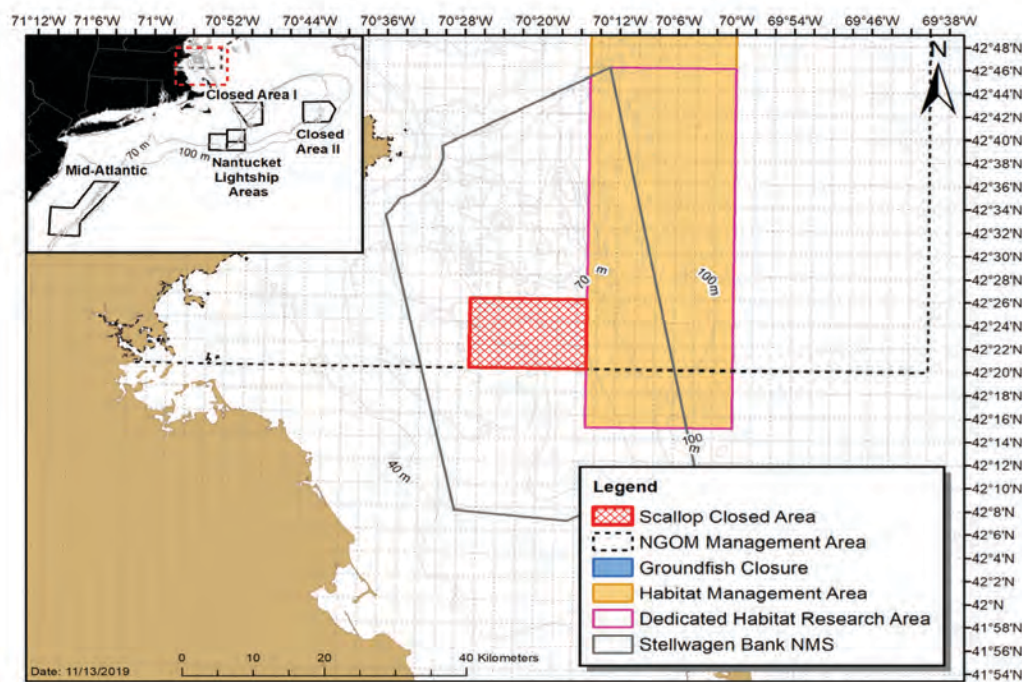
Northern Gulf of Maine (NGOM) Management Area / Stellwagen Bank Closure Area

Framework 32 proposes to set the total allowable catch (TAC) for the Northern Gulf of Maine Management Area at 350,000 pounds for 2020. The TAC will be divided under the same temporary approach used the past two years, which results in the first 70,000 pounds going to the LAGC fishery and the rest being split 50/50 between the LAGC fishery and the limited access fleet that holds IFQ. Under this formula, the LAGC fishery will receive 210,000 pounds. The limited access fishery will receive 140,000 pounds, which can be utilized *only* through RSA fishing within the NGOM area.

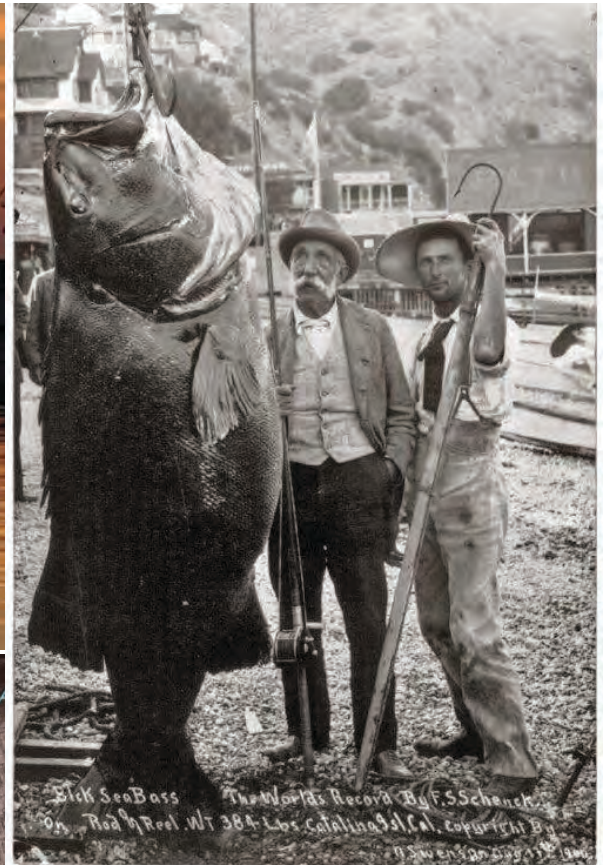
In a positive development, the 2019 scallop surveys found high densities of small scallops within a portion of Stellwagen Bank that’s located within the NGOM area (see red-hatched box on the map at right). The Council supported closing this area for two years to protect these new recruits and allow them to grow and contribute to the fishery in future years.

GET MORE INFO: Framework 32 contains several other measures and specifications.

- All documents and presentation used during the Council’s discussion can be found [here](#).
- Questions? Contact Jonathon Peros, the Council’s scallop plan coordinator, at (978) 465-0492, ext. 117, jperos@nefmc.org.



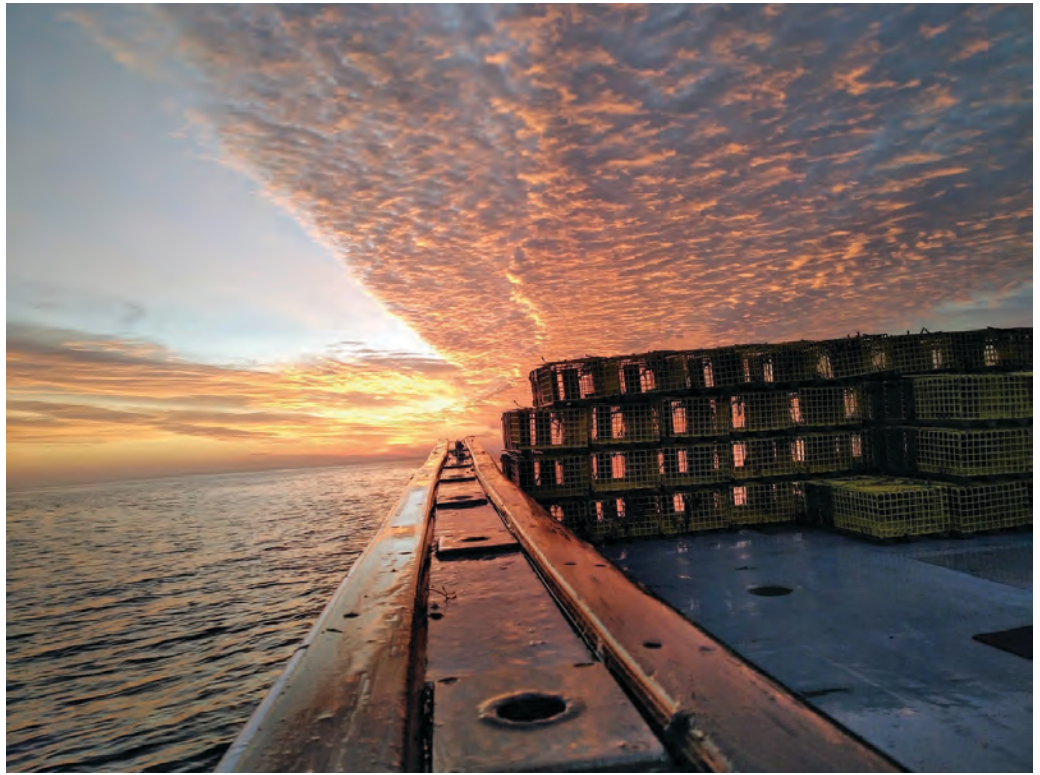
The proposed two-year scallop closure on Stellwagen Bank is located within the red-hatched box in the map above. – New England Fishery Management Council graphic



"And in the end, it's not the years in your life that count, it's the life in your years."

Abraham Lincoln







ATLANTIC OFFSHORE LOBSTERMEN'S ASSN.

Offshore lobster industry advocate since 1972
Pro-active, common sense, member driven approach

WHAT WE DO

- ◆ Helped to establish Limited Entry in Area 3 lobster fishery
- ◆ Lobbied for Area 3 historic participation & transferability
- ◆ Secured funds to offset costs of sinking groundline
- ◆ Advocated for Jonah Crab Fishery Management Plan
- ◆ Led industry's response to the marine monument
- ◆ Strong advocate of common sense whale rules
- ◆ Leadership roles on the ASMFC's Lobster Board, Lobster and Jonah Crab Advisory Panels, and Area 3 LCMT
- ◆ NEFMC's Habitat Committee and NOAA Fisheries' Atlantic Large Whale Take Reduction Team member

2020 ISSUES

Right Whales	100% Vessel Reporting
Trap Cap Regulations	Marine Monument
Wind Energy	Bottom Sharing

Recruiting offshore lobstermen and associated businesses
New voices to help guide us in the right direction for the industry

Join Today To Learn More, Contact Heidi Henninger **Join Today**
603-828-9342 | heidi@offshorelobster.org | www.offshorelobster.org

Food for thought....

As the 2019 fishing season has come to a close and you are starting to sort through and finish up all the catch reports, supplemental reports, retail reports, and more reports than ever; **DO NOT FORGET TO KEEP A COPY** for your records. We have had several calls from fishermen that are trying to file their final reports for the 2019 season and have had them sent back numerous times for additional and or missing data. Inadvertently they did not keep a copy for themselves and had to start over from scratch. A copy for your records is always the best way to alleviate any confusion, especially if they are lost in the mail. You could take this one step further and send it certified, return receipt requested and then you will be ensured it was received and you will get a confirmation in the mail. Sometimes more copies is fewer headaches in the end!



Bait
Claw

Load Bait Bags **easier** and **faster** with the **Bait Claw**.

Durable & Strong



**Saves Time
Saves Money**



**Gives you an
extra hand**



The original Bait Claw is a bait loading tool that gives you an extra hand filling bait bags. It saves time, saves money and makes loading bait bags a breeze.





Available now at
www.thebaitclaw.com



SERIOUS ABOUT SAFETY

LRSE.COM | 401-816-5400

590 FISH RD, TIVERTON, RI 02878
 181 OLD COLONY AVE, UNIT A, BOSTON, MA 02127
 55 STATE ST, NARRAGANSETT, RI 02882



SALES • SERVICE • TRAINING • RENTAL • OUTFITTING • PICKUP + DELIVERY

Safety Equipment Servicing

Life Raft + Survival Equipment has been selling and servicing all major brands of Life Rafts, EPIRBs/PLBs, Life Jackets, Immersion Suits, and Man Overboard Equipment since 1983.

We offer pickup and delivery to over 20 locations throughout the Northeast.

CALL FOR GREAT PRICING.

North East Safety Training

NEST, a division of LRSE, offers hands-on Basic, Advanced, and Customized Safety Training Courses, Monthly Drill Conducting, First Aid/CPR/AED Courses and Vessel Inspections.

VISIT OUR WEBSITE TO LEARN MORE.



LIFE RAFTS



EPIRBs + PLBs



LIFE JACKETS



IMMERSION SUITS



MAN OVERBOARD



PICKUP + DELIVERY

COMMERCIAL LIFE RAFTS

Elliot, Zodiac, Crewsaver, Revere, Viking



FIBRELIGHT LADDERS

Man Overboard Recovery Cradle,
Self Recovery Ladder



IMMERSION SUITS

Imperial



EPIRBs

ACR V4



FIRETKO®

Fire Suppression Tool



LIFE JACKETS

Mustang



Conn. awards major offshore project to Vineyard Wind

Benjamin Storrow, E&E News reporter Published: Friday, December 6, 2019

Vineyard Wind won a contract with Connecticut to develop an 804-megawatt offshore wind project, state regulators announced yesterday.

The news hands the developer a major victory as it works to break a federal permitting logjam on its first project, an 800-MW proposal contracted to supply power to Massachusetts. The Bureau of Ocean Energy Management brought that development to a halt this summer, saying a cumulative environmental evaluation of other projects in the area was needed before it can proceed.

In a conference call with reporters, Vineyard Wind CEO Lars Pedersen said BOEM told the company it anticipates finishing its study of the Massachusetts project in the first half of 2020. The Park City Wind project, Vineyard's second development for Connecticut, will be included as

part of that review, Pedersen said.

"Once the programmatic review for offshore wind in a more general sense is concluded, we would expect some of the challenges we've faced with the first project would be already handled in a much earlier stage than what we saw with the first project," Pedersen said.

Vineyard Wind, a partnership of Avangrid Inc. and Copenhagen Infrastructure Partners, beat out two other developers for the Connecticut contract. The price of the electricity to be supplied by Vineyard Wind was not disclosed, but state regulators said it was below the lowest publicly announced price for an offshore wind project in the United States.

Pedersen said the company would take advantage of the investment tax credit for renewables if it is still available, but that the project was not contingent on receiving the federal subsidy. Park City Wind is projected to begin construction in 2023, with commercial operations slated for 2025.

Connecticut officials said the project would be able to generate enough electricity to supply the equivalent of 14% of the state's electric demand. They estimated it would displace 25 million tons of carbon dioxide, the equivalent of 4.8 million cars.

Vineyard Wind will invest \$890 million in Bridgeport, an economically struggling port and Connecticut's largest city, as part of the deal. The company plans to redevelop an 18-acre parcel equipped

with a facility to manufacture transition pieces, which essentially connect the turbine to its foundation.

The deal is Connecticut's third procurement of renewable energy. Last year, the state contracted for 304 MW of offshore wind from Ørsted A/S, the Danish wind giant.

"Connecticut is diversifying its offshore wind portfolio with this latest procurement selection, which sets up Connecticut as a regional leader in the creation of a thriving industry that will bring tangible benefits for our state and the entire region," Gov. Ned Lamont (D) said in a statement.

The offshore wind industry has experienced whiplash this year, as a series of Northeastern states announced contracts to buy electricity from proposed offshore wind developers. New York and New Jersey announced a first round of projects this year, while Massachusetts recently contracted for its second offshore wind development.

Yet much of that momentum stalled when BOEM announced that a cumulative impact study of Vineyard Wind's Massachusetts project was needed. The development is the first large-scale offshore wind project proposed in the United States. BOEM's call for additional environmental review came amid mounting pressure from fishermen, who have argued that offshore wind threatens their industry.

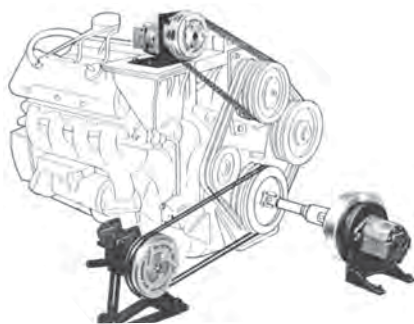
A BOEM spokesman confirmed yesterday that the bureau is targeting early 2020 for completion of the study of Vineyard Wind's Massachusetts project.

Vineyard Wind's decision to move forward despite the permitting woes is an encouraging sign for the industry, said Anthony Logan, an analyst who tracks the industry at Wood Mackenzie.

"It is in an indicator that we should be patient, but the prize appears very real, and we seem on our way to achieve it," Logan said. "It may just not be as front-loaded as we thought a year ago."

Ask For

PITTS Electric Clutches



SHAFT OR V-BELT DRIVEN
MARINE CLUTCHES

Adaptable, Dependable... Easy to Install & Maintain

- 75 to 1500 lbs. ft
- 12 or 24 VDC power supply
- Zinc plated – meets ASTM B-117 salt spray test
- SAE pump mount options available

PITTS Authorized Dealer:

Coastal Hydraulics, Inc.

603-474-1914 • sales@coastalhyd.com

www.coastalhyd.com

28 Route 286, Seabrook, NH



AQUAMESH®
is celebrating

40

YEARS
of marine excellence

*Thanks to all of you for the continued
success of AQUAMESH®*

1.800.762.6374 • sales@riverdale.com • www.riverdale.com



Northeastern University Marine Science Center Seawater Intake Upgrade Notice

Last month, the Massachusetts Lobstermen's Association and the Nahant Fishermen's Alliance both submitted letters of concern to the Energy and Environmental Affairs Secretary Kathleen A. Theoharides regarding Northeasters' Phase Waiver 1 request that was submitted to the Massachusetts Environmental Protection Agency (MEPA). Should this request be allowed Northeastern could start construction on the Seawater Intake System before their Draft Environmental Impact Report (DEIR). The reasoning behind this request has to do with biofouling with mussels in their pipes, all lobstermen know that mussels get in pipes and they need to do routine preventative maintenance to keep hoses, sea strainer clean and clear. In 2011/2012 Northeastern received a \$1.77million NSF (taxpayer money) grant specifically for a new state of the art seawater system. Now they say they have to do a new one as soon as possible. This does not seem like a well maintained facility and why should the lobster industry pay the price for their poor planning? Stay tuned.



**“Specializing in the sale & delivery of
LOBSTER BAIT
for over 30 years”**

FRESH FROZEN AND SALTED BAIT AVAILABLE

**SKATES ~ HERRING ~ POGIES ~ HADDOCK ~ COD FISH
POLLOCK ~ FLAT FISH ~ FISH SKINS ~ RED FISH
DOG FISH HEADS ~ SALMON**



**C & P BAIT
33 Wright St
New Bedford, MA 02740**

**Contact:
Danny Costa 508-951-9818
Carlos Pereira 508-951-9819**



Massachusetts Lobstermen's Association, Inc.

8 Otis Place ~ Scituate, MA 02066
Bus. (781) 545-6984 Fax. (781) 545-7837

December 11, 2019

Secretary Kathleen A Theoharides
Massachusetts Executive Office of Energy and Environmental Affairs
Attn: MEPA Office
100 Cambridge Street, Suite 900
Boston, MA 02114

RE: EEA No. 16046 Northeastern University Marine Science Center Seawater Intake
Upgrade Notice of Project Change/Phase I Waiver Request and Draft Environmental Report

Dear Secretary Theoharides,

The Massachusetts Lobstermen's Association (MLA) submits this letter of opposition with great concern on behalf of our 1800 members in response to the Northeastern University (NU) Marine Science Center Seawater Intake Upgrade Notice of Project Change/Phase I Waiver Request for the proposed replacement and upgrade of the existing seawater intake system at the Northeastern University Marine Science Center in Nahant.

The MLA strongly opposes ANY introduction of warm water into the Gulf of Maine ecosystem fearing it will create another cod fishery scenario and the demise of the Gulf of Maine commercial lobster fishery. As stated in a publication found on the National Oceanic and Atmospheric Administrations' website <http://research.noaa.gov/LeavingPage.aspx?http%3A%2F%2Fwww.sciencemag.org%2Flookup%2Fdoi%2F10.1126%2Fscience.aac9819> **Slow adaptation in the face of rapid warming leads to collapse of the Gulf of Maine cod fishery** *Over the past decade, sea surface temperatures in the Gulf of Maine increased faster than 99% of the global ocean.* <http://science.sciencemag.org/content/350/6262/809> We do not need any additional warm water added to the Gulf of Maine ecosystem or anywhere else for that matter.

Established in 1963, the MLA is a member-driven organization that accepts and supports the interdependence of species conservation and the members' collective economic interests. The membership is comprised of fishermen from Maryland to Canada and encompasses a wide variety of gear types from fixed gear to mobile gear alike.

The MLA continues to work conscientiously through the management process with the Division of Marine Fisheries, the Atlantic States Marine Fisheries Commission as well as the New England Fisheries Management Council to ensure the continued sustainability and profitability of the resources in which our fishermen are engaged in. The MLA is also actively involved in the Northeast Regional Ocean Council, the Massachusetts Coastal Zone Management and MA Ocean Planning Commission to ensure the recommendations of the commercial fishermen are vetted and implemented.

The revised Phase I Waiver proposal did not change anything other than the projects timeline in the Environmental Notification Form from the Pare, Corp. dated May 31, 2019 to Secretary Kathleen A Theoharides, Massachusetts Executive Office of Energy and Environmental Affairs. The intake of seawater from 2400 gallons per minute intake of seawater to 550gallons per minute to be utilized in tanks and not to cool their facility is still, unacceptable. More cool water in and more warmer water out give us great concern seeing that the water temperature in the Gulf of Maine is continually rising with no end in sight.

The commercial lobster fishery in Nahant is a historically and economically important to the Commonwealth and the people who depend upon a healthy ecosystem. Per the 2018 Division of Marine Fisheries data collection, Nahant is the 13th most productive port in the Commonwealth landing 423,478 lbs of American Lobster with an estimated value to the Commonwealth of 10.3 million dollars and is the home to 13 commercial lobstermen. The lobsters landed in Nahant is significant to the local economy and employs several hundred people in the shoreside support businesses such as marinas, lobster dealers, bait dealers, crew, marine supply stores and more.

Lastly, the proposed work on this project is slated to begin in the summer of 2020 when there are tremendous amounts of egg bearing lobsters that come to shallow waters along the coast to release the eggs. We encourage you to evaluate the timing of this so to avoid any interruptions to the natural release of the eggs into the ecosystem as this is the future stocks the commercial lobstermen rely on to be viable.

How can an academic institution such as NU propose such a large scale project on the coastline in the name of science that will negatively impact the ecosystem they are protecting and studying? The overall construction and operation of the facility will have immediate and long-lasting negative impacts on the ecosystem NU will be abutting and taking from on a regular basis leaving the commercial lobstermen, fishermen and naturalists confounded, all in the name of science.

We are hopeful that the State would oppose ANY introduction of warm water into the Gulf of Maine ecosystem given that it is warming faster than any other place on the planet. We fear theses impacts to the lobster resource will be significant and irreparable, even with a proposed lobster hatchery, and without any recourse for our commercial lobstermen to recoup lost income from the lost lobster stock due to the construction and warmer water that will be added into the Gulf of Maine.

Thank you for your thoughtful and deliberate consideration on this most sensitive matter. Please feel free to call me with any questions you may have.

Thank you,
Beth Casoni
Executive Director

Cc;
MLA, Ex. Committee
MA Dept. of Env. Protection, Alex Strycky
MA Div. of Marine Fisheries, Dan McKiernan
MA Coastal Caucus, Sen. Bruce Tarr & Rep. Josh Cutler

Secretary Kathleen A. Theoharides
 Secretary of Environmental Affairs
 100 Cambridge St. Suite 900
 Boston, MA 02114

Dear Secretary Theoharides

Just over a year ago several citizens of Nahant discovered evidence that Northeastern University (NU) was planning a huge expansion at East Point. Initially, we learned that Northeastern proposed the construction of a 60,000 square foot facility and a seawater pumping system which would increase the capacity five fold.

Most of Nahant's citizens were shocked by the size and scope of this project. We were most offended by the total lack of transparency on the part of Northeastern University administrators in divulging their plans. Seventeen hundred Nahant residents voiced their concerns about this project by signing a petition that was delivered to the president of Northeastern University during the spring of 2018. Many residents have since placed signs prominently on their properties and have dedicated countless hours and financial support to combat further development at East Point.

When it became clear that the citizens of Nahant would not accept this damaging expansion without a fight, administrators at Northeastern University began publishing their propaganda in February 2018. As we are all aware, their misinformation campaign has been persistent. Their five mailings to date have distorted the facts and have attempted to bribe the citizens of this town with a bill of goods in the hopes that we will be placated into submission. Their latest mailer landed in our mailboxes only a few days prior to the Board of Selectmen's (BOS) meeting where Northeastern revealed their three revised plans for East Point on December 11, 2018.

This glossy pamphlet completely fabricated the views of Nahant's lobstermen by claiming that we are actively collaborating with Northeastern University and its expansion plans by working to develop a lobster hatchery. Besides the fact that this is a complete fabrication, this publication neglected to mention that the current water intake system has destroyed the larvae of millions of lobster and finfish over the decades that it has been operational as MSC Director Geoff Trussell was reluctantly forced to admit at the December eleventh 2018 BOS's meeting.

We, the lobstermen of Nahant, cannot be bought with the promise of a lobster hatchery to be developed in conjunction with the planned expansion. As one of the oldest and significant lobster fishing fleets in the Commonwealth of Massachusetts, we have closely observed how Northeastern University negatively interacts with the environment. We are not only citizens of this town but as lobstermen whose livelihoods are intimately tied to the waters around East Point, we wish to make it unequivocally clear that we in no way support expansion at East Point. Furthermore, we believe that the proposed development is clearly prohibited by Nahant's existing zoning by-laws. A Natural Resource designation was established in 1991 with the purpose of protecting wildlife habitat and to maintain Nahant's limited open space for all of its residents. The by-law clearly states that this protected land cannot be developed for any other purpose. Additionally, Massachusetts case law has established a clear precedent which shows that the Dover Amendment does not supersede our Natural Resource zoning. We call on MEPA to insist that Northeastern follow all of the requirements of the MEPA Certificate of August 2, 2019 which among other things directed Northeastern to give thorough answers as to why they require an expansion/upgrade to their seawater system. Northeastern's present seawater system, paid for with a National Science Foundation 1.77 million-dollar (taxpayer's money) grant, is barely five years old! The biofouling with blue mussels that Northeastern complains about is a typical condition that happens to piping on many lobster boats and is easily remedied with simple maintenance. Northeastern does not need huge new pipes that will do greater harm to the marine environment. They should not be allowed to destroy an important cove where Winter Flounder and lobster have been spawning for generations. They need to do regular maintenance. They do not need emergency action as they claim in their MEPA PHASE 1 WAIVER REQUEST. The idea of petitioning for a Project Change is an insult to the Office of Environment Affairs efforts and policy and the marine environment that the MSC claims to mentor!

Thank you,
 Nahant Fishermen's Alliance
 179 Willow Road
 Nahant, MA. 01908

Mark J Irvine
 Justin Mahoney
 Bill Mahoney
 James Passanisi
 Timothy OKeefe
 John Moleti
 Richard Cadigan
 James Moleti

Joel Marie
 Warren Edwards
 Richard Moleti
 Edward Mahoney
 Brian Mahoney
 Fred Hefler
 Anthony Alessi
 Josh Mahoney

This Is Why You Have More Joint Pain During the Winter

ATMOSPHERIC PRESSURE AND YOUR MENTAL HEALTH MAKE WINTER JOINT PAIN WORSE.

You probably experience the same thing every winter: The instant those crisp fall days transform into an ice-cold winter wonderland, your joints start aching. Winter joint pain happens like clockwork. “People often complain of an increase in joint pain during the colder months or before a storm—especially if they suffer from joint conditions like arthritis, chronic pain, or injuries,” says Danielle Weis, physical therapist and orthopedic clinical specialist at Spring Forward Physical Therapy in New York.

The reasons behind winter joint pain can be tricky to identify. As Weis notes, the “studies that exist have inconclusive and even contradictory findings.” That’s partly

because the research sometimes neglects to take “psychological factors and activity levels into account,” she notes. Looking at the whole picture, however, gives a clearer idea as to why damp, cold weather has your joints aching more than usual.

There are changes in atmospheric pressure.

Winter brings about all sorts of changes in the atmosphere, and you really can feel it in your bones. “Tendons, muscles, bones, joints, and scars are all made up of tissues of various densities that expand and contract differently during times of humidity and colder temperatures,” Weis says. “These effects may cause an increase in sensitivity to areas where

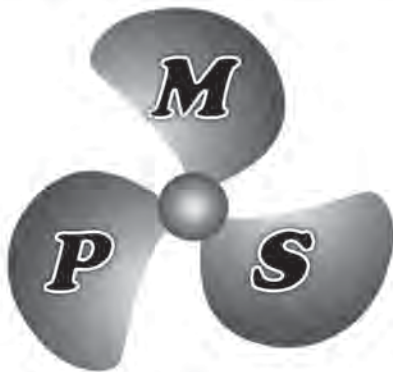
microtrauma—found in new or old injuries—exist.”

In fact, a 2019 study published in the journal PLOS One found that lower barometric pressure—which is what we experience in the winter—is associated with an increase in pain intensity and unpleasantness. And a 2007 study published in the American Journal of Medicine also showed that changes in barometric pressure and temperature affect the severity of pain among those with knee osteoarthritis.

Your joints aren't properly lubricated.

Our joints—including the hips, knees, feet, ankles, hands, and shoulders—contain synovial fluid, which “lubricates the joints and

OVER 20 YEARS EXPERIENCE ~ ALL MATERIALS & SIZES



**FOR FAST SERVICE
CALL MIKE @
508.979.8000**

marine.propeller128@gmail.com

MARINE
PROPELLER SERVICE

REPAIRS &
RECONDITIONING
(Fast & Fully Insured)



THE MOST RELIABLE PROPELLER SERVICE COMPANY ON THE SOUTHCOAST

74 MAIN STREET FAIRHAVEN MA 02719 508.979.8000 FAX 774.206.6449

helps allow for smooth movement,” Weis says. When the weather changes, so can that fluid. “Low temperatures and humidity may make this joint fluid more viscous, which can make joints more stiff, increase friction during movement, and make them more sensitive to stress,” she explains.

You're more stressed, anxious, and depressed.

When you're stressed, your body becomes more tense—and that increase in tension can bring about joint pain, according to the University of Washington School of Medicine. Considering winter is the most stressful time of the year with an increase in family time (and heated dinner discussions), financial struggles, and trying to maintain work-life balance, it's no wonder anxiety flares up, and joint pain with it.

This is especially true for those with a chronic disease, like arthritis, according to the Arthritis Foundation. And that daily pain you're experiencing is both physically and mentally draining, which can incite depression. Understandably, you can feel like you're stuck in a loop of pain that can be very hard to escape from.

What can you do about winter joint pain?

If there's one way to get relief from any joint pain you're experiencing during cold weather, it's movement. “If you're stuck in one position for long periods of time—be it sitting, lying down, or even standing—your joints will stiffen up,” Weis says.

At first, movement might be a little uncomfortable or painful, but that's totally normal. It will get better with time. “Take it slow. Don't jump up and get moving as fast as you can. Instead, perform some slow movements, like bending and straightening the knees and elbows, shoulder/ankle/wrist rolling, opening and closing the hands, and standing marches,” Weis says. “Once your body adjusts to moving, the initial discomfort should soon improve and you can be on your way. If it doesn't improve, continue to take it slow and don't push into the pain.”

You can also take more hot showers or use a heated blanket, which both help alleviate discomfort. And stretching regularly can do your joints good, too. If you stay active and limber, you and your joints will be in a better place this winter. <https://bestlifeonline.com/winter-joint-pain/>

Did you know.....

One of the original 13 colonies and one of the six New England states, Massachusetts (officially called a commonwealth) is known for being the landing place of the Mayflower and the Pilgrims. English explorer and colonist John Smith named the state for the Massachusetts tribe. Boston, the state capital, was a hotbed of activity, including the Boston Massacre and the Boston Tea Party, during the American Revolution. In addition to its revolutionary spirit, the state is known for sparking the American Industrial Revolution with the growth of textile mills in Lowell, and for its large Irish-American population.

Date of Statehood: February 6, 1788

Did you know?

The chocolate chip cookie was reportedly invented in 1930 at the Toll House Restaurant in Whitman, Massachusetts. In 1997 it was designated the official cookie of the commonwealth.

Capital: Boston, Population: 6,547,629 (2010), Size: 10,554 square miles, Nickname(s): Bay State, Motto: Ense petit placidam sub libertate quietem (“By the sword we seek peace, but peace only underliberty”), Tree: American Elm, Flower: Mayflower, Bird: Chickadee

Interesting Facts

- After a harsh winter that claimed the lives of half of the Mayflower's original immigrants from England in 1620, the Pilgrims were taught to plant corn and survive in the wilderness by Native American Indians. In November of the following year, the Pilgrims organized a harvest feast in Plymouth to celebrate their new crop—an event widely regarded as America's “first Thanksgiving.”
- Established in Cambridge in 1636 by vote of the Massachusetts Bay Colony, Harvard University was the first institution of higher education in the United States.
- Nineteen people were hanged at Gallows Hill in 1692 for worshipping the devil and practicing witchcraft, and close to 200 others were similarly accused. In 1711, after judge Samuel Sewall and others involved in the Salem witch trials had admitted wrongdoing, the colony restored the good names of all accused and granted restitution to their heirs.
- Massachusetts observes a legal holiday called Patriots' Day on the third Monday of April each year, commemorating the first battles of the American Revolution at Lexington and Concord on April 19, 1775.
- Following the American Revolutionary War, many people struggled to support their families under the heavy tax burdens levied to pay off war debt. Faced with losing their property, a group of insurgents led by Daniel Shays—a farmer and veteran of the war—forced the closure of several debtors' courts and attempted to occupy a federal arsenal in Springfield on January 25, 1787. Although repelled, Shays' Rebellion highlighted the need for a stronger national government and influenced the creation of the U.S. Constitution.
- Dr. James Naismith, a physical education teacher at the International YMCA in Springfield, invented the game of basketball in December 1891 as a way to occupy his students indoors during the cold winter months. The first game was played with a soccer ball and two peach baskets nailed to railings 10 feet above the floor. https://www.history.com/topics/us-states/massachusetts#section_1

HAMILTON MARINE

RIGID High Performance LED Lights

High purity aluminum housing. Provides superior light with low power consumption. Search# RIL-

Starting At **\$125⁹⁹** ea



LED Searchlights

Compact 316 stainless steel housing. Provides a clear white beam. 10V-32 volt.

5-3/4" Dia., 200,000 Candle Power
DHR-150CBLED **\$495³⁵** ea
Order# 772198

5-3/4" LED Insert **\$356** ea
Order# 772199

7" Dia., 300,000 Candle Power
DHR-180CBLED **\$822⁵⁵** ea
Order# 772355

7" LED Insert **\$655³⁹** ea
Order# 772354



GRUNDÉNS

15" Deck Boss Boots

Has a flexible upper that folds down when the full 15" height is not needed and a 1" groove holds a durable silicone band that keeps pants dry. Sizes 7-14. Search# GRD-15DB

\$129⁹⁹ pr



KENT Type I Offshore Commercial Life Vest

Adult universal. 22 lbs buoyancy. SOLAS grade reflective tape. Light loop and whistle attachment.

USCG APPROVED

\$313⁶ ea

PFD-1A
Order# 748930



BEACON 35 Automatic/Manual Inflatable PFD

USCG Approved Type V with Type II Performance

Universal sizing, fits 30"-65" chest. Comfortable low profile fit, neoprene neckline. Super bright retro-reflective areas on front, a high-visibility BEACON logo on the back. Full 35 lbs buoyancy.

Reg 179.99

\$149⁹⁹ ea

SAVE \$30

Color Order#
Orange/Gray 773536
Blue/Light Gray 773535



Knife with Cushioned Handle

\$116⁹ ea

HML-KNIFE-M
Order# 172011

Knife Sheath

\$98⁹ ea

HML-SHEATH
Order# 749724

Molded Handle Only

\$62⁹ ea

HML-KNIFE-MH
Order# 762605



KENT Adult Universal Survival Suit

High visibility yellow inflatable head pillow, face mask, mitts and ankle adjustments. Removable head pillow. Articulated arms for easier donning. Includes whistle and easy accessible buddy line with snap hook.

USCG APPROVED

\$259⁹⁹ ea

KNT-1540-AU
Order# 753274



IMPERIAL Adult Universal Cold Water Immersion Suit

Three fingered mitt. Wide legs for easy donning. Snug fitting face seal. Retro-reflective tape for extra visibility. One piece sealed construction. Includes whistle and storage bag.

USCG APPROVED

\$269⁹⁹ ea

RVS-1409A
Order# 743829



Cold Water Neoprene Gloves

100% quality neoprene. Stays flexible in the cold. Rugged sharkskin palms for sure grip and adjustable wrist strap for a snug fit.

\$17⁹⁹ pr

Sizes S-2XL
Search# HMG-5600



SAVE BY THE DOZEN!

Storm Jacket & Bib Pants

Stay warm and dry with phthalate free fabrics for low environmental impact.

Bib Pants **\$90** ea

Search# HHN-70583

Jacket **\$135** ea

Search# HHN-70283



Carhartt Base Layer Tops and Bottoms

Medium and heavyweight tops and bottoms designed for durability, comfort and warmth.

Starting At **\$29⁹⁹** ea

Search# CRH-MBL

Women's tops available in Deep Wine.



Electric Rope Cutting Guns

100 Watts
\$32⁸² ea
 PUR-15463
 Order# 127675



120 Watts
\$36¹⁹ ea
 PUR-15463HD
 Order# 735613

5/16" Black Shock Cord

UV resistant, solid black.
 Order# 740364

43¢ ft **\$103⁹⁹**
 500 Ft Spool

Double UV cover, black w/green tracer.
 Order# 740363

43¢ ft **\$114⁵⁸**
 500 Ft Spool



Hamilton Marine Lobster Buooy Paint

Extra tough, long lasting, flexible coating, UV & weather resistant, low odor, fast drying, soap and water cleanup. Available in Red, Orange, Yellow, Green, Blue, Black or White.

Search# HM-LBP

\$14⁹⁹ qt **\$49⁹⁹** gal



SCAN THIS QR CODE!
 See just how tough our buoy paint is!



Long Line Snaps

Stainless steel wire.
 Sold by the 10/pack.



Size	Length	Order#
Small, 8/0	4.5"	761648
Medium, 10/0	4.75"	761649
Large, 12/0	5.25"	761650

Long Line

#7 twill cord. Sold in 1000 ft reel.



HML-CORLL
 Order# 118265

1/2" Black Fuzzy Rope

Sold in 1200 ft coils.
 For use in mussel farming.



AQC-FR50BK
 Order# 763256

Lantern Nets

Aquaculture lantern nets, for use in scallop farming.



Description	Order#
4mm 5 Tier	763277
4mm 7 Tier	769870
9mm 5 Tier	763278
9mm 7 Tier	769871

LD Hardshell Low Drag Buoys



6" x 13" or 7.25" x 22".
 Available in Green, Orange, Pink, Red, White or Yellow.
 Search# HML-BUOYL

Hairless Salted Pig Hide Lobster Bait

SAVE BY THE PALLET!



HML-HIDEBAIT
 Order# 740935

Fish Baskets

Round, orange plastic with handles and holes for draining, approx. 1 bushel capacity.

\$19⁹⁹ ea

Orange
 Order# 118243

Green
 Order# 763280



Fish Totes

Plastic. No Holes.

Starting At **\$15²⁹** ea



Color	Dimensions	Capacity	Order#
Black	28"L x 16"W x 11"D	70 Liters	118291
Gray	28"L x 16"W x 11"D	70 Liters	736466
Blue	28"L x 16"W x 14"D	85 Liters	760085

COOSA COMPOSITES Composite Panels

Use in place of plywood!

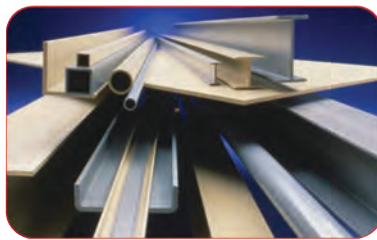
High density, polyurethane foam, reinforced with layers of fiberglass strands throughout. Lightweight, non-rotting.
 Search# CSA-



STRONGWELL Extren® Fiberglass Structural Shapes & Plates

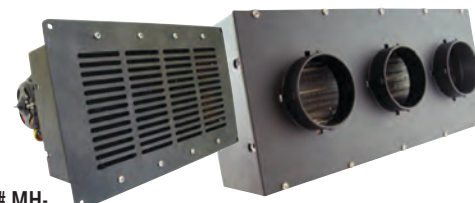
Get the wood out!

Lightweight, and high strength, low maintenance, corrosion and UV resistant. Available in many sizes and shapes.
 Search# SGW-



FREE HEAT from your engine's closed cooling system!

MARINE HEAT Flush mount or ducted models. From 28,000 - 40,000 BTUs



Search# MH-

FREEMAN MARINE EQUIPMENT Cast Aluminum Commercial Hatches

Flush, watertight, rugged and durable. Fast acting and easy opening.

15" x 24"
\$783

Reg 869.99
 FMN-2433-0002
 Order# 754527



24" x 24"
\$1470⁵⁸

Reg 1629.99
 FMN-2424-0002
 Order# 754529

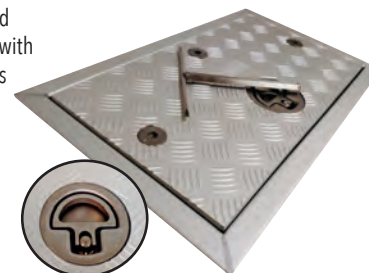


BOMAR BOWNE Tread Plate Access Hatch

Marine grade, anodized aluminum tread plate with 12-gauge 316 stainless steel frames. Wrench sold separately.

Starting At **\$473⁷⁸** ea

Search# BOM-S4



All discounts apply to current store prices. Typographical errors are unintentional and subject to correction.



National Oceanic and Atmospheric
Administration
U.S. Department of Commerce

November 2019 was cooler and drier, as U.S. continued its record-wet year Autumn wrapped up wetter and warmer overall

Climate Satellites | climate analyses and statistics

December 9, 2019 — November 2019 saw a bit of everything for the contiguous United States: Cooler and drier weather in the Midwest and Northeast, and warmer and wetter in the West and Southwest.



But: The month's overall dryness didn't stop the trend of a record-wet year to date.

Here are more highlights from NOAA's latest monthly U.S. climate report:

Climate by the numbers

November 2019

The average November temperature across the contiguous U.S. was 41.2 degrees F (0.5 of a degree below average) and ranked in the middle third of the 125-year record.

The average precipitation last month across the contiguous U.S. was 1.86 inches (0.37 of an inch below average) and ranked in the driest third of the November record.

Above-average precipitation fell across the Southwest, parts of the Rockies and Great Plains, as Arizona had its third-wettest November on record.

Below-average precipitation fell across the Pacific Northwest, the deep South, and parts of the Central Plains, Great Lakes and Mid-Atlantic.

Year to date and meteorological autumn


It was a relatively wet and warm meteorological autumn (September through November) across the contiguous U.S. The *total autumn precipitation* was 7.46 inches — 0.58 inch above average — ranking in the upper third of the historical record.

The *average autumn temperature* was 53.9 degrees F (0.4 of a degree above average), which ranked in the middle third of the historical record for the season.


The wet autumn extended the year's soggy stretch, as the U.S. continued its wettest *year to date* (January through November) on record, with a precipitation total of 32.14 inches (4.55 inches above average).


For the *year to date*, the average temperature was 54.2 degrees F (0.4 of a degree above average). This ranked in the middle third of the record.


U.S. Selected Significant Climate Anomalies and Events November and Autumn 2019


 AK warmest Jan–Nov. Utqiagvik and Cold Bay – warmest autumn. Anchorage, Kodiak, Homer, and Cold Bay – warmest Nov. Chukchi Sea ice extent was record low for Nov. Drought improved across the Panhandle.





 On Dec 3, approximately 12% of the CONUS was in drought; down 6% since Oct 29. Drought conditions expanded or intensified across parts of the southern to central Plains and HI. Improvements occurred across portions of the Southwest, Southeast, mid-Atlantic, TX, and OH.

 A “Bomb Cyclone” formed off the Pacific Coast on Nov 26 bringing heavy snow, hurricane-force winds, and rain to parts of the West. Major travel impacts felt during Thanksgiving week from CA to New England as storm system traversed the U.S.


 Widespread cold across central and southern U.S. Nov 11–13. Below zero temperatures were reported across northern Plains and Great Lakes.

 A strong low-pressure system off the East Coast brought coastal flooding and beach erosion from the NC Outer Banks to New England, ice and snow to the Northeast Nov 17–19.

 Remnants of Tropical Storm Raymond brought winds, heavy rain, and flooding to the Desert Southwest Nov 19–20.

 Kahului, Honolulu, and Lihue, HI, each had their warmest Jan–Nov on record. Kahului, Lihue, and Hilo were warmest for autumn.

The average U.S. temperature for November was 41.2°F, 0.5°F below average, ranking in the middle third of the 125-year record. The U.S. precipitation average for November was 1.86”, 0.37” below average, ranking in the driest third of the November record. The autumn average U.S. temperature was 53.9°F, 0.4°F above average, ranking in the middle third of the historical record. The autumn precipitation total was 7.46”, 0.58” above average, ranking in the upper third of the record.

 Puerto Rico remained drought free during Nov. A small area of moderate drought emerged in early Dec.

Please Note: Material provided in this map was compiled from NOAA's State of the Climate Reports. For more information please visit: <http://www.ncdc.noaa.gov/sotc>

An annotated map of the United States showing notable climate and weather events that occurred across the country during November 2019. To learn more, please visit <http://bit.ly/USClimate201911> (NOAA)

More notable climate events

- **A hot month, season and year for Alaska:** Anchorage, Kodiak, Homer and Cold Bay experienced their warmest November on record. Alaska, on the whole, had its fourth-warmest autumn on record. The state also continued its record-warm year to date, which narrowly eclipsed 2016.
- **Raymond brought record rainfall:** The remnants of Tropical Storm Raymond in the eastern Pacific Ocean helped set new rainfall records across southeastern Arizona in November.
- **Drought continued to improve:** By the end of November, approximately 12% of the contiguous U.S. was in drought, down 6% from the end of last month.

More > [Access NOAA's latest climate report and download the images.](#)

Media contact

John Bateman, (301) 713-9604

In Memoriam

It is with heavy heart that we must tell you longtime MLA member, DiSTEFANO Charles “Skip”, loving husband and father of four, passed away peacefully after a long battle with brain cancer on Saturday, December 14th, 2019. He was born on May 2, 1975 in Dedham, MA, the son of Charles DiStefano and Susan Beers Guptill. Skip was raised in Dedham, and graduated from Dedham High School, Class of 1993. He married Stacey Harper DiStefano on August 2, 2008 and they moved to Quincy to be closer to the ocean where he worked for many years as a lobsterman and a charter boat captain. Together they have four children, Dylan (9), Lyla (8), Dominic (6) and Julia (4).



Jesus or the beauty of the ocean. Fishing was not only his profession, but his passion. His kind heart and easy-going spirit shined through whether he was casting a line, spending time with his friends and family or talking about his faith. The way he lived his life serves as a reminder to all, to put others first and to love fully.

Skip will be forever remembered by his wife Stacey and their precious children, Dylan, Lyla, Dominic and Julia, by his parents Susan and her husband Pete Guptill of Florida and Chuck DiStefano and his wife Linda Sacca of Dedham and his sister Dori and her husband Jaime Maloney also of Dedham. He also leaves his paternal grandmother, Ellie DiStefano and several aunts, uncles, cousins and dear friends.

Skip was a devoted father, a dedicated husband and a loyal friend. He never missed an opportunity to teach his children about the love of

Jesus said to her, “I am the resurrection and the life. Whoever believes in me, though he die, yet shall he live, and everyone who lives and believes in me shall never die. Do you believe this?” John 11:25-26





December 16, 2019



DURATION OF WORK: The survey is expected to last approximately 9 days, subject to weather conditions. The survey could begin as early as **January 10, 2020** and end on or around **January 31, 2020** (assuming weather delays). The survey will occur during daytime and nighttime hours on a 24-hour schedule.

PUBLIC NOTICE TO MARINERS AND FISHERMEN

CHARACTER OF WORK: Alcatel Submarine Networks (ASN) notifies all interested parties that it will be conducting geophysical surveys along a pre-determined route for a future subsea telecommunication cable network. Side-scan sonar and potentially sub-bottom profilers will be used to collect the data. Data collected will be used to meet state and federal government permit application and environmental analysis requirements.

ASN and its partners are committed to communicating and working with local fishermen in the region during all stages of development of the proposed subsea cable. Although the survey vessel will attempt to avoid all fishing gear, we advise all mariners and fishermen operating in the area to plan accordingly when deploying gear in the vicinity of the vessel route. ASN has also hired a Fishery Liaison to assist with “on the water” communications between the survey vessel and the fishing industry. The Fishery Liaison will also place high-fliers on the pre-determined survey route for visual identification in the days prior to the survey.

WATERWAY AND LOCATION: The geophysical data samples will be operating within a 1,650-foot-wide corridor that extends from Lynn, Massachusetts to the shores off Rockport, Massachusetts. The “Survey Area” is depicted on the attached figure.

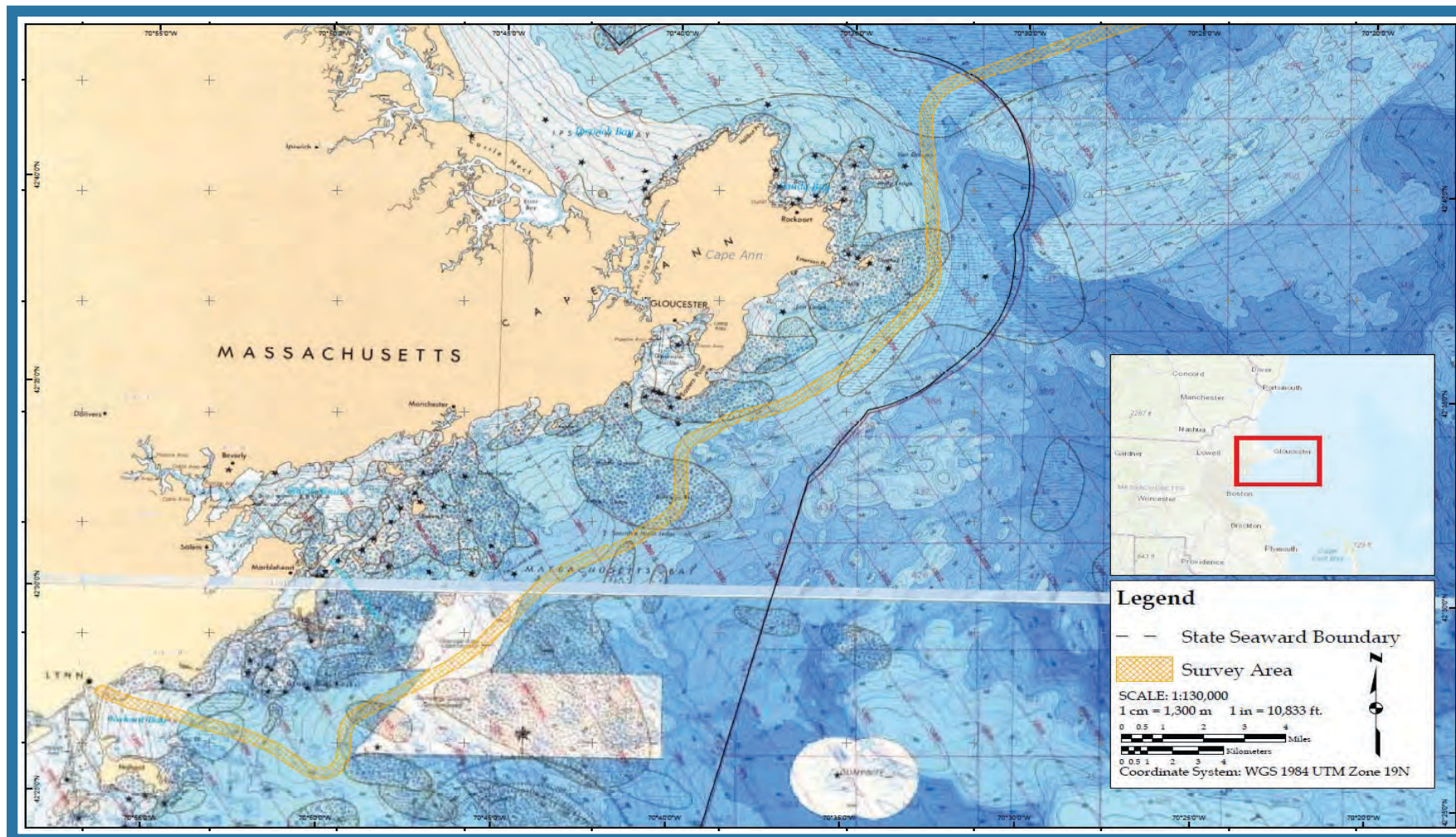
COMMUNICATION: On the days of survey operations, the R/V Megan T. Miller Captain can be contacted via VHF Channel 13 or 16.

If you have any questions, please contact Mr. Tom Hill, water-based Fishery Liaison for ASN, at (978) 697-5821. Jay Van Horn, land-based Fishery Liaison, can be contacted via email at jay.vanhorn@erm.com or cell phone at (860) 634-4934.

- Vessel:** R/V Megan Miller
- LOA:** 100 ft.
- Flag:** USA
- Standing by on VHF Channel:** 13 & 16
- Vessel Means of Communication:**
- Jim Miller: cell phone (516) 315-2396
- Dave Bernstein: cell phone (252) 422-8428



R/V Megan T. Miller





FISHING PARTNERSHIP



SUPPORT SERVICES

Join Us for These Upcoming Programs

First Aid and CPR Training

Wellfleet - January 14, 2020 - 2:00 p.m. - 6:00 p.m.
Wellfleet Public Library, 55 W. Main Street, Wellfleet, MA

New Bedford - January 21, 2020 - 8:00 a.m. - 12:00 p.m.
FPSS New Bedford, 38 Bethel Street, New Bedford, MA

Chatham - February 24, 2020 - 2:00 p.m. - 6:00 p.m.
Chatham Community Center, 702 Main Street, Chatham, MA

Plymouth - February 25, 2020 - 9:00 a.m. - 1:00 p.m.
FPSS Plymouth, 139 Court St., Plymouth, MA

Gloucester - February 28, 2020 - 10:00 a.m. - 2:00 p.m.
FPSS Gloucester, 2 Blackburn Center, Gloucester, MA

Vessel Stability

Plymouth - January 23, 2020 - 9:00 a.m. - 4:00 p.m.
Chamber of Commerce, 134 Court Street, Plymouth, MA

Chatham - February 4, 2020 - 9:00 a.m. - 4:00 p.m.
Community Center, 702 Main Street, Chatham, MA

Gloucester - February 14, 2020 - 10:00 a.m. - 5:00 p.m.
USCG Station, 17 Harbor Loop, Gloucester, MA

New Bedford - February 18, 2020 - 9:00 a.m. - 4:00 p.m.
FPSS New Bedford, 38 Bethel St., New Bedford, MA

For more information, or to register for a training, contact a Navigator in your area:

Chatham

[Serving the Cape & the Islands]
Morgan Eldredge and Shannon Eldredge
(508) 237-9402

Gloucester

[Serving the North Shore]
Nina Groppo and Maria Carpenter
(978) 282-4847

New Bedford

[Serving the South Coast]
Deb Kelsey (508) 884-6661, Jenny Amaral and Rob Jardin (508) 991-3043

Plymouth

[Serving Boston & the South Shore]
Lori Caron (781) 635-0011

Open Enrollment Ends Jan. 23

We can help you renew your plan, sign up for the first time, or shop for a new plan that's affordable for you and your family. Reach out to your local Navigator for help.

About Us

The mission of Fishing Partnership Support Services is to improve the health, safety and economic security of fishing families. Founded in 1997, the Partnership is headquartered in Burlington, MA, and maintains offices in the Massachusetts port communities of Gloucester, Plymouth, New Bedford and Chatham. For more information visit www.fishingpartnership.org.

[In association with Massachusetts Fishermen's Partnership]



Photo credit: Steve Kennedy

SAVE THE DATE!

NEW BEDFORD FISHING COMMUNITY CELEBRATION & HEALTH FAIR

A Day of Fishing Community & Family Fun!

February 8 / 10:00 a.m. - 4:00 p.m.

(Snow Date: February 29)

Kilburn Mill, 127 W. Rodney French Boulevard, New Bedford

Fishermen & Industry Representatives | Prizes | Food | Seminars
Health Insurance Enrollment | Games | Self Care/Health Screenings

About Us

The mission of Fishing Partnership Support Services is to improve the health, safety and economic security of fishing families. Founded in 1997, the Partnership is headquartered in Burlington, MA, and maintains offices in the Massachusetts port communities of Gloucester, Plymouth, New Bedford and Chatham. For more information visit www.fishingpartnership.org.

[In association with Massachusetts Fishermen's Partnership]



NEW ENGLAND PROPELLER, INC.

Distributor of Michigan Propellers

Inboard • Outboard



Next Generation 3D Computerized Propeller Analyzer
Computerized Dynamic Balancing

Marine Fuel Tanks

Custom Fabricated & Tested to U.S.C.G Specifications
By Capeway Welding

- Marine Propeller Sales & Repairs - **4000 Props in Stock**
 - Sierra Engine Parts for All Outboards & IOs
- CDI Electronics • Camp & Godfrey Zincs • NGK Spark Plugs
 - Duramax Cutless Bearings • Spurs Line Cutters
- PSS Dripleless Shaft Seals • Buck Algonquin - Struts, Rudders & Stuffing Boxes
 - S/S Shafting • Drive Savers • Globe Impellers



9 Apollo Eleven Rd., Plymouth, MA 02360

Tel: 508-747-6666 800-635-9504 - neprop.com

The Bureau of Ocean and Energy Management Studies

Development Plan 2020-2022

This information is taken directly from the 317 pages –

Bureau of Ocean Energy Management (BOEM) Mission: *The Department of the Interior's (DOI's) BOEM is responsible for managing the development of the Nation's offshore energy and mineral resources in an environmentally and economically responsible way. These resources include oil and gas; wind, wave, and current energy; and sand, gravel, and other minerals.*

Environmental Studies Program (ESP) Vision & Background

Environmental stewardship is at the core of BOEM's mission. Diverse Federal laws task BOEM with protecting the marine, coastal, and human environments. BOEM utilizes the best available science to support sound policy decisions and manage Outer Continental Shelf (OCS) resources. Since 1973, Congress has funded an ESP to produce research needed for decision support. The ESP has provided over \$1 billion for research to this end since its inception in 1973. BOEM facilitates top-quality research by talented scientists from a range of disciplines, which is targeted to support policy needs and priorities.

BOEM's ESP was mandated after 1978 by Section 20 of the OCS Lands Act (OCSLA) to conduct studies that will provide the information needed to assess and manage impacts on the human, marine, and coastal environments from offshore energy and marine mineral development. Section 20 specifically calls for studies addressing impacts on marine biota that may result from chronic, low-level pollution or from large spills associated with OCS production, including onshore facilities. Section 20 also calls for studies to monitor human, marine, and coastal environments. These studies provide time series and data trend information for identifying significant changes in the quality and productivity of those environments and identify the causes of these changes.

BOEM's research mandate under OCSLA is fundamentally to assess and understand how the Bureau's decision making impacts the environment, including the human environment, and how those impacts can be avoided or minimized. BOEM accomplishes this by recognizing that its decisions and policies contribute to the definition of the regional socio-ecological systems that it stewards. The ESP, together with environmental assessment and regulation, constitute BOEM's environmental program and ensure that environmental protection is a foremost concern and an indispensable

requirement in BOEM's decision making. The environmental program as a whole is a core component of BOEM, whose overall mission is to manage development of OCS energy and mineral resources in an environmentally and economically responsible way. The ESP's core values are responsible stewardship, decisions informed by science, and a commitment to integrity and ethics in all activities.

About the Studies Development Plan (SDP)

SDP Overview

The BOEM SDP is a strategic planning document released annually by the ESP. The SDP is used internally to outline the program's scientific direction, identify information needs, and prioritize research for the upcoming two FYs. All regional offices provide substantial input and critical review of the document. The information in the SDP is used to formulate annual National Studies Lists (NSLs) that describe ESP projects eligible for funding in a given FY. Proposed studies within the SDP are peer reviewed by selected BOEM subject matter experts (SMEs).

An overview of BOEM's proposed national and regional research is provided in Chapters 2–6. Appendix I includes tables summarizing new studies that are projected to begin in FY 2020 or FY 2021, and Appendix II includes the study profiles for each region. All studies proposed in this SDP are subject to the availability of funds. Study needs may be adjusted after the release of this document to respond to shifting priorities, emerging information needs, and the ESP budget. This document is also a critical communication tool for the scientific community and other external stakeholders and partners.

Additional information on BOEM's ongoing studies can be found at our studies website at www.boem.gov/Current-Research-Ongoing-Environmental-Studies. Access to completed ESP products through BOEM's website is provided by the ESP Information System (ESPIS) at www.boem.gov/espis.

For a complete copy of the Plan go to- <https://www.boem.gov/sites/default/files/environmental-stewardship/Environmental-Studies/FY-2020-2022-SDP.pdf>



MLA CLASSIFIEDS

PLEASE CHECK YOUR AD TO MAKE SURE IT IS CURRENT
Send ads to tracey.abboud@lobstermen.com

Ads will run for 5 months & then automatically be deleted unless you call the MLA office to renew your ad. 781-545-6984 or email ads to tracey.abboud@lobstermen.com

Classified ads are a free benefit to MLA Members and Non-members are a flat \$25.00

**All ads are subject to review prior to placement*

AD #1 (12/19) FOR SALE- PRICE DROP- 1950 Buick Special- 55,000 original miles Approx; 75% restored Call/info 781-733-1498 / email lggyburton@aol.com \$8,500 OBRO

AD#2 (11/19) HELP WANTED- Fishing Boat/Scituate MA-Must be reliable/drug/ alcohol free w/ valid drivers license & own transportation. % of pay based on experience. E-mail Hiflyer2@verizon.net

AD#3 (9/19) FOR SALE- 40 ft. Stanley Greenwood fiberglass over wood. 220 John Deere engine 14 in. pot hauler-power invert-er- Microwave in fishhold/ liferaft/Epirb more info call 603-714-2247

AD#4 (9/19) FOR SALE - Hydraulic Components, parts and service. Pumps, Motors, Valves and Accessories. Hydraulic Hoses made while you wait. Great Prices - Same day service (in many cases)- Wide selection of in-stock items. Rebuilt items are occasionally available. Call ROSE MARINE, Gloucester, MA 877-283-3334

AD#5 (11/19) FOR SALE-100 plus 48"x24"x15" traps Like new/lightly fished 65.00 each Text Bill @ 774-264-0083

AD#6 (11/19) FOR SALE - 32 "Lobster Boat -Fiberglass Maine lobster or tuna boat Holland 1984. 454 gasoline engine 3 years old, 12" pot hauler. Currently used for lobster fishing everyday. New boat coming, must sell. 28,000.00 Call 978-884-2988

AD#7 (11/19) FOR SALE - BUNGEE CORD ON SPOOLS. Made in New England area. Call Jonathon "Mr. Bungee" 401-447-7973 or Jon@marineropeinternational.com 5/16" x 300'ft \$35.00/spool 5/16"x 500'ft \$50.00 spool All sizes, colors to choose from. Located in Cranston, RI

AD#8 (11/19) FOR SALE- Area 1 lobster license-approx; 75 traps, 19ft Midland 70 HP Suzuki 4 stroke & trailer. Asking \$24,000 Call Pat@978-879-9623

AD#9 (1/20) FOR SALE- 200 Used pono's -3 footers- hoop gear-shrimp mesh heads. All in great shape. Some \$30 & \$40-multiple colors. Call Matt @ 339-613-7122

AD#10 (10/19) FOR SALE-1997 Mariner Commercial 55 hp o/b motor Rope Start, Tiller Model, Long Shaft Been in storage for 6 yrs Has a replacement lower unit\$10002001 Tohastu 18 hp 2 stroke o/b motor Rope Start, Tiller model, Short Shaft Been in storage 3 yrs \$800 Call (508)-246-4009

AD#11 (8/19) FOR SALE- 10 totes of 200 count 12/0 Mustard J hooks all pinned # 3998ID good condition \$ 80.00 each, also 2" 3 hp Hydraulic Pacer pump used once, pump was to small for adequate flow. New \$ 600 will sell for \$ 375.00. Call/ text Mike 508-922-1344

AD#12 (1/20)FOR SALE- MA State Coastal Lobster Permit Area 1 800 trap allocation, has great history. Asking \$20,000 Call/Text Frank @ 978-807-0301

AD#13 (9/19) FOR SALE- 36' Harris Lobster boat 220 John Deere engine 2 1/2 -1 twin disc transmission \$20,000. 339-224-0224

AD#14 (11/19) FOR SALE-Gillnet Gear 24" Crosley lifter, roller/alum picking table & s.s.alum mounting brackets/ss spreader bar. 6- seaplast #660 vats 12-steel disk anchors 70-80 lbs 95 monk nets 10",11",12"40-round fish nets 6.5",7",7.5"Would like to sell as a package \$24,500. Text Bill 774-264-0083

AD#15 (8/19) FOR SALE-40 3ft. traps/all hoop gates/most have rope/good shape \$25.00 each Bill @ 339-793-1291

AD#16 (9/19) FOR SALE-301-2-F Transmission 2 point 69 to 1/\$1,000. Call Skip 781-844-8162

AD#17 (9/19) FOR SALE-State coastal lobster permit-100+traps,lines&buoys. \$18,000.00 617-846-3714@5:00 P.M.

AD#18 (8/19) FOR SALE- 8.2 Detroit Diesel - 320 HP with after-cooler, running takeout with Borg Warner transmission, runs great, no smoke. have video of engine running and wet exhaust - \$3,000.00 Also, spare 8.2 Detroit Diesel, (rebuilt by Lew Bacon) with Twin Disc transmission and spare starting motors - \$3,000.00 Located in Gloucester Call / text Dave at 603-422-4335

AD#19 (9/19) FOR SALE- 10/ 15 pot ground lines no knots \$25.00 each Call 781-831-1609

AD#20 (9/19) FOR SALE-Gill net lifter, Bandolier style, new \$1,000.00-Mantis style shrimp dredging gear -net culling table- 2 vats-plumbed circulation W/ trailer \$1,500.00- Propellar 34x34, right hand 2 1/2 in bore-4 blade-\$1,500.00-3/4 net chain sweep W/5in Cod end\$500.00 - 6 new gill nets W/ 6in mesh\$200.00 each & misc: nets Call Bill @ 508-264-1076

AD#21 (1/20)PLACE YOUR AD HERE

AD#22 (8/19) FOR SALE- 100 traps 48" yellow double parlor Good shape. \$ 40.00 firm. Serious inquiries only. Call/leave message No calls after 6 p.m. Mike 781 249 2818

AD#23 (7/19) FOR SALE-Fiber-glassed Bait cooler, holds 18 boxes -3 high \$1,500.00 617-688-0914

AD#24 (7/19) FOR SALE- 100 Lobster traps 3ft., w/rope \$15.00 each 617-688-0914

AD#25 (7/19) FOR SALE- Brand new skiff - built at the MLA weekend \$500.00 617-688-0914

AD#26 (8/19)FOR SALE- Custom made Wright Trailer. Just over 1 year old, used 3 times, \$2,500. Deck Dimensions 82" Wide by 16' long. 2-Dexter 3500# EZ Lube Axles. Auto FSA Electric Brakes. Spring Suspension. ST205/75R-15 LRC Radial Tires, 15" Steel Wheels, spare tire included. 7K Drop Leg Jack. Adjustable Height Coupling (Pintle Ring or Ball). Diamond Plate Fenders with Sealed Seams and Center Support. Pocket & Rub Rail in Front of & Behind Fenders. Sealed Modular Wiring Harness with Rubber Mounted LED Lights, Breakaway Kit w/ Charger & Tester and 7 RV Style Plug. Pressure Treated Planks. Ketcham Traps, 111 Myrtle St, New Bedford MA, phone 508-997-4787.

AD#28 (8/19) FOR SALE- Outer cape lobster permit with 406 trap tag allowance for sale. Asking 200k , willing to negotiate comes W/ traps. Zach 774-216-0913

AD#29 (9/19) FOR SALE- MA Coastal Lobster Permit Area 1 800 trap allocation asking \$30,000. Or B/O John Moran 401-525-0981

AD#30 (9/19) FOR SALE-34' Aluminum Lobster boat CAT 3208T (320hp) built by Gladding & Hearn 1982. 14" hauler & hydraulic wash-down pump asking \$ 90,000 or B/O- MA Coastal Area 1 Lobster Permit w/800 trap allocation. John Moran 401-525-0981

AD#31 (10/19) FOR SALE- 25 ft BHM 180 HF 453T Detroit engine-600 hrs. on rebuilt engine. Furuno radar-new- 4ft extended hull Garmin plotter-new 2 Furuno GPS Sitex depth finder- Auto-pilot VHF radio CB radio New hydraulic steering- new wash down pump-dripless shaft bearing-new battery-new alternator-billage alarm 150 gal., fuel tanks-14ft deck area- 2 propellers-Fished daily. \$23,500 or \$37,500.00(w/ dragging gear) Call Frank @ 203-868-8481

AD#32 (9/19) FOR SALE-Sternman /helper wanted for Nahant based lobsterboat F/V Walter Marie II . Experience is preferred. e mail joel.w.marie@gmail.com or phone 781 581 0324

AD#33 (10/19)-Scallop quota available for leasing -e-mail hiflyer2@verizon.net

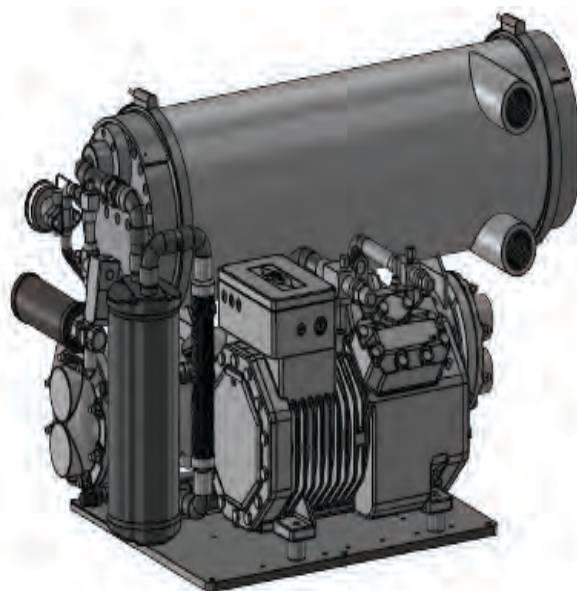
AD#34 (10/19) HELP WANTED-Sternman/Commercial Lobsterman Position. Experience Preferred but not necessary. If dedicated, honest and hardworking I will train. Must have own transportation and be Drug Free. Gloucester. Robert @ 6174179630.



New England Marine Engineering & Supply, Inc.

Marine • Industrial • Commercial • Refrigeration

10 TON ELECTRIC TITANIUM RSW INTEGRATED MARINE SYSTEMS



"New England Marine Engineering & Supply, Inc & Integrated Marine Systems, Inc is proud to announce & debut the new IMS 10 Ton Titanium Electric RSW at the 2018 Seafood Processing North America Show on March 11-13 Booth 1875. Come see us and be the first to view the latest IMS system to be introduced to the industry for the fishing vessels ranging from 40' - 80'.

It's going to be the talk of the show."

133 North Front Street, New Bedford, MA. 02740

www.nemesinc.com 1.800.540.8893

RECIPE of the MONTH



Truffled Lobster Risotto

Ingredients:

- 2 (1.5 pound) Massachusetts caught lobster
- 1 uncooked 12 inch pizza shell (homemade is great)
- 3/4 cup Roasted Garlic Pesto (recipe below) or favorite store brand
- 4 tablespoons chevre cheese
- 1/2 bell pepper, diced
- 4 oz mozzarella cheese, cut in half moons

Roasted Garlic Pesto:

(make ahead of time)

- 1 large garlic bulb
- 1/2 cup olive oil
- 4 oz pine nuts
- 6 oz fresh Parmesan cheese, grated
- 2 firmly packed cups fresh basil, chopped
- Salt to taste

Directions:

Cook and pick your lobster. Place shell on pizza stone or pan and spread on the garlic pesto. Place pepper rings around the shell and top with the chevre cheese and lobster meat. Sprinkle evenly with mozzarella. Bake at 350 degrees for 25 to 30 minutes.

Slice off the top of the garlic bulb, rub with oil and wrap it in foil. Roast in 350 degree oven for 45 minutes to an hour. Remove and set aside. Place pine nuts and half of the Parmesan in a food processor and pulse 4 or 5 times. Remove the garlic from the foil and squeeze the pulp out of the cloves into the food processor. Add the basil leaves and pulse 3 or 4 more times. Add the remaining Parmesan and the rest of the oil and pulse 4 times or until smooth.



THE *Specialists*
FROM BUOY TO TRAP

*Built the Best, Built to Last,
Built Your Way.*

PROVEN PERFORMERS! Rockbottom Runners



Our precision formulation and process has been refined over the years to provide the optimum balance of strength and flexibility... – and the vise test shows it

Over **20 YEARS** of fishing;

Well over **HALF A MILLION** sold



Could you do this with any other concrete runner?



SOLID STEEL CORE - TOUGH POLYMER COATING



Over **6 YEARS** of fishing.

Over a **QUARTER MILLION** sold



OCEAN-TESTED for years... aircraft carrier decking and pilings in the marine borer intense Panama Canal Zone.



The toughest species of jungewood we've found ... and the only kind we sell.

**We are constantly listening to our customers:
Your feedback + continuous improvement
= proven reliability**

Here to serve you!

Jerry Wadsworth (207) 542-0842 jerryw@friendshiptrap.com
Jimmy Emerson (207) 483-6555 jemerson@friendshiptrap.com
Mike Wadsworth (207) 542-0841 mikew@friendshiptrap.com

Friendship Office: (800) 451-1200; (207) 354-2545

Columbia Falls Office: (800) 339-6558

Visit our website: www.friendshiptrap.com



Find all the Fish!

B A C S S A B A E S K C A L B L M J S C U D G
 O R A T L A N T I C M E N H A D E N C S F I O
 T S L R M O N O P Q R L T V W X E U C W G E U
 R B T R P A N I S H M A C K E R E L S E S R O N
 O V M R C B R O C N I V O L E B R T S A I O D
 O V R T S O B H A D S T A L M E P B A K F H E
 W I N T E D F L O U S L O H D S R U G F T A G
 B A R C E O H S E S R O H N R U T T C I S D R O
 A V L A P W M K L R F T U M R R A C S S T R O
 T U O R T B K S K S P O T E T G M H R H R E U
 L S B C T L E P A G L W I H O E E E I T I D L
 A D S R O A R A E F I S M P S F R R H U P N D
 N E T O P C E N R P R R S T O I R T Y E U E
 T T E A S H D E T F R E E S G C C I B H D O R
 I T S G P S M I O L O T M O O T A M K S B L H
 C O K E P M V S N D N S A M T E N G I I A F L
 R P S Y U U I O R E T A E S U R E F E F S R E
 O G A S C E K R L R C O A K A H E P F G S E R
 A L H G F A M H H C R L A B T U E U B O P T B
 K E S E G B O M S S A T L A L R R D T D O N T
 E M U R D D E R I O N D E B R A K S I Y I Y
 R C O A S H E R F L O R A T L T B T G N S W S
 B B A S T H E R E S P O E A T G A U N I O R T
 W S H O C T S T U R G E H H T K L R M P B E E
 X V O L G C R O L S P O R E T M O G O S O H V
 E N O G L E N A B C I R E M A R S E L J R L X
 T U O R T A E S D E T T O P S B O O S H A R K
 D A E R G R E A N M L O B S H H O N V K I H O
 O M R D R A T L A N T I C H E R R I N G H J F

- American Eel
- Atlantic Croaker
- Atlantic Herring
- Atlantic Menhaden
- Black Sea Bass
- Bluefish
- Horseshoe Crab
- Lobster
- Northern Shrimp
- Red Drum
- Scup
- Shad and River
- Shark
- Spanish Mackerel
- Spiny Dogfish
- Spot
- Spotted Seatrout
- Striped Bass
- Sturgeon
- Summer Flounder
- Tautog
- Weakfish
- Winter Flounder



Can you match the fish to its facts?



SPINY DOGFISH



NORTHERN SHRIMP



AMERICAN LOBSTER



AMERICAN SHAD



STRIPED BASS



ATLANTIC MENHADEN



ATLANTIC STURGEON



AMERICAN EEL



BLUEFISH



HORSESHOE CRAB



WINTER FLOUNDER



BLACK SEA BASS

1. What fish lives most of its life in freshwater and returns to the ocean to reproduce?
2. What animal has two claws – one for crushing and one for pinching?
3. What fish is nicknamed chopper because of its razor sharp teeth and powerful jaw?
4. What fish dates back to over 70 million years ago, and can reach a size of 15 feet in length and weigh over 800 pounds?
5. What fish, also known as rockfish, has its largest spawning population in the Chesapeake Bay?
6. What small schooling fish is an important food source for many fish species and is also used to make omega-3 vitamin supplements?
7. What popular Mid-Atlantic fish begins its life as a female and changes to become a male at about 6 years of age?
8. What small but important crustacean uses paddle-like legs, called pleopods, to swim?
9. What flatfish is known for its ability to match its color and pattern to whatever it rests on?
10. What fish lives most of its life in the ocean and returns to freshwater to reproduce?
11. What animal is more closely related to spiders than crabs, and has been around for over 200 million years?
12. What fish gives birth to live young instead of laying eggs?

Restoring Atlantic Coastal Fisheries (www.asmfc.org)

Answers: (1) American eel, (2) American lobster, (3) Bluefish, (4) Atlantic sturgeon, (5) Striped bass, (6) Atlantic menhaden, (7) Black sea bass, (8) Northern shrimp, (9) Winter flounder, (10) American shad, (11) Horseshoe crab, (12) Spiny dogfish.



ANNUAL WEEKEND & INDUSTRY TRADE SHOW

SAVE THE DATES
April 16-19, 2020

The 2020 Massachusetts Lobstermen's Associations Annual Weekend and Trade Show will be held at the
**Resort and Conference Center,
35 Scudder Ave, Hyannis, MA 02601**

This is an exciting show that focuses on the fishing industry in New England. The event will bring together experts and professionals from different parts of the region to come together and discuss about the new platform and opportunities that will play an important role in the advancement of the commercial fishing industry.

The attendees of the show will also get a golden opportunity to enhance their knowledge and gain relevant and useful information about the commercial fishing industry. The Massachusetts Lobstermen's Association Annual Weekend and Trade Show will also help its exhibitors to connect and interact with each other and establish a good relationship with the attendees. This show significantly contributes in the development of the commercial fishing industry and the expansion of the businesses of the exhibitors.

ALL reservation forms and early vendor registration promotions are available online at www.lobstermen.com

Massachusetts Lobster Bands (**SOLD OUT UNTIL SPRING 2020**)

As part of the MLA promotional efforts the MLA again has made available the Massachusetts "GREEN" lobster bands and is sold out until the spring of 2020. The MLA supports this on going promotion to truly identify a "locally" harvested lobster.

Bottom Line
Super 46 Wesmac
C18 CAT



WHEN YOUR ENGINE MEANS BUSINESS, MILTON CAT MEANS MORE.

Milton CAT is the Northeast and upstate New York Caterpillar dealer. Our complete range of marine power systems solutions is backed by a team with exceptional knowledge and experience.

- More engine choices.
- More fully equipped and staffed locations.
- More support for your commercial fishing vessel, ferry, tug, or pleasure craft.



**Stock and Custom-Built Traps
Lobster and Specialty Traps
Aquaculture Supplies
Huge Inventory of Commercial
Fishing Supplies
Four Locations in Maine**



**BROOKSTRAPMILL.COM
(800) 426-4526**