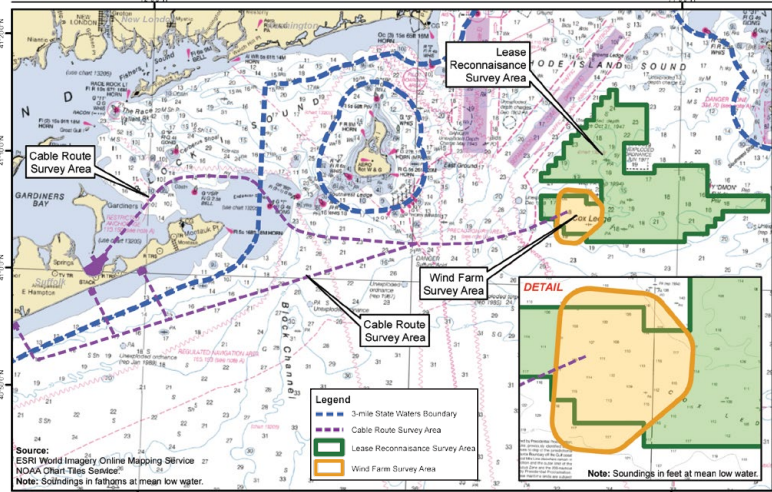




# SOUTH FORK WIND FARM

## Information for Mariners



## OVERVIEW

The South Fork Wind Farm (SFWF) is a planned offshore wind farm located 30 miles east of Montauk that will consist of approximately 15 wind turbines and a subsea transmission system able to deliver 90 MW of clean energy to East Hampton. Marine survey activities are scheduled to begin in Summer 2017. Marine construction is planned to start 2021.

Notices to Mariners are submitted as needed to the U.S. Coast Guard, distributed to the fishing community and interested mariners, and posted on our website at:

[dwwind.com/information-for-mariners](http://dwwind.com/information-for-mariners)

## MARINER SAFETY

Deepwater Wind will be performing survey operations along the cable route and project site.

During those times, all mariners transiting or fishing in the survey area are requested to provide a wide berth to survey vessels as they will be limited in their ability to maneuver (VRAM) and towing gear out to 300 meters behind the vessel.

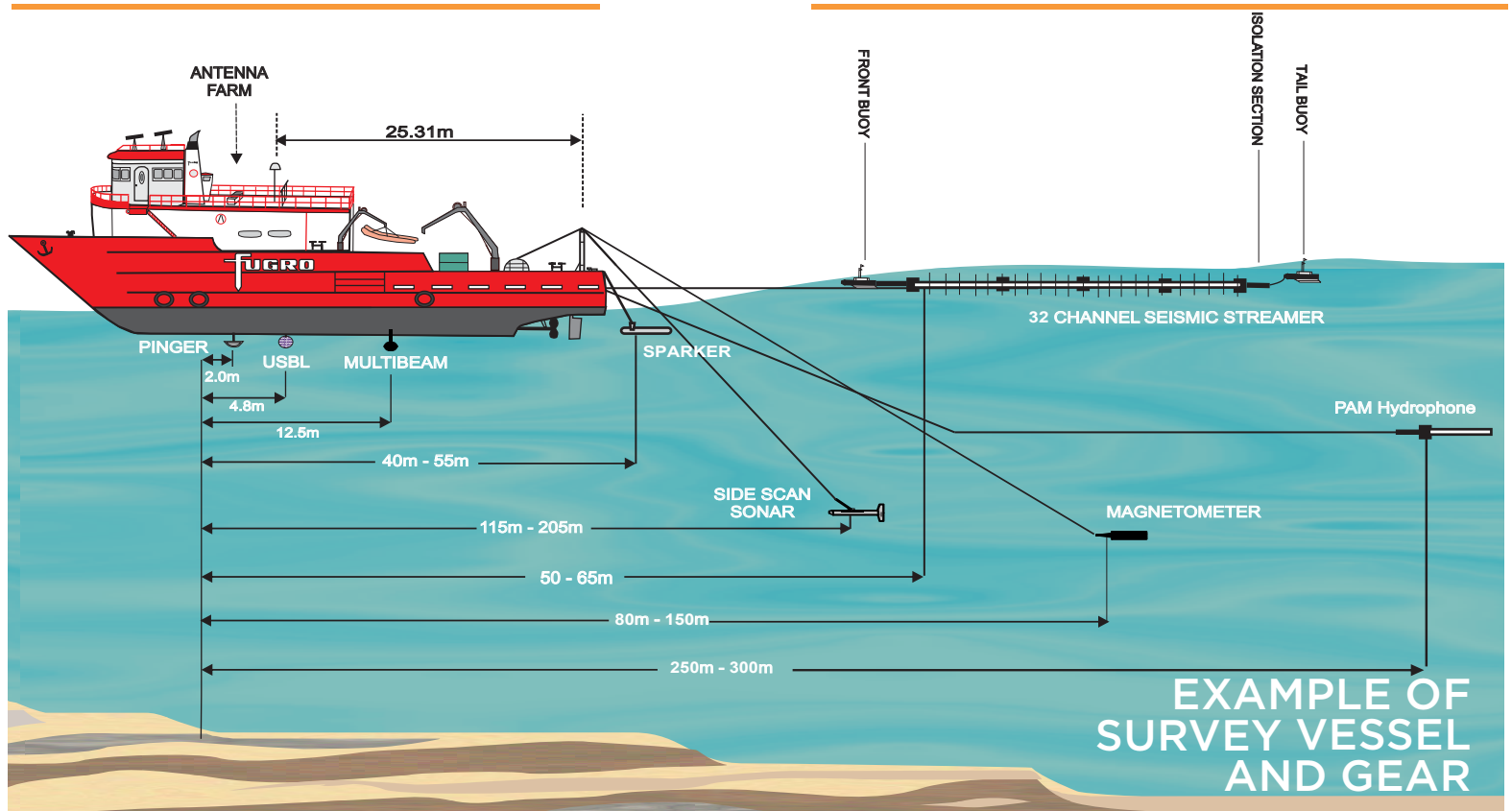
Vessels in the vicinity of the survey vessel should operate in a manner that will not endanger the vessel or associated equipment.

## CONTACT

**JOHN O'KEEFFE**  
 MANAGER, O&M AND MARINE AFFAIRS  
 Phone: 401.868.4228  
 Email: [jokeeffe@dwwind.com](mailto:jokeeffe@dwwind.com)

FOR FISHERIES  
 RELATED  
 INQUIRIES,  
 CONTACT:

**BETH CASONI**  
 FISHERIES LIAISON  
 Phone: 508.738.1245  
 Email: [fisheries\\_liaison@dwwind.com](mailto:fisheries_liaison@dwwind.com)



**EXAMPLE OF SURVEY VESSEL AND GEAR**