

NOTICE TO FISHERMEN

Geophysical survey to start August 15, 2016
 Estimated duration 35 days
 (weather permitting)



RV Ocean Researcher

230 ft. Flag: United Kingdom

Bridge VSAT phone: 011 44 1493 236011

Vessel email: master@researcher.gardline.co.uk

Standing by on VHF channel 16

Site Assessment and Geophysical Survey of the Bay State Wind area

For the next three years DONG Energy will collect data and perform an assessment of the physical, biological and economic characteristics of BOEM lease area OCS-A0500 south of Martha's Vineyard (see chart) to evaluate suitability for the construction of an offshore wind farm. As the first step of data collection DONG will conduct a geophysical survey in August and September 2016. A local Fishing Industry Representative (FIR), Steve Welch, will act as the onboard fisheries point of contact, advising the vessel master to avoid gear conflicts.

Fishermen working in the Survey Area are requested to provide fixed-gear coordinates to:

Steve Welch, FIR, aboard RV Ocean Researcher

Bridge VSAT phone or VHF channel 16

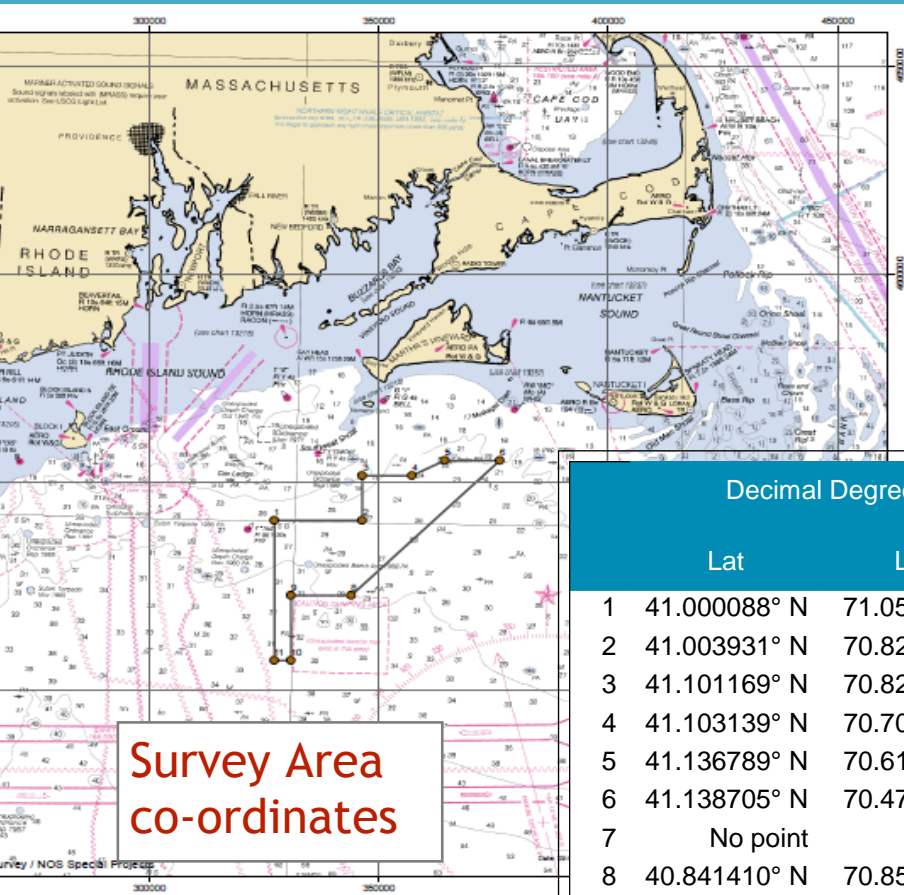
In advance of operations, please contact:

John Williamson, DONG Energy Fishery Liaison

Cell: 207 939-7055 john@seakeeper.net



Please add your contact information to our file of fishermen in the lease area.
 Fishermen's information is respected as confidential.



**Survey Area
co-ordinates**

	Decimal Degrees		Degrees, Minutes, Seconds	
	Lat	Long	Lat	Long
1	41.000088° N	71.054600° W	41° 00' 00.32" N	71° 03' 16.56" W
2	41.003931° N	70.826429° W	41° 00' 14.15" N	70° 49' 35.14" W
3	41.101169° N	70.829121° W	41° 06' 04.21" N	70° 49' 44.84" W
4	41.103139° N	70.700567° W	41° 06' 11.30" N	70° 42' 02.04" W
5	41.136789° N	70.615653° W	41° 08' 12.44" N	70° 36' 56.35" W
6	41.138705° N	70.472722° W	41° 08' 19.34" N	70° 28' 21.80" W
7	No point	No point	No point	No point
8	40.841410° N	70.850425° W	40° 50' 29.08" N	70° 51' 01.53" W
9	40.838793° N	71.006912° W	40° 50' 19.65" N	71° 00' 24.88" W
10	40.698345° N	71.002689° W	40° 41' 54.04" N	71° 00' 09.68" W
11	40.697598° N	71.045274° W	40° 41' 51.35" N	71° 02' 42.99" W

Geophysical survey - Profile view

