

# Bay State Wind

## NOTICE TO FISHERMEN

Geophysical survey to start August 15, 2016  
Estimated duration 35 days (weather permitting)  
RV OCEAN RESEARCHER

### Survey Vessel Details:

RV OCEAN RESEARCHER  
LOA 230 ft. Flag: United Kingdom

Bridge VSAT phone: 011 44 1493 236011  
Satellite phone: 011 870 773 154 143  
Vessel email: [master@researcher.gardline.co.uk](mailto:master@researcher.gardline.co.uk)  
Standing by on VHF Channel 16

#### When the survey is taking place

RV Ocean Researcher will be conducting a geophysical survey in an area south of Martha's Vineyard for 35 days (weather permitting) starting August 15, 2016.

#### Why the survey is taking place

In August and September an exploratory geophysical survey will gather data on sea bed conditions within a portion of the BOEM Massachusetts Wind Energy Area (WEA), lease area OCS-A 0500. This information will help to identify potential locations for future siting of wind turbines.

#### Survey design: vessel transits

The survey vessel will make straight transects across the Survey Area in grids, running both NW-SE and NE-SW, spaced about a half-mile apart.

#### Vessel turning radius

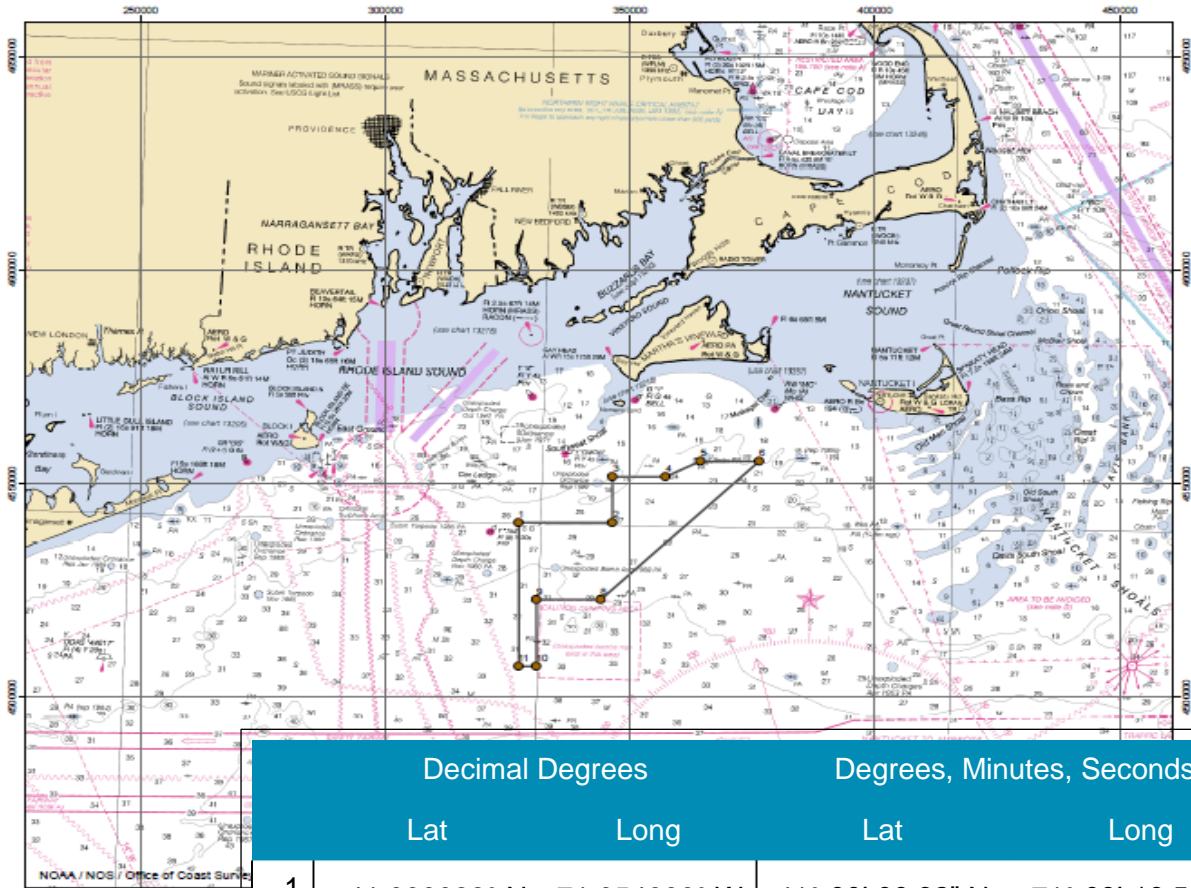
The survey vessel may venture outside of the Survey Area and may require a turning radius up to 2nm to complete transects. Extreme care will be taken to avoid fixed fishing gear during such maneuvers. Mariners are requested to observe caution when in the vicinity and contact the RV Ocean Researcher Bridge with questions.

#### The survey equipment to be used

The survey vessel will tow sensors through the water column (above the sea bed). The sensors will include multi-beam and side scan sonars, magnetometer, and high and medium frequency sub-bottom profilers.

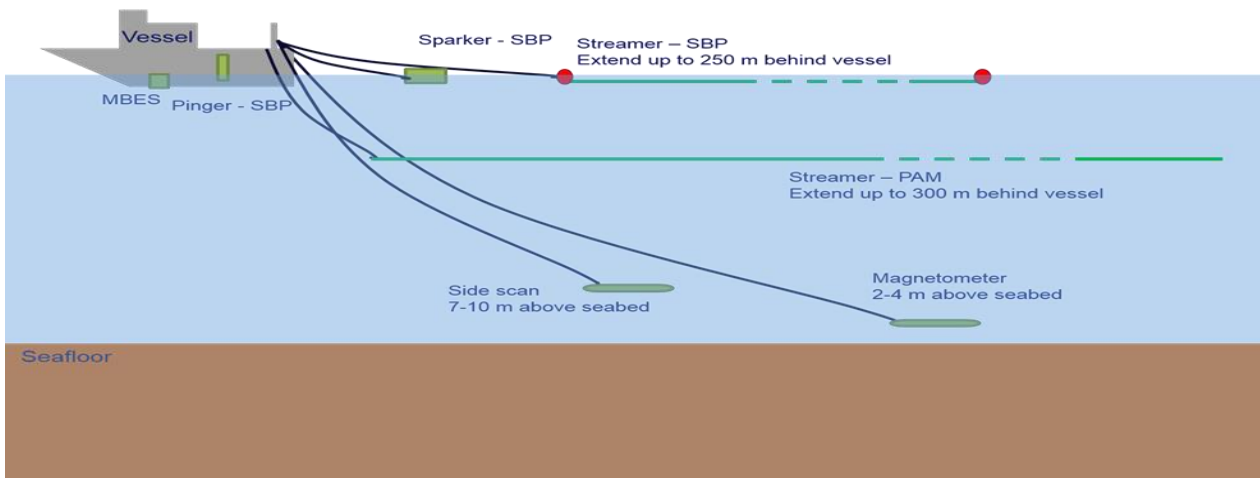
In addition to the above, grab samples of seabed will be taken at select locations, each sample about 0.1 cubic yard.

# Survey Area co-ordinates



	Decimal Degrees		Degrees, Minutes, Seconds	
	Lat	Long	Lat	Long
1	41.000088° N	71.054600° W	41° 00' 00.32" N	71° 03' 16.56" W
2	41.003931° N	70.826429° W	41° 00' 14.15" N	70° 49' 35.14" W
3	41.101169° N	70.829121° W	41° 06' 04.21" N	70° 49' 44.84" W
4	41.103139° N	70.700567° W	41° 06' 11.30" N	70° 42' 02.04" W
5	41.136789° N	70.615653° W	41° 08' 12.44" N	70° 36' 56.35" W
6	41.138705° N	70.472722° W	41° 08' 19.34" N	70° 28' 21.80" W
7	No point	No point	No point	No point
8	40.841410° N	70.850425° W	40° 50' 29.08" N	70° 51' 01.53" W
9	40.838793° N	71.006912° W	40° 50' 19.65" N	71° 00' 24.88" W
10	40.698345° N	71.002689° W	40° 41' 54.04" N	71° 00' 09.68" W
11	40.697598° N	71.045274° W	40° 41' 51.35" N	71° 02' 42.99" W

Geophysical survey equipment overview - Profile view



RV Ocean Researcher

**Contact the Onboard Fishing Industry Representative**

Fishermen are requested to remain aware of these survey operations and maintain a prudent distance from the RV Ocean Researcher and the streamer towed behind the vessel. A local Fishing Industry Representative (FIR), Steve Welch, will act as the onboard fisheries point of contact, advising the vessel master to avoid gear conflicts.

Fixed gear fishermen working in the Survey Area are advised to contact **FIR Steve Welch** through the RV Ocean Researcher bridge with gear location coordinates:

**RV Ocean Researcher VSAT phone 011 44 1493 236011  
Standing by on VHF channel 16**

In advance of survey operations local fishermen with questions may also contact:

**John Williamson, DONG Energy Fishery Liaison  
1 207 939-7055 john@seakeeper.net**

**Please add your contact information to our file of fishermen in the lease area.  
Fishermen’s information is respected as confidential.**



## DONG Energy is lessee to develop an offshore wind farm in federal waters

In April 2015, the Bureau of Ocean Energy Management awarded a lease for area OCS-A 0500, in the Massachusetts Wind Energy Area (WEA), to RES American Developments. In May 2015, BOEM announced the transfer of assignment of that lease to DONG Energy. Comprising 187,523 acres (222 sq nm), the lease area is the western-most portion of the Massachusetts WEA, beginning approximately 12 miles due south of Martha's Vineyard. The project name is Bay State Wind.

A description of the BOEM lease process, lease areas and maps can be found at the BOEM website: <http://www.boem.gov/Atlantic-Fishing-Industry-Communication-and-Engagement>

## Site Assessment and geophysical survey of the Bay State Wind area

For the next three years DONG Energy will collect data and perform detailed assessments of the physical, biological and economic characteristics of the lease area. As the first step of data collection DONG will conduct a geophysical survey in August and September 2016.

## Wind farm would be smaller than Survey Area

The future wind farm will be smaller than the Survey Area, but sited somewhere within its boundaries. The ideal location has yet to be identified.

## Fishermen's knowledge, Fishery Liaison and Fishing Industry Representative

Fishermen in the region will be consulted at several stages of the data collection process. To this end DONG Energy has engaged a Fishery Liaison Officer to work with fishing community leaders. Additionally, an experienced local fisherman will be on the survey vessel for the duration of the survey to ensure daily contact with vessels fishing in the area and to advise the survey captain to avoid gear conflicts. Fishermen will be requested to give wide berth to the survey vessel, but should not otherwise be inconvenienced.

## The importance of fishing

DONG Energy recognizes the importance of this lease area to fishing communities of southern New England and the Mid-Atlantic Bight. To that end, DONG Energy intends to fully consult with fishermen from all associated fishery sectors at every stage of development of the Bay State wind farm.

DONG Energy Contacts	Company	Role	Telephone	Email
John Williamson	FV Sea Keeper	Fisheries Liaison for Bay State Wind	1 (207) 939-7055	john@seakeeper.net
Stephen Welch	FV Mystic	Fishing Industry Representative	1 (781) 422-1084	welchstephen@comcast.net
Jim Neveu	DONG Energy (US)	Environmental Manager	1 (617) 535-7646	janev@dongenergy.com
Gunnar Krusborg	DONG Energy (Denmark)	Site Investigation Project Manager	011 45 99 51 62 95	GUNKR@dongenergy.dk
Malgorzata Zorawinska	DONG Energy (Denmark)	Site Investigation Project Manager	011 45 99 55 94 33	malzo@dongenergy.dk