

NOTICE TO FISHERMEN

Geotechnical survey to start approximately on
October 7, 2016
Estimated duration 15 days (weather permitting)



RV Fugro Synergy

340 ft. Flag: Bahamas

Bridge VSAT phone: 011 31 107 130 581

Vessel satellite phone: 1 713 714 5894

Standing by on VHF channel 16

Geotechnical Survey of the Bay State Wind area

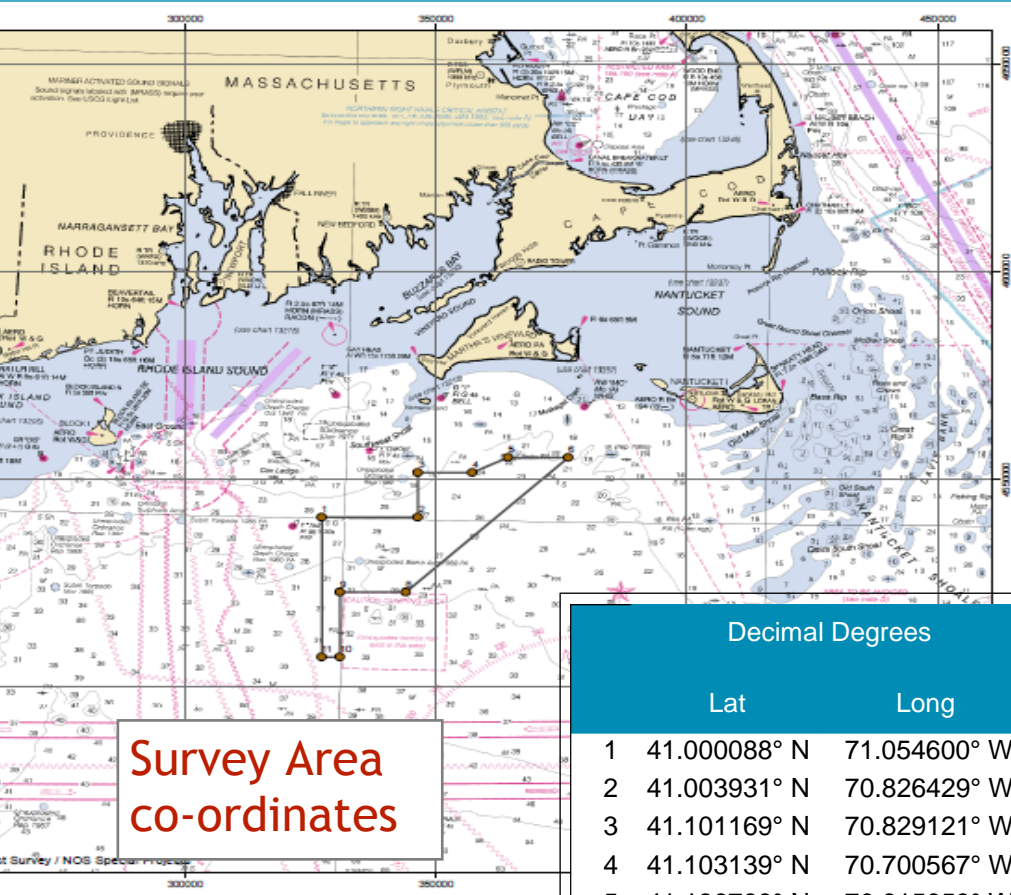
For the next three years DONG Energy will collect data and perform an assessment of the physical, biological and economic characteristics of BOEM lease area OCS-A 0500 south of Martha's Vineyard (see chart) to evaluate the suitability for the construction of an offshore wind farm. In October 2016 DONG Energy will conduct a geotechnical survey involving seabed testing at 18 fixed locations; the survey vessel will remain stationary at each location for approximately 2 to 24 hours at a time using dynamic positioning systems.

Fishermen are requested to provide RV Fugro Synergy a **wide berth of one half-mile**. Passing vessels are requested to reduce speed if possible.

A local Fishing Industry Representative (FIR) will act as the onboard fisheries point of contact advising the vessel master. Fishermen working in the Survey Area are encouraged to call and coordinate activities in order to avoid conflicts.

Steve Welch, FIR, aboard RV Fugro Synergy

Bridge VSAT phone or VHF channel 16



	Decimal Degrees		Degrees, Minutes, Seconds	
	Lat	Long	Lat	Long
1	41.000088° N	71.054600° W	41° 00' 00.32" N	71° 03' 16.56" W
2	41.003931° N	70.826429° W	41° 00' 14.15" N	70° 49' 35.14" W
3	41.101169° N	70.829121° W	41° 06' 04.21" N	70° 49' 44.84" W
4	41.103139° N	70.700567° W	41° 06' 11.30" N	70° 42' 02.04" W
5	41.136789° N	70.615653° W	41° 08' 12.44" N	70° 36' 56.35" W
6	41.138705° N	70.472722° W	41° 08' 19.34" N	70° 28' 21.80" W
7	No point	No point	No point	No point
8	40.841410° N	70.850425° W	40° 50' 29.08" N	70° 51' 01.53" W
9	40.838793° N	71.006912° W	40° 50' 19.65" N	71° 00' 24.88" W
10	40.698345° N	71.002689° W	40° 41' 54.04" N	71° 00' 09.68" W
11	40.697598° N	71.045274° W	40° 41' 51.35" N	71° 02' 42.99" W

In advance of operations please contact:

John Williamson, DONG Energy Fishery Liaison
Cell: 207 939-7055 john@seakeeper.net

Please add your contact information to our file of fishermen in the lease area.
 Fishermen's information is respected as confidential.

