



**Massachusetts  
Lobstermen's Association**

**ANNUAL  
WEEKEND**

**Schedule of Events  
January 22-24, 2016**

Working to  
maintain a  
sustainable  
resource  
in the marine  
ecosystem.



8 Otis Place · Scituate, MA · 02066  
781.545.6984



Individuals can help this  
cause by becoming a  
**Supporting Member.**



For more information, visit our website  
**www.lobstermen.com**

# Massachusetts Lobstermen's Association, Inc.

8 Otis Place ~ Scituate, MA 02066

Bus. (781) 545-6984 Fax. (781) 545-7837



Greetings MLA member and show attendee,

I would like to welcome all of you to the Massachusetts Lobstermen's Association's 2016 Annual Weekend and Tradeshow, at the Seacrest Resort in Falmouth. For 53 years, your Association has been working and protecting the many challenges of being an independent lobster fisherman in the state of Massachusetts. Through our involvement with fisheries managers at all levels of government, we are constantly on alert for any and all issues the might affect our fisheries. This includes the issues of habitat protection, our interaction with the increasing whale population and sustaining the overall health of the lobster resource.

We achieve this through our close working relationship with the Massachusetts Division of Marine Fisheries, Atlantic States Marine Fisheries Commission and the National Marine Fisheries Service. We also strive to keep a close connection with our state and local politicians as well as our federal delegation of Congressmen and U.S. senators.

The Annual Weekend is a nice atmosphere for people to reunite with friends from your industry. Be you a fellow lobsterman or one of the many people that supply you with the tools of your trade or the people that play an intricate part of the future of your industry, we come together to better the future of the lobster industry. I'd like to thank the all of our members, especially the vendors and dealers that show up year after year. Without them, the annual weekend and tradeshow would not be possible.

I am starting my first full year as president of the MLA and, I'm optimistic that we can continue on the path of past MLA Presidents in working toward the betterment of our industry. Along with the MLA's Executive Committee and Area Delegates, you have chosen to represent you, collectively we will strive to confront the complex challenges that the future may hold for us. Our Executive Director and MLA office team, work tirelessly to make the many aspects of the Association become a reality. The day to day operations are truly the heart and soul of what gives us the organized and powerful voice that we carry in the industry today.

Thank you everyone for being an important part of the MLA's Annual Weekend and Trade Show. Now it's time to kick back and enjoy the weekend.

Best regards,

**Arthur "Sooky" Sawyer**

President, Massachusetts Lobstermen's Association

# Annual Weekend and Trade Show Schedule of Events 2016

## Thursday January 21, 2016

8:00AM - 5:00PM	<i>Nauset Center</i> .....Exhibitor Setup
8:00AM - 5:00PM	<i>Nauset Foyer</i> .....MLA Booth
11:30AM - 2:30PM	<i>Nauset Center</i> .....Exhibitor Lunch
8:00PM -10:00PM	<i>Highland</i> .....Hospitality Room

## Friday January 22, 2016

9:00AM 5:00PM	<i>Nauset Center</i> .....Exhibits
9:00AM 5:00PM	<i>Nauset II</i> .....Super Silent Auction
9:00AM 5:00PM	<i>Nauset Foyer</i> .....MLA Booth
9:15AM 12:00PM	<i>Chatham</i> .....Seminars
10:00AM 4:00PM	<i>Monomoy</i> .....Health Care Enrollments
10:00AM 4:00PM	<i>Guestroom</i> .....Hearing Screenings
10:00AM 5:00PM	<i>Race Point</i> .....Seminars
11:00AM 12:00PM	<i>Ocean View Room</i> ...Cooking Demonstration
1:00PM 2:00PM	<i>Chatham</i> .....Seminar
4:30PM 6:00PM	<i>Highland</i> .....Hospitality Room
6:00PM 11:00PM	<i>Guestroom</i> .....Children's Activity
6:15PM 9:00PM	<i>Ocean View Room</i> ...Dinner & Comedian
6:45PM 8:00PM	<i>Shutters</i> .....Buffet Line
9:00PM 12:00AM	<i>Highland</i> .....Hospitality Room
9:00PM 12:00AM	<i>Chatham</i> .....Overflow for Hospitality Room

## Saturday January 23, 2016

8:00AM 5:00PM	<i>Nauset Center</i> .....Exhibits
8:00AM 12:30PM	<i>Nauset II</i> .....Silent Auction
8:00AM 5:00PM	<i>Nauset Foyer</i> .....MLA Booth
9:00AM 5:00PM	<i>Guestroom</i> .....Dental Cleanings
9:30AM 4:00PM	<i>Shutters</i> .....Seminars
10:00AM 1:00PM	<i>Chatham</i> .....Craft Seminar Paint Nite
11:00AM 3:30PM	<i>Race Point</i> .....Seminars
4:30PM 6:00PM	<i>Highland</i> .....Hospitality
6:00PM 11:00PM	<i>Guestroom</i> .....Children's Activity
6:15PM 9:00PM	<i>Ocean View Room</i> ...Dinner
9:00PM 11:00PM	<i>Race Point</i> .....Casino Night
9:00PM 12:00AM	<i>Highland</i> .....Hospitality Room

## Sunday January 24, 2016

8:00AM 10:00AM	<i>Nauset Center</i> .....Exhibits
8:00AM 9:30AM	<i>Indoor Pool</i> .....Immersion Suit Training
8:00AM 10:00AM	<i>Nauset Foyer</i> .....MLA Booth
10:00AM 1:00PM	<i>Nauset Center</i> .....Exhibitor Teardown



# Rose Marine

Gloucester, MASS [www.rosesmarine.com](http://www.rosesmarine.com)



**877-283-3334**

**From Pacer Pumps**



**Hydraulic Driven Pacer Pump with re-designed heavy duty gear motor.**

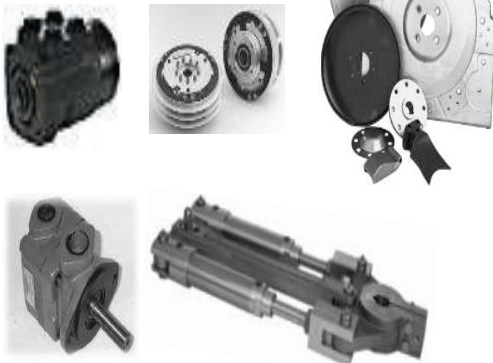
**Eliminates "down-line" resistance with Steering system**

**See Marty at our Booth at the MLA show for this and other great deals!**

**Rose Marine sells and services hydraulic components**



**We will customize a hydraulic hauling or power-steering system with in-stock components to fit your exact needs.**

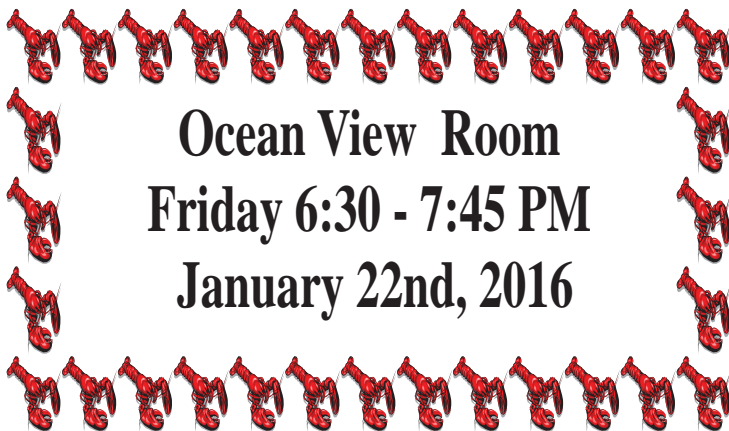


**Aqualoy Stainless Propeller Shafts & Accessories**



**See Marty at the MLA show for a shafting quote**

# Grand Buffet & Comedian



**Ocean View Room**  
**Friday 6:30 - 7:45 PM**  
**January 22nd, 2016**

Do Not miss your chance  
To win one of the cash prizes!  
You must be present to win.



## **Followed by Comedian** **"Juston McKinney"**

8:00 - 9:00 pm

Juston grew up living on the border of New Hampshire and Maine. After earning an associates degree from the very prestigious Southern Maine Community College, he was hired as a deputy Sheriff patrolling the same border in which he grew up. But in 1997 Juston turned in his gun and badge and left the dangerous streets of rural Maine and moved to the quiet community of Queens, New York.

While living in NYC he quickly worked his way into the weekend line-up at Comic Strip Live, Stand-up New York, Dangerfield's, Gotham, and Caroline's on Broadway. Juston would go on to sign sitcom development deals with Warner Brothers, CBS Productions, IFC and Comedy Central.



Don't forget to bring your Pre-paid  
dinner tickets with you.

# MLA GEAR

# NEW T-SHIRTS!

Get your official Mass Lobstermen's  
Assosication T-Shirt at Booth #1 during the  
January 2016 Annual Weekend



"Something's Bruin" Tee  
(Front Chest Graphic)  
**\$20 at Booth #1**



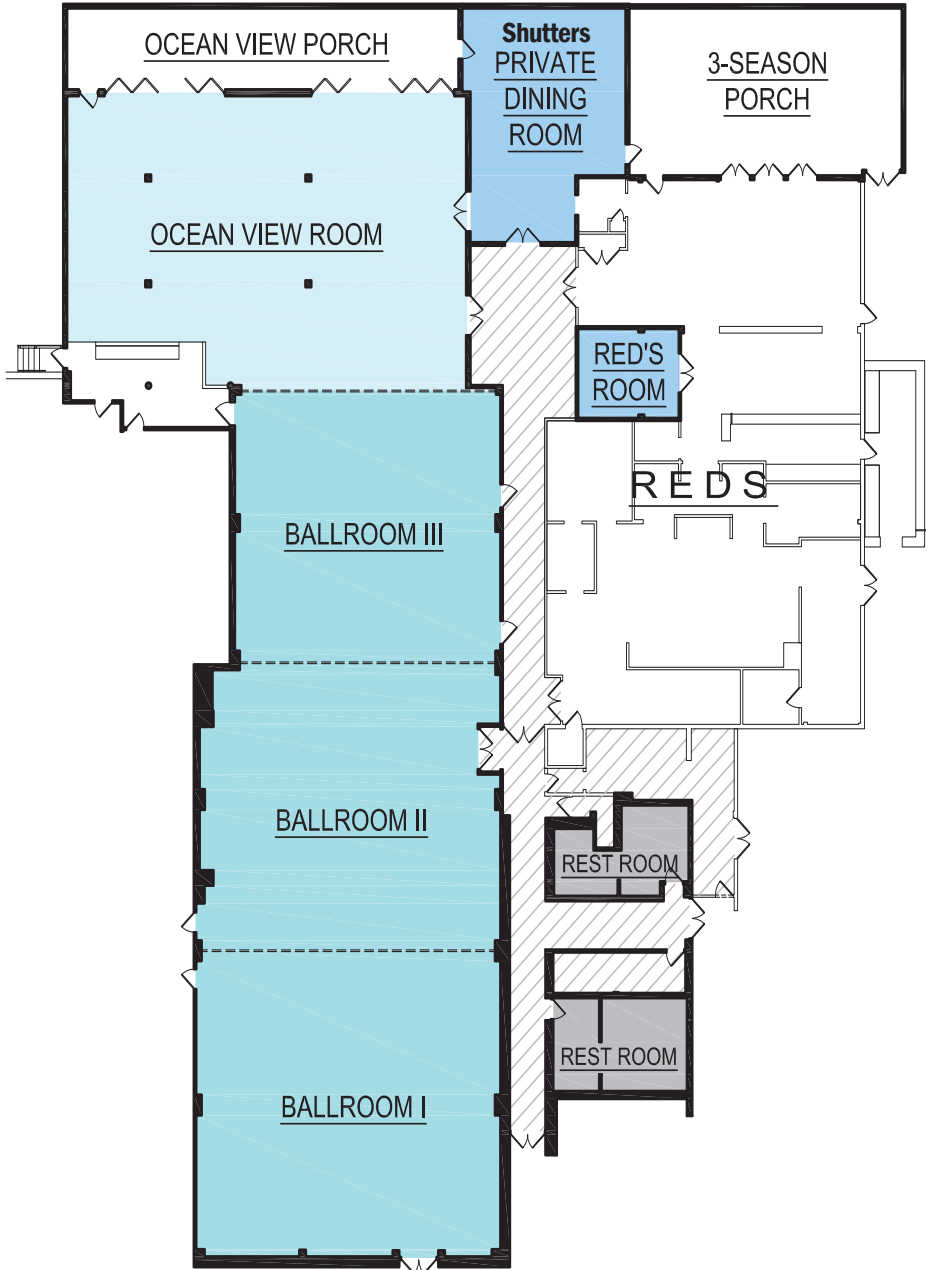
Gray MLA Tee  
(Back & Left Chest Graphic)  
**\$20 at Booth #1**

Blue MLA Tee  
(Back & Left Chest Graphic)  
**\$20 at Booth #1**



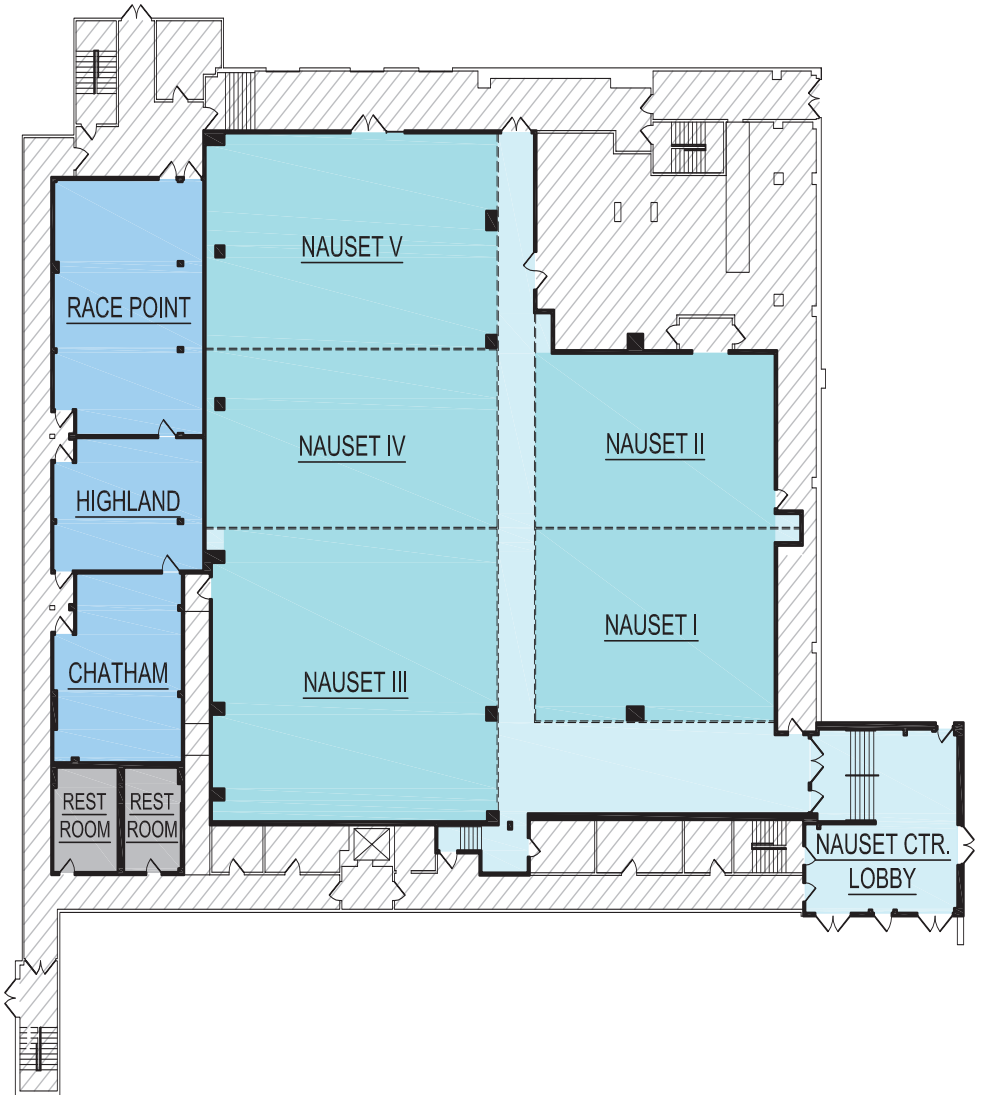
Don't forget to check out our website [www.lobstermen.com](http://www.lobstermen.com)

# Ballroom/Ocean View Floor Plan





# Nauset Center Floor Plan



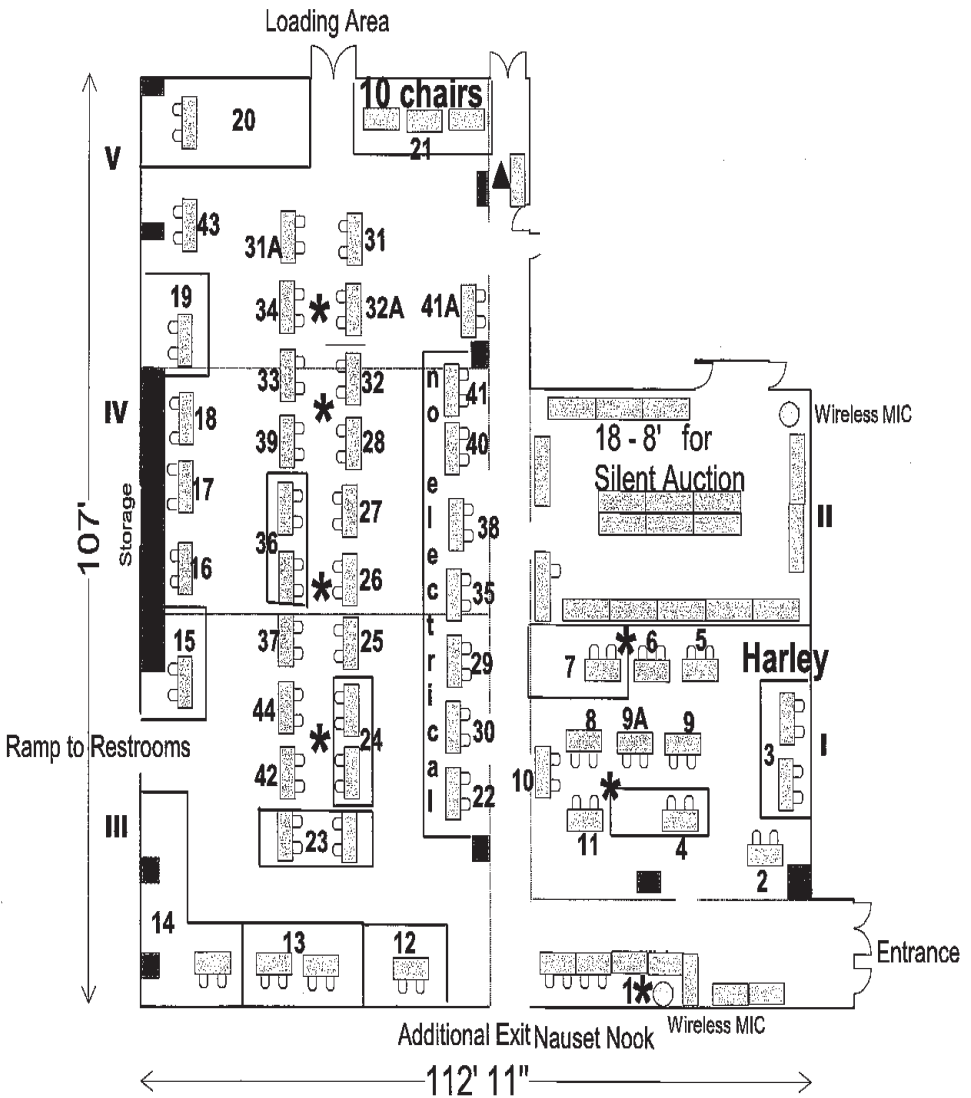
# Exhibitors - 2016

<i>Company Name</i>	<i>Types of Items on Display</i>	<i>Booth Number</i>
Athearn Marine Agency Inc.	Commercial Vessel & Permit Brokerage	31
Atlantic Offshore Lobstermen's Asso	Fishing Association	18
Bell Power Systems	John Deere & Scania Marine Engines	27
Brooks Trap Mill	Lobster Traps & Marine Supplies	14
Caraf Designs	Lobster Art	19
Center for Coastal Studies	Marine Animal Disentanglement	26
Cermalube LLC	Ceramic lubrication	2
Chris Electronics & CLS America	Marine electronics (vms, radars, chart plotters, etc.)	3
Commercial Fisheries News	Newspapers	28
CSH Industries	Sheet Metal Fabricators	32A
Cummins Northeast	Cummins Diesel Engines	23
Division of Marine Fisheries	Fisheries Management	25
East Coast Seafood & Seatrade	Lobster & Scallop sales	31A
First Marine Products	Zincs and Paint	4
Fishing Partnership Support Service	Health Services	21
Friendship Trap Co.	Lobster traps	20
Gfresh	Gfresh promotes a fair, transparent and secure online marketplace.	41A
Gulf of Maine Lobster Foundation	Foundation Lobster Research	30
Hercules SLR	Commercial fishing gear	36
Ketcham Traps	Traps and Gear	10
Lobster Institute	Lobster research	37
Local Colors Gallery	Art Prints of Marine Life	15
M.K. Hoffman	Lubricants	16
Mack Boring & Parts Co.	Diesel Engines	17
Maine Lobstermen's Assoc	Association	43

<i>Company Name</i>	<i>Types of Items on Display</i>	<i>Booth Number</i>
Marine Hydraulics	MFGR Hydro-slave Hydraulic traps lifters power steerers and blocks	11
Mass Lobstermen's Assoc	Industry Association	1
Milton CAT	Cat Marine Engines & Generators	7
Modern Woodmen	Financial Planning	22
Nantucket Shoals Inc.	Environment Cleaning Products	35
NERACCOOS	Ocean and Weather Info	
New England Marine Engineering &	Marine industrial equip	32
New England Propeller	Boat Propellers & Accessories	12
NOAA NE Observer Program	Fishery observer program	44
NOAA Marine Debris Program	Marine Debris Program	
North Atlantic Power	Twin disc controls, electronic controls, clutches and accessories	8
Northeast Trap LLC	Lobster Trap builders	38
Power Products	Volvo Penta Engines & Parts	39
Riverdale Mills	Aquamesh Lobster Trap Wire	40
Rose Marine	Pumps/hydraulics/mufflers/controls/shafting	24
Save Our Sound	An Alliance to Protect Nantucket Sound	9A
Sea Rose Trap Co.	Lobster Traps	5
Shaw Fund for Mariners' Children	Foundation for Mariners Children	34
Stellwagen Bank Nat'l Marine	Government	41
The Northeast Center of Occupation	Fishing Safety	42
Three Lantern Marine	Marine, Fishing supplies, Brooks Trap annex	13
U.S. Coast Guard	Fishing vessel safety	9
Woods Hole Sea Grant	Marine Research, outreach and education	29
Youngs Electronics	Marine Electronics	33

# Vendor Booth Floor Plan

## LOBSTERMAN EXHIBITS 2016



## NAUSET CENTER

**Massachusetts Lobstermen's Association**  
**Silent Auction**  
**is open to everyone**



**Sign up for your bidder # all day Friday & up to 11:45 pm on Saturday in Nauset II**

**Rules Sheet**

**When:** Saturday 12:00 pm sharp till 12:30 pm sharp

Bids will not be accepted after final countdown

**Where:** In Nauset II—located in the exhibit hall

1. YOU **MUST** GET A BIDDERS NUMBER PRIOR TO THE AUCTION  
(NO #'S WILL BE GIVEN OUT ONCE THE AUCTION STARTS)
2. VIEW ALL ITEMS PRIOR TO THE START OF THE AUCTION/FRIDAY & SATURDAY AM
3. YOU **MUST** 18 YEARS OR OLDER TO PARTICIPATE
4. AT THE CONCLUSION OF BIDDING, ALL BIDDERS MUST EXIT THE AREA  
*All active bidders will be entered into free prize drawings during the auction*

**HOW TO BID**

1. BIDDING LASTS ONLY 30 MINUTES—BID QUICK
2. ITEMS ARE PRICED IN INCREMENTS OF \$1.00, \$5.00 & \$10.00 (**NO PARTIAL BIDS**)  
(EXAMPLE—\$1 BIDS HAVE TO INCREASE BY A MINIMUM OF \$1 (NOT \$1.50) \$5 BIDS NOT \$6 AND \$10 BIDS NOT \$14)
1. WRITE YOUR BID # ON THE SHEET FOR THE CORRECT AMOUNT—AN EXAMPLE OF THIS WOULD BE—“LOBSTER TRAP” STARTING BID \$10.00—BID INCREMENTS \$5.00  
YOU WOULD WRITE YOUR NUMBER AND BID - BIDDER# 1963 BID AMOUNT \$15.00  
(OR GREATER-BUT IN INCREMENTS)
4. SOMEONE WILL OUT BID YOU (MAYBE) SO CHECK YOU ITEMS—GO BACK AND BID \$50  
IF YOU REALLY WANT THE ITEM
5. YOU **WILL** BE DISQUALIFIED IF YOU WRITE A BID AFTER THE TIME HAS BEEN CALLED

**THIS IS A FAST AND FURIOUS AUCTION AND LAST YEAR WENT GREAT**

**KEEP CALM AND BID ON**

**SHOULD YOU WIN—CHECK BACK AFTER 1:00 PM—KEEP YOUR BID # WITH YOU**

1. THE WINNING BID WILL BE HIGHLIGHTED
2. BRING ITEM CARD TO THE PAY TABLE
3. AFTER PAYING TO PICK UP YOUR ITEM

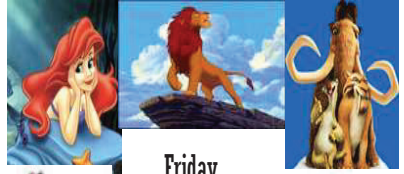
**Method of Payment**

We accept Master Card and Visa, Checks and Cash \*\* Please note that the preferred method of payment is check or cash as the processing fees for credit reduces the scholarship proceeds.

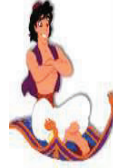
**PAYMENT MUST BE MADE AT THE TIME OF PICK UP**



When: Friday & Saturday  
 Time: 6:00 pm—11:00 pm  
 Where: SUITE 7187



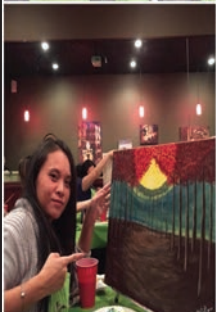
Friday  
&  
Saturday  
night  
movies



Once again, there will be age appropriate activities and movies. Pizza is the food of choice for Friday night and Saturday will be chicken nuggets and French fries along with non-caffeinated beverages and dessert. Do not forget to pre-register your child at the MLA booth. All children MUST be picked up by 11:00 PM. Thank you!

## “PAINT NIGHT”

SATURDAY 10:00 –12:30 ish  
 Chatham room



Come join us for some creative fun at “Paint Night”. It’s time to express your inner van Gogh. Make sure you wear comfortable clothing and please be advised you may get paint on your clothing. Smocks will be available.

There will be a sign up sheet at the MLA booth, 1 per family unless there is room left on Saturday.

Please note this is just a sample of the painting and not the actual painting you will be doing. Have fun!

# Casino Night

Blackjack



roulette

Saturday  
Night

Money Wheel

Race Point

9:00pm-11:00pm

Over & Under

50-50 Raffle



Pot'O Gold

Drawn every 15 minutes



# MLA ANNUAL WEEKEND SEMINAR SCHEDULE – 2016

Room locations for most seminars will be posted at the event

**FRIDAY - JANUARY 22<sup>ND</sup>**

**9 AM to 5 PM**

**Booth #1**

## **Welcome to the 2016 Massachusetts Lobstermen's Association Annual Weekend and Trade Show**

Calling all MLA members to the MLA booth to receive your "GIFT" for being a member in good standing, which means you've paid your dues. If you are not sure if you've paid your dues we can check that for you. Also for being a member in good standing you can enter the MLA member raffle for a cash prize. If you are not yet a member you can JOIN at the show and receive your free GIFT and enter the member raffle.

There are also lots of other raffles for the MLA Scholarship (Snow Blower) and the Legal Defense Fund (Bruins tickets and dinner) – we will be adding lots more items to the raffles. Stop by and check out the NEW MLA clothing too.

**9:15 AM**

**room: Chatham**

## **Come meet your MLA Officers and Director**

Come and meet your MLA President, Arthur "Sooky" Sawyer, f/v Miss Carla, home port Gloucester; MLA Vice President, Bill Lister, f/v Rosie K, home port Barnstable; MLA Vice President, John Carver, f/v Northern Lights, home port Green Harbor, Sec / Tres. Dave Casoni, f/v Margaret M, home port Sandwich and MLA's Executive Director, Beth Casoni, hometown Marshfield. There will be an overview on where the MLA is today and what is on the radar going forward. MLA members we want to hear from you – Come and let us know what else we can be doing to better serve the members of the Association.

**9 AM to 5 PM**

**Booth #20**

## **Fishing Partnership Support Services**

### **FREE Health Insurance Enrollment and Assistance**

Do you still have questions about health insurance for 2016? For insurance to start February 1, you have until January 23 to pick and pay for a plan. Our certified Navigators can help you with the application and to pick the plan that's best for you. If you already have insurance through the Health Connector or MassHealth, we can help you renew or make updates to your account. Stop by the FPSS booth and talk with one of our certified Navigators for more information.



# MLA ANNUAL WEEKEND SEMINAR SCHEDULE – 2016

Room locations for most seminars will be posted at the event

FRIDAY - JANUARY 22<sup>ND</sup>

**10:00 AM**

**room: Racepoint**

## **Real-time telemetry of oceanographic data from fishing vessels**

Beginning in May 2015, ocean bottom temperatures have been telemetered to the NOAA lab in Woods Hole from fishing vessels off the New England coast. The completely-automated system has been developed and tested on a dozen Study Fleet trawlers but can now be installed on lobster boats as well. The components currently include a wireless temperature sensor that automatically sends data to a wheelhouse computer whenever the gear is hauled on deck. The computer then processes the data and relays the temperature, depth, and position information to a satellite via a small transmitter mounted above the wheelhouse. The system will be described, equipment demonstrated, and a sign-up sheet will be available for anyone who is interested in participating in this new phase of eMOLT.

**10 AM to 4 PM**

**Booth #20**

## **Fishing Partnership Support Services**

### **FREE Vaccinations and Health Screenings**

The VNA of Cape Cod will be offering FREE flu, tetanus, and pneumonia shots, as well as screening for blood pressure, cholesterol, and glucose levels.

**10:30 AM**

**room: Chatham**

## **Plan for Life – Building Financial Security for a Lifetime**

Financial planning is not for you? Don't need to worry about it? You think it is only for the ultra-wealthy? Wrong! Everyone needs a plan! With the help of financial planning, you can achieve all of your life goals and dreams. John Barnes, Certified Financial Planner™ Professional, will discuss how to avoid the top financial planning mistakes and ways to maximize your financial situation for both now and your future. Bring your questions and walk away with strategies that you can implement today.

# MLA ANNUAL WEEKEND SEMINAR SCHEDULE – 2016

Room locations for most seminars will be posted at the event

FRIDAY - JANUARY 22<sup>ND</sup>

**10 AM to 4 PM**

**Room 700**

***Fishing Partnership Support Services***

**FREE Hearing Screenings**

Mass Audiology will conduct FREE hearing tests. The screening tests take approximately 10 minutes and include an ear canal checkup, hearing test with an audiometer, and for those with hearing aids, a checkup and battery change, if needed. Stop by the FPSS booth for more information

**11:00 AM**

***Ocean View dining room***

**Cooking Demo**

Come see and taste what the Sea Crests Master Chef will create for you this year. This year he will create a seafood dish that is sure to please the taste buds. You can't miss this so get there early and get ready to be dazzled.

**11:30 PM**

***room: Racepoint***

**MA. Coastal Zone Management  
& the Bureau of Ocean and Energy Management**

The Bruce Carlisle from the Massachusetts Office of Coastal Zone Management (CZM) and Brian Hooker from the federal Bureau of Ocean and Energy Management (BOEM) will collectively talk about the progress of the wind projects slated for Massachusetts and the status of the Block Island project in Rhode Island.

BOEM will present the preliminary results and status of studies of interest to fishermen in Southern New England and give a brief update on the status of leases in Southern New England/New York Bight. BOEM has several complete and ongoing studies to begin addressing concerns raised by fishermen in relation to impacts of offshore wind energy development. BOEM will share the results of a study by the Commercial Fisheries Research Foundation regarding fishery resource baseline studies and post construction monitoring protocols, preliminary results of a lobster ventless trap study south of Cox Ledge, preliminary results of the Real-time Opportunity for the Development of Environmental Observations, and the status of a study evaluating the impacts of electromagnetic fields to fish, including lobster, in Long Island Sound.

# MLA ANNUAL WEEKEND SEMINAR SCHEDULE – 2016

Room locations for most seminars will be posted at the event

**FRIDAY - JANUARY 22<sup>ND</sup>**

CZM works with other state agencies, federal agencies, local governments, academic institutions, nonprofit groups, and the general public to promote sound management of the Massachusetts coast. Come learn more about wind farms sites, potential sand mining sites and much more.

**1:00 – 2:00 PM**

**room: Chatham**

## **S.O.S Save Our Sound**

Audra Parker, President and CEO of the Alliance to Protect Nantucket Sound, will provide an update on the status of the long fight to stop Cape Wind, an offshore wind project proposed to be built on Horseshoe Shoals in Nantucket Sound. Cape Wind suffered a major setback in early 2015 when the developer lost contracts to sell power to Massachusetts utilities. However, Cape Wind still poses a significant threat since they hold a long term lease to 46 square miles of the Sound and the rights to build the project through the year 2041. This lease must be revoked to permanently stop Cape Wind.

**2:00 PM**

**room: Racepoint**

## **The New England Aquarium & Whale Research**

Researchers from the New England Aquarium and the Center for Coastal Studies will present new information about whale entanglements carried out under the auspices of the Consortium for Wildlife Bycatch Reduction. Their work is providing new insights into how whales interact with fishing gear and they are investigating ways to improve the outcomes of whale entanglements should they occur. Come learn about their studies about the impacts of entanglements on right whales, analysis of ropes from entangled large whales, the strains placed on rope during fishing, what colors right whales can see, ropeless fishing technology, and a virtual whale entanglement simulator.

**4:00 PM**

**room: Racepoint**

## **Decompress in the Bait Shed**

Come listen to Brian Robbins, CFN's columnist invites you for a session of tunes and storytelling. Take a break, have some grins and bring a tale of your own.

# MLA ANNUAL WEEKEND SEMINAR SCHEDULE – 2016

Room locations for most seminars will be posted at the event

**6:00 PM – 11:00 PM**

**Suite#7187**

## **Children's Activity**

Once again, there will be age appropriate activities and movies. Cheese Pizza is the food of choice for tonight with non-caffeinated beverages and dessert. All children **MUST** be picked up by 11:00 PM. Sign up at MLA booth. Thank you!

**SATURDAY - JANUARY 23<sup>RD</sup>**

**9 AM to 5 PM**

**Booth #1**

## **Welcome to the 2016 Massachusetts Lobstermen's Association Annual Weekend and Trade Show**

Calling all MLA members to the MLA booth to receive your "GIFT" for being a member in good standing, which means you've paid your dues. If you are not sure if you've paid your dues we can check that for you. Also for being a member in good standing you can enter the MLA member raffle for a cash prize. If you are not yet a member you can JOIN at the show and receive your free GIFT and enter the member raffle.

There are also lots of other raffles for the MLA Scholarship (Snow Blower) and the Legal Defense Fund (Bruins tickets and dinner) – we will be adding lots more items to the raffles. Stop by and check out the NEW MLA clothing too!

**9:30 AM**

**room: Shutters dining room**

## **Looking for a solution to co-exist with whales while fishing**

The President of the South Shore Lobsterman's Association, John Haviland, will be talking about the progress they have made on their gear research over the past year. The commercial lobstermen are using the "best available science" to continue to lobster fish while co-existing with the North Atlantic Right Whale.

**11:00 AM**

**room: Shutters dining room**

## **Are we drowning our lobsters?**

A review of Lobster Institute research on water ingestion during trap hauling. Plus, an update on other Lobster Institute research....and your thoughts on research topics for the future. Given by; Dr. Bob Bayer of the Lobster Institute

# MLA ANNUAL WEEKEND SEMINAR SCHEDULE – 2016

Room locations for most seminars will be posted at the event

**SATURDAY - JANUARY 23<sup>RD</sup>**

**9 AM to 5 PM**

**Booth #20**

***Fishing Partnership Support Services***

**FREE Health Insurance Enrollment and Assistance**

Do you still have questions about health insurance for 2016? For insurance to start February 1, you have until January 23 to pick and pay for a plan. Our certified Navigators can help you with the application and to pick the plan that's best for you. If you already have insurance through the Health Connector or MassHealth, we can help you renew or make updates to your account. Stop by the FPSS booth and talk with one of our certified Navigators for more information.

**9 AM to 5 PM**

**Room 701**

***Fishing Partnership Support Services***

**Dental Cleanings**

Fishing Partnership Support Services has partnered with Visiting Dental Associates of Massachusetts to bring affordable dental cleanings and exams to our members and families at MLA weekend this year! Appointments include a professional cleaning, oral health exam, and fluoride treatment. Cost per person: \$30.00, or FREE if you have MassHealth.

Stop by the FPSS booth for more information.

Please pre-register with Lori at FPSS at 781-635-0011

**10:00 – 1:00**

**room: Chatham**

**Craft Seminar “Paint Nite”**

You'll be using water-based paints that can stain clothing and, although we provide aprons, you should keep this in mind when you're putting your outfit together. Paint Nite can't be held responsible for damaged clothing or personal belongings, so you might want to save that cute new top for another night. We'll start at 10:00 am, so be sure to arrive early enough to get a seat for everyone in your group (we suggest at least 15 minutes early). There will be supplies for 25 people. Please stop by the MLA booth to register. Please note one per family unless there is unfilled space.

# MLA ANNUAL WEEKEND SEMINAR SCHEDULE – 2016

Room locations for most seminars will be posted at the event

**SATURDAY - JANUARY 23<sup>RD</sup>**

**10 AM to 4 PM**

**Booth #20**

**Fishing Partnership Support Services**

**FREE Vaccinations and Health Screenings**

The VNA of Cape Cod will be offering FREE flu, tetanus, and pneumonia shots, as well as screening for blood pressure, cholesterol, and glucose levels.

**11:00 PM**

**room: Racepoint**

**Massachusetts Division of Marine Fisheries**

**Whelk Fishery**

The DMF is hosting a meeting to discuss management issues for the whelk fishery, especially the pot fishery.

**11 AM to 3 PM**

**Fishing Partnership Support Services Booth**

**Please note: This offering is WEATHER DEPENDENT**

**Skin Screenings by Dana Farber**

A Dana Farber Dermatologist will be conducting exams on the Dana Farber Blum Van, their fully equipped mobile health clinic. Additionally, Dana Farber health education specialists will be on hand to answer skin cancer prevention and screening questions. Please stop by the FPSS booth to sign up.

**2:30 – 4:00**

**room: Shutters**

**Fishing Partnership Support Services**

**Women's Workshop**

Please join us in a follow-up session to Fishing Partnership's 2015 Reduce Stress & Create Life Balance workshop held at last year's MLA Annual Weekend.

**12:00 – 12:30**

**Exhibit Hall - Nauset II**

**MLA's "SUPER SILENT" AUCTION**

This auction will be the combination of the silent and LIVE auction to benefit the MLA Scholarship fund. There will be NO LIVE auction on Saturday night. Please plan on attending this, 30 minutes, fast and furious "Super Silent Auction" so you don't miss out on great items that have been generously donated by many MLA supporters and members. Register for your number on Friday and Saturday in Nauset II and view all the items will be on display.

# MLA ANNUAL WEEKEND SEMINAR SCHEDULE – 2016

Room locations for most seminars will be posted at the event

## SATURDAY - JANUARY 23<sup>RD</sup>

**12:30 – 2:00 PM**

**room: Racepoint**

### **Massachusetts Division of Marine Fisheries Public Hearing**

DMF will hold a legal public hearing on recently enacted emergency regulations concerning Jonah and rock crab fisheries, state waters fixed fishing gear rules consistent with the federal large Whale Take Reduction Plan, trap allocation cuts for 2016 and beyond consistent with ASMFC fishery management plan

**2:00 – 3:30 PM**

**room: Racepoint**

### **Massachusetts Division of Marine Fisheries**

#### **& Environmental Police Roundtable**

State officials will be on hand to present new information on lobster stock status, fishery trends, and discuss a variety of other issues of concern to the industry.

**6:00 PM – 11:00 PM**

**Suite#7187**

### **Children's Activity**

Once again, there will be age appropriate activities and movies. Chicken Fingers & French Fries will be served with non-caffeinated beverages and dessert. Children MUST be picked up by 11:00 PM. Please sign up at the MLA booth. Thank you!

## SUNDAY - JANUARY 24<sup>TH</sup>

**8 AM**

**Pool Area**

### **Survival Suit Training**

#### **Basic Safety Training Module**

Stay safe! Get a feel for the upcoming Fishing Partnership Support Services

Spring Safety and Survival training by attending this FREE hands-on immersion suit module. Certified instructors will cover optimum storage locations, proper fit and maintenance, suggested suit attachments, proper donning and water entrance, and effective in-the-water skills, including entering a life raft. Bring your survival suit or one will be provided. Pre register at the FPSS Booth!

Completion of this module will satisfy some requirements of the FPSS Safety and Survival training.



## MASSACHUSETTS LOBSTERMEN'S ASSOCIATION

### FREE RAFFLE

for \$100 dues paying members & members gift

As a member, you have **5 chances** of winning \$200 cash and all you have to do is check in at the MLA booth and get your ticket. You do not

have to be present to win we will notify you after the show. Get your ticket and gift at the MLA booth.

### Scholarship Raffles

In memory of Bob Wheeler & Joe Driebeck



### LOOK AT WHAT YOU CAN WIN

- Snow Blower
- Lobster Oil painting
- Wine Basket
- Lobster Jewelry

*\* There will be more items added at the show*

Stop by the MLA booth for your tickets ~\$5.00 each or 3 for \$10.00

# Sunday Morning Raffle

Rise and Shine for the MLA's Special Raffle. After your coffee make your way down to the Exhibit Hall to pick up your

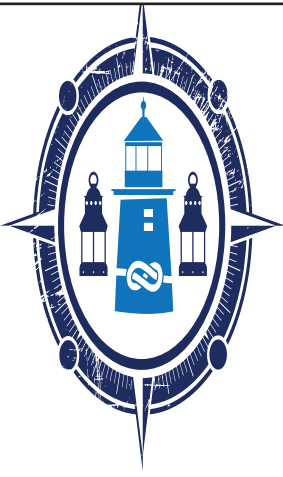
Ticket for a chance to win one of five chances to win a \$100.00.

Tickets will be given out at the MLA booth on Sunday between

8:30am & 9:30am only and drawn at 10:00am

YOU MUST BE PRESENT TO WIN





# THREE LANTERN MARINE & FISHING

Complete Marine & Fishing Supply Co.

[www.threelanternmarine.com](http://www.threelanternmarine.com)

7 Parker Street

Tel: (978) 281-2080

Gloucester, MA 01930

Fax: (978) 515-7284







# MLA Fishermen Services

**MLA Fishermen Services** is dedicated to fishermen in the north east of the USA providing commercial marine insurance through MLA NPBPC Ltd Bermuda.

Serviced by boating experts committed to excellence, there is no more dedicated group looking after your needs. Our friendly and dedicated staff are always eager to help you in any way they can.

## SERVICING OUR FISHING COMMUNITIES WITH

- REASONABLE RATES
- AGREED VALUE HULL COVERAGE
- PROTECTION & INDEMNITY COVERAGE
- EXCESS LIABILITY COVERAGE
- CREW COVERAGE
- BREACH OF WARRANTY COVERAGE
- PORT BUILDERS RISK COVERAGE
- ALTERNATE FISHERIES COVERAGE
- CHARTERING COVERAGE
- SPEEDY RESOLUTIONS



**CALL TODAY**  
**781-545-5073**

**Check out our website**  
**[www.fishermenservices.com](http://www.fishermenservices.com)**

**A Program Serviced by Fishermen for Fishermen.**

## LEGAL DEFENSE FUND RAFFLE

Your chance to win

- Simrad NSS7 7” Chart plotter & fish finder
- Globalstar 1700 Satellite Phone
- Imperial Adult Immersion Suit
- Ladies custom Lobster Jewelry set

To purchase tickets visit the MLA booth  
Tickets are \$5.00 each or 3 for \$10.00



Free Drawing

### Grand Banquet & MLA Awards

Saturday evening

6:30 pm

*"Ocean View Room"*

*Don't forget to bring your Pre-paid dinner tickets with you.*



5 Merry Weekend Getaways at the  
Sea Crest Beach Hotel  
&  
Cash prizes all to be Drawn at the Banquet  
AND You must be present to win.

**We wish to acknowledge and thank those of you who have generously made donations for the Silent Auction and sponsored events at the Annual Weekend.**

**THANK YOU ALL  
VERY MUCH!**

ABC Equipment  
Athearn Marine  
Belinda Doliber  
Bell Power-John Deer  
Beth Casoni  
Bill & Maryann Bartlett  
Brooks Trap Mill  
Cape Air Provincetown  
Cape Seafoods Inc.  
Caraf Design  
Cheryl Souza  
Chris Electronics  
Commercial Fisheries News  
Cummings Northeast  
Cynde Bolcome  
Dave Casoni  
Deepwater Wind  
Doris Forbes  
Fisher Air Fasteners  
Fishermen Services  
Fishing Partnership Support Services  
Friendship Trap Co.  
Fulchino, O'Reilly & Company  
George Machon  
Grundens  
Harbor Light Toy Co.  
Hercules SLR  
Jeff Saunders  
Jim & Pam Bartlett  
Joanne Harding  
Kathy & Tom Eaton  
Ketchum Supply Corp  
Landrigan Corp  
Law Office of Kevin F. Gillis  
Lobster Institute  
Lobster Tales Cruises  
Local Colors Gallery

Louise Tingblad  
M.K. Hoffman  
Maine Lobstermen's Association  
Marc Hoffman  
Marine Hydraulic Engineering Co.  
Maryjane & Mike Malewicki  
Mass Lobstemen's Association  
Mike Bartlett  
Milton Cat  
Mullaney's Fish Mrkt  
N.E. Aquarium  
Nancy Reid  
Navico  
Neptune Inc  
New England Propeller  
Northeast Trap  
Paper Merchant  
Pea Pear  
Plymouth Boat Yard  
Posternak, Blankstein & Lund, LLP  
Power Products  
Rich Cassola  
Riverdale Mills  
Rose Marine  
Sandwich Ship Supply  
Seafood Harvesters of Amercia  
Silent Chef—Scituate Harbor Silver  
& Seaglass Jewelry  
Si-Tex  
Stright-McKay Ltd.  
The Barker Tavern  
The Inn at Scituate Harbor  
The Welch Co.  
Three Lantern Marine  
Tracey Abboud  
Wendy Moran  
Wishbones Pet Boutique & Barkery  
Young's Electronics



**THREE LANTERN  
MARINE & FISHING**  
Complete Marine & Fishing Supply Co.

**Three Lantern Marine Supplies**

7 Parker St  
Gloucester, MA 01930  
978-281-2080  
[www.threelantermarine.com](http://www.threelantermarine.com)

**FULCHINO, O'REILLY & COMPANY<sup>PC</sup>**  
CERTIFIED PUBLIC ACCOUNTANTS

**THOMAS F. O'REILLY, CPA—VICE PRESIDENT**

155 MIDDLESEX TURNPIKE  
BURLINGTON, MA 01803  
781.270.5800

**Posternak**  
POSTERNAK BLANKSTEIN & LUND LLP

**STEVEN MEYER, ESQ.**

800 BOYLSTON ST.  
BOSTON, MA 02199  
617.973.6203



**MLA FISHERMEN SERVICES**

PO Box 592  
SCITUATE, MA 02066  
781.545.5073  
[WWW.FISHERMENSERVICES.COM](http://WWW.FISHERMENSERVICES.COM)



**Brooks Trap Mill & Marine Supplies**

211 Beechwood St  
Thomaston, ME 04861  
1-800-426-4526  
[www.brookstrapmill.com](http://www.brookstrapmill.com)



**LOBSTER FOUNDATION OF MASSACHUSETTS**

8 OTIS PLACE  
SCITUATE, MA 02066  
781-545-6984  
[WWW.LOBSTERFOUNDATIONOFMA.ORG](http://WWW.LOBSTERFOUNDATIONOFMA.ORG)

**Special Sponsors**

THE FOLLOWING HAVE MADE GENEROUS DONATIONS TO  
SPONSOR ONE OR MORE OF THE WEEKEND'S ACTIVITIES OR RAFFLES.  
THEIR GENEROSITY IS MUCH APPRECIATED AND WE THANK THEM VERY MUCH!

# 40 Years. \$5 Billion Annually.

Celebrating its 40th anniversary, the Magnuson-Stevens Act is a landmark piece of legislation that helped U.S. commercial fishermen sustainably harvest 9.5 billion pounds of seafood, worth \$5.4 billion in 2014.\*

Tell your elected officials:

**STAND with what WORKS.**

**STAND with COMMERCIAL FISHERMEN.**

**STAND with the MAGNUSON-STEVENS ACT.**



\*According to the National Marine Fisheries Service (NMFS)



**Marine Electronics for Over 30 Years**  
Sales • Service • Installation

**Chris Electronics is a factory authorized servicing dealer for these and many more manufacturers:**

BOATRACS®

FLIR

FURUNO

Globalstar

ICOM

JRC

KONGSBERG

K/M/HI®

MAXSEA

NOBELTEC®  
by Jeppesen

Raymarine®

Sea Tel  
COBHAM

SIMRAD

SITEX

255 MacArthur Drive • New Bedford, MA 02740  
Phone: 508-994-8257 • [www.chriselectronics.net](http://www.chriselectronics.net)



**Please stop by our booth to see  
the new composite runner!**

**Stock and Custom-Built Traps  
Lobster and Specialty Traps  
Aquaculture Supplies  
Huge Commercial Fishing Supply Inventory  
Four Locations in Maine**



**BROOKSTRAPMILL.COM  
(800) 426-4526**